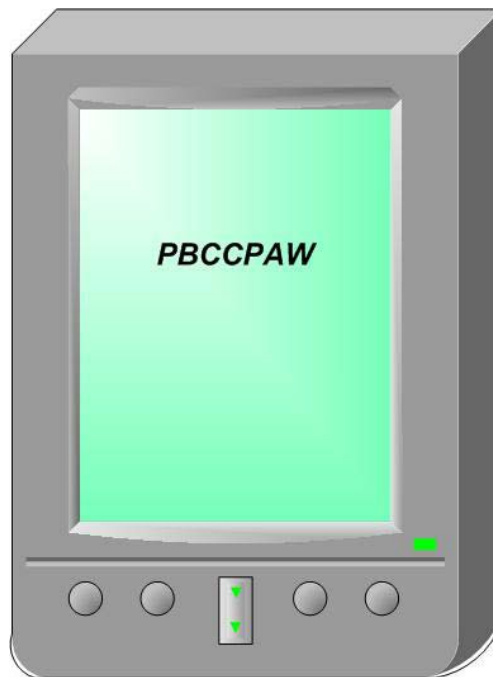


Palm Beach Community College Wireless System

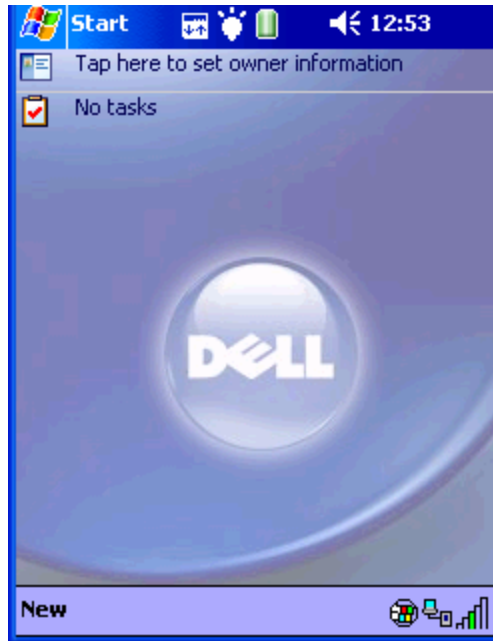
PDA Setup Guide



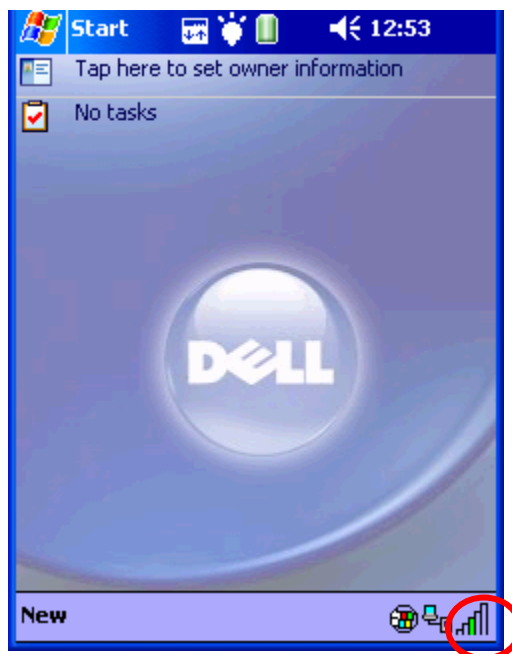
The following instructions are for use on a handheld computer running Microsoft Pocket PC 2002.

- Preliminary -

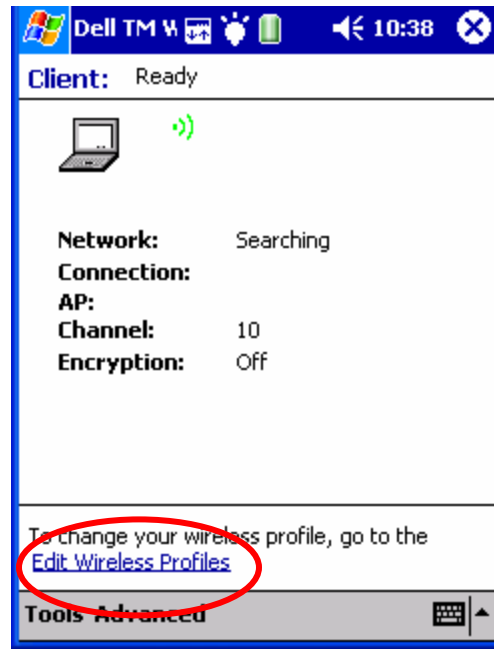
Step 1: The first step is to setup a wireless profile. The profile will identify and store all the necessary settings for the **PBCCPAW** wireless network. If the PDA is not already on, turn on the PDA and navigate to the main desktop screen.



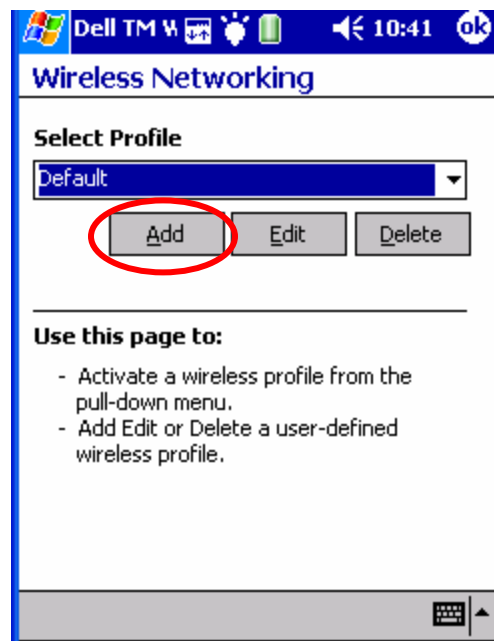
Step 2: On the Pocket PC desktop, tap on the bars located on the lower-right side of the screen.



Step 3: Tap on the hyperlink [Edit Wireless Profiles](#) located on the lower left-side of the screen to add a profile.

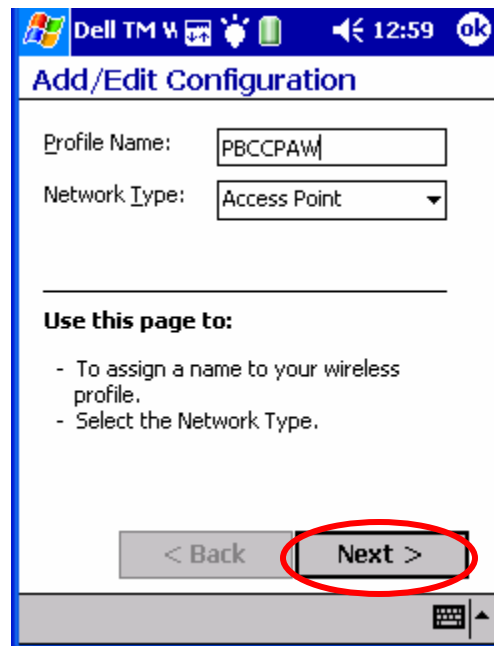


Step 4: The wireless networking screen should appear. In the Select Profile drop down list The “Default” profile should appear. Tap on the **Add** button to create a new profile.

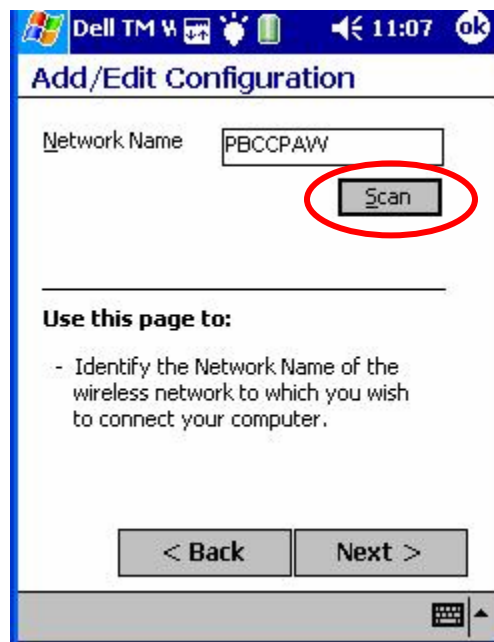


Step 5: In the **Profile Name** box, type “PBCCPAW” (without the quotes) and verify that the **Network Type** is set to Access Point. Tap **Next**.

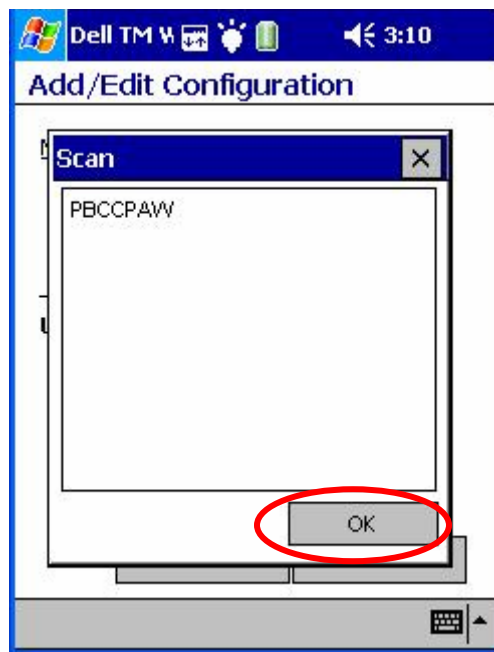
Note: The Handheld must be in an area that currently has PBCCPAW network access installed for this step to work.



Step 6: Now you should be prompted for a Network Name. Do not enter a name. Instead, tap the **Scan** button and a window should pop up listing “PBCCPAW”.

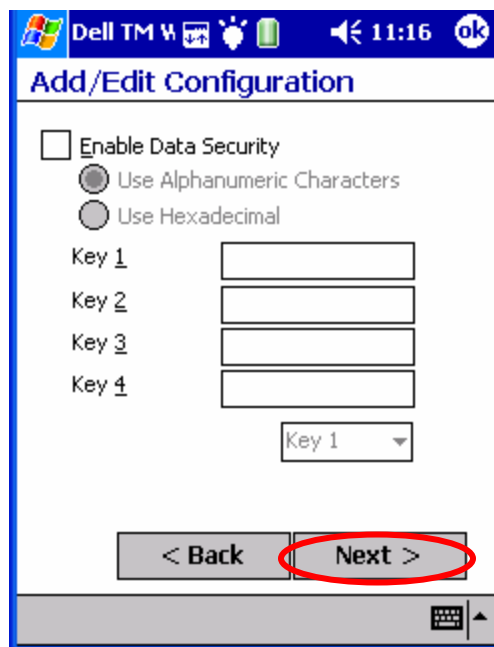


Step 7: Within the Scan windows select PBCCPAW and tap **OK**.

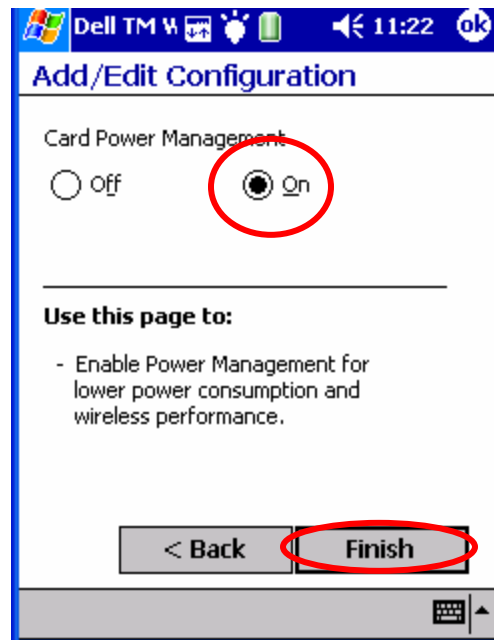


Note: The Handheld must be in an area that currently has PBCCPAW network access installed for this step to work.

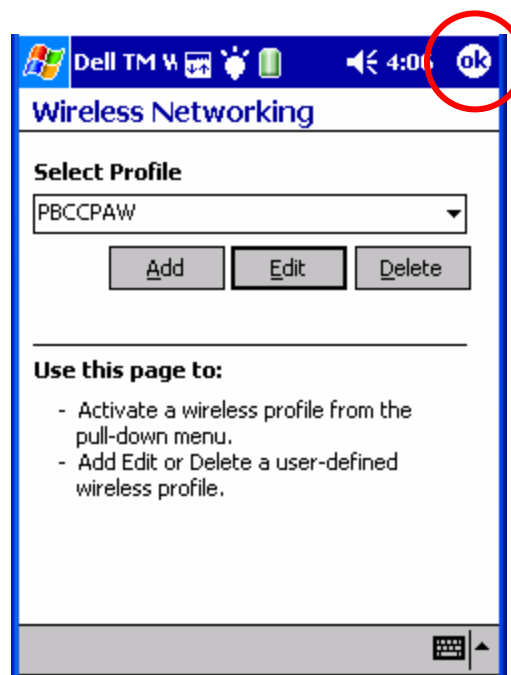
Step 8: Verify that all boxes and fields are blank. Tap **Next** to go to the next screen.



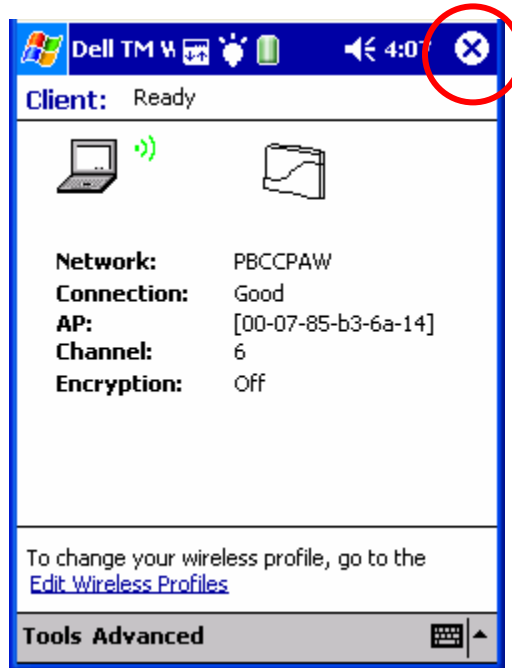
Step 9: Select **On** for Card Power Management then tap on **Finish**.



Step 9: Tap **OK** to accept the profile.



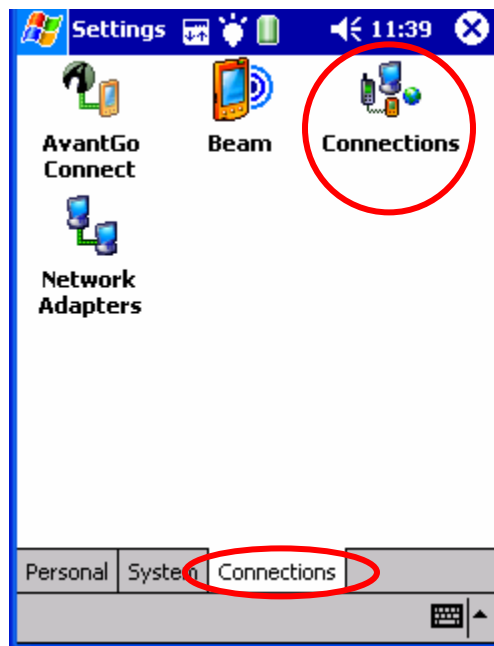
Step 10: Tap **OK** to exit the Client screen. Your PDA is now ready to access the Internet.



Step 11: In order to access the Internet another setting has to be edited. Tap on the **Start Menu** then tap on **Settings**.



Step 12: Tap on the **Connections** tab, then tap on the **Connection** icon.



Step 13: **Connections** tab verify that “**The Internet**” option is selected for **My network card connects to:** located at the bottom of the screen then tap **OK** and exit all opened windows.



Step 14: You're done! Check to make sure that everything is working. If you have not done so, go to the main screen of your Handheld. Select the **Internet Explorer** icon under the **Start Menu**.



The initial PBCC PantherLink Access Wireless should appear requesting a **Login ID**, **Password / PIN** and an **accept terms of service** checkbox.

PBCC Wireless Login

Login ID

Password / PIN

[I accept terms of service](#)

Login

- Enter a your student ID number
- Enter your assigned password or PIN
- Click on the **I accept terms of service** link to read the terms of agreement. If you accept to the terms, enter a check by clicking into the checkbox
- Click **Login** to continue.

Step 15: To verify that you are able to browse the Web, go to PBCC's website (www.pbcc.edu). Your screen should look similar to the one below. If this does not work, please go back and check your settings covered by these instructions and try again.

