



Accountability Report Trends 2004-2008

Comparing PBCC Performance to the State Benchmarks

Academic Affairs

May 2009

TABLE OF CONTENTS

	Page
Introduction	2
Description of Measures	2
Definitions	4
 Analysis of Each Measure	 6
 Conclusion	 8
 Appendix - Tables and Graphs	
Figure 1 – Measure 1, Part 1	9
Figure 2 – Measure 1, Part 2 AA Retention	10
Figure 3 – Measure 1, Part 2 AA Success	11
Figure 4 – Measure 1, Part 2 AS Retention	12
Figure 5 – Measure 1, Part 2 AS Success	13
Figure 6 – Measure 1, Part 2 PVCS Retention	14
Figure 7 – Measure 1, Part 2 PVCS Success	15
Figure 8 – Measure 2 Mean GPA	16
Figure 9 – Measure 2 GPA Above 2.5	17
Figure 10 – Measure 3, Part 1	18
Figure 11 – Measure 3, Part 2 Placement Rates for Completers	19
Figure 12 – Measure 3, Part 2 Placement Rates for Leavers	20
Figure 13 – Measure 4, Part 1 Failed Entry-Level Test	21
Figure 14 – Measure 4, Part 1 Passed Highest Level College Prep Read	22
Figure 15 – Measure 4, Part 1 Passed Highest Level College Prep Write	23
Figure 16 – Measure 4, Part 1 Passed Highest Level College Prep Math	24
Figure 17 – Measure 4, Part 2 AA College Prep Retention Rate	25
Figure 18 – Measure 4, Part 2 AA College Prep Success Rate	26
Figure 19 – Measure 4, Part 2 AS College Prep Retention Rate	27
Figure 20 – Measure 4, Part 2 AS College Prep Success Rate	28
Figure 21 – Measure 4, Part 2 PSVC College Prep Retention Rate	29
Figure 22 – Measure 4, Part 2 PSVC College Prep Success Rate	30
Figure 23 – Measure 5 Comparison of CLAST for Essay	31
Figure 24 – Measure 5 Comparison of CLAST for Math	32
Figure 25 – Measure 5 Comparison of CLAST for Reading	33
Figure 26 – Measure 5 Comparison of CLAST for English	34
Figure 27 – Measure 5 Comparison of CLAST for All Subtests	35

INTRODUCTION

The Accountability Report was enacted by the Florida Legislature in 1993 as the State of Florida moved toward measuring performance and outcomes in instructional programs. The purpose of the Accountability Report is to assess the improvement and quality of the instructional and administrative efficiency of the Florida Community College System. This report is a key element in PBCC's institutional effectiveness assessment process.

The following measures were developed by the legislature to assess accountability.

Description of Measures

1. **Measure 1 Part 1: Prior Year High School Graduates Enrolled the Following Year Enrollment Report** - This report shows the number and percent of high school graduates the College enrolls from the previous year in its service area.
2. **Measure 1 Part 2: Enrollment, Retention, and Success Report for Associate in Arts (A.A.), Associate in Science (A.S.), and Postsecondary Vocational Certificate (PSVC) Students** - This report presents the retention and success rates of first-time-in-college A.A. and A.S. degree seeking students and PSVC seeking students.
3. **Measure 2: Associate in Arts Degree Transfer Performance Report** - This report indicates the performance of A.A. students after they have transferred to a Florida State University.
4. **Measure 3 Part 1: State Licensure Passing Rate Report** - This report shows the number and percentage of students passed for each appropriate vocational program licensure exam.
5. **Measure 3 Part 2: Vocational Placement Rates of Associate in Science and Certificate Program Completers and Leavers** - This report displays the number and percentage of students who completed and were placed into an occupation related to their instruction, and also the number and percentage of students who left and were placed into an occupation related to their instruction.
6. **Measure 4 Part 1: College Preparatory Success Rate Report** - This report presents the number and percent of first-time- in-college students who failed some portions of their entrance exam, how many of those enrolled in the college preparatory classes, and the number and percent of those who passed the highest level college preparatory courses.

- 7. Measure 4 Part 2: College Preparatory Enrollment, Retention and Success Report for Associate in Arts, Associate in Science, and Postsecondary Vocational Certificate Students** - This report shows retention and success rates of first-time- in-college A.A. and A.S. degree seeking students and PSVC seeking students, who have completed all college preparatory requirements.

- 8. Measure 5: CLAST Performance Report** - This reports shows the passing number and percent of students who attempted the CLAST or had a CLAST alternative for each CLAST subtest and for all subtests combined.

Definitions

Prior Year High School Graduates Enrolled the Following Year - the number and percent of previous year high school graduates that the College enrolls from in its service district's high schools.

Associate in Arts Degree Transfer Performance - the performance of A.A. students after they have transferred to a Florida state university.

State Licensure Passing Rate - the number and percentage of students passed for each appropriate vocational program licensure exam.

Vocational Placement Rates of Associate in Science and Certificate Program Completers and Leavers - number and percentage of students who completed and were placed into an occupation related to their instruction, and also the number and percentage of students who left and were placed into an occupation related to their instruction.

College Preparatory Enrollment, Retention and Success for Associate in Arts, Associate in Science, and Postsecondary Vocational Certificate Students - retention and success rates of first- time- in- college A.A. and A.S. degree seeking students and PSVC seeking students, who have completed all college preparatory requirements.

College Preparatory Success Rate - the number and percent of first- time- in- college students who failed some portions of their entrance exam, how many of those enrolled in the college preparatory classes, and the number and percent of those who passed the highest level college preparatory courses.

CLAST Performance - the passing number and percent of students who attempted the CLAST or had a CLAST alternative for each CLAST subtest, and for all subtests combined.

Source: Cohort population includes first-time-in-college (FTIC) students from the beginning of the tracking period who took an entry level test, achieved 18 credit hours (A.A. and A.S) or 9 credit hours (PSVC) by the end of the tracking period and were seeking A.A., A.S. and PSVC.

Number Graduated: Of the cohort, the number who graduated

Number Enrolled in Good Academic Standing: Of the cohort, excluding the Number Graduated, the number of students still enrolled at the institution during the following terms with a GPA at or above 2.0.

Number Enrolled Not in Good Academic Standing: Of the cohort, excluding the Number Graduated, the number of students still enrolled at the institution during the terms, with a GPA below 2.0

Number who Left in Good Academic Standing: Of the cohort, excluding the number Graduated, the number of students who were not enrolled at the institution during the terms, that had a GPA at or above 2.0

Retention Rate = (# Graduated + Enrolled in good Standing + #Enrolled Not in Good Standing) / Total Cohort

Success Rate = (# Graduated + Enrolled in Good Standing + #Left in Good Standing) / Total Cohort

ANALYSIS OF EACH MEASURE

1. Measure 1, Part 1 - Prior Year High School Graduates Enrolled the Following Year Enrollment Report

- Palm Beach Community College enrolled 27.71% of the prior year high school graduates in its service district. This percentage is lower than the enrollment averages for the Florida Community College System and the five-year trend shows a small decline over time (Figure 1, page 9).

2. Measure 1, Part 2 - Enrollment, Retention, and Success Report for Associate in Arts, Associate in Science, and Postsecondary Vocational Certificate Students.

- **Associate in Arts students:** Palm Beach Community College attained a 66.49% retention rate and a 88.72% success rate for associate in arts students in the current report. The five-year trend in retention and success rates indicate that the College consistently exceeds or equals the Florida Community College System averages (Figures 2 – 3, pages 10, 11).
- **Total Associate in Science students:** Palm Beach Community College achieved a 63.29% retention rate for associate in science students and a 87.44% success rate. The five-year trends consistently exceeded the average rates of retention and success for the Florida Community College System. (Figures 4 – 5, pages 12, 13).
- **Total Postsecondary Vocational Certificate students:** Palm Beach Community College achieved a 91.80% retention rate and a 90.16% success rate. Although these rates represent a decline over the prior year, they are higher than the Florida Community College System averages (Figures 6 – 7, pages 14, 15).

3. Measure 2 - Associate in Arts Degree Transfer Performance Report

- The average GPA obtained by Palm Beach Community College Associate in Arts transfer students in the State University System was 2.91; this average GPA is similar to the Florida Community College System average of 2.95. Additionally, 74.36% of AA transfer students achieved a GPA at or above 2.50, a percentage that is slightly below the Florida Community College System average in the five-year trend comparison (Figure 8 - 9, pages 16, 17).

4. Measure 3 Part 1 - State Licensure Passing Rate Report

- The data for this section of the report has not been distributed by the state of Florida since 2000 (Figure 10, page 18).

5. Measure 3 Part 2: Vocational Placement Rates of Associate in Science and Certificate Program Completers and Leavers

- Palm Beach Community College completers achieved an 87.08% placement rate while PBCC leavers attained a 75.80% placement rate. The five-year trend on these measures shows considerable variability due to accounting changes; thus, trends should be interpreted cautiously. The College's placement rate for completers increased, while the placement rate for leavers decreased from the prior year; both rates are slightly below the Florida Community College system averages (Figures 11 – 12, pages 19, 20).

6. Measure 4 Part 1 - College Preparatory Success Rate Report

- **FTIC Students Failed Any Entry-Level Test:** Of Palm Beach Community College's FTIC students, 69.69% placed in college preparatory studies. This percentage is slightly lower than the prior year, but remains higher than the Florida Community College System average (Figure 13, page 21).
- **Percent Passed Highest level for College Preparatory Reading:** Palm Beach Community College achieved a passing rate of 67.49%, a percent that is slightly lower than last year and remains somewhat below the Florida Community College System average (Figure 14, page 22).
- **Percent Passed Highest Level for College Preparatory Writing:** Palm Beach Community College achieved a passing rate of 66.85%, which is somewhat higher than the prior year and higher than the Florida Community College System average (Figure 15, page 23).
- **Percent Passed Highest Level for College Preparatory Math:** Palm Beach Community College achieved a passing rate of 56.75%, which represents an improvement from last year and is higher than the Florida Community College System average (Figure 16, page 24).

7. Measure 4 Part 2 - College Preparatory Enrollment, Retention and Success Report for Associate in Arts, Associate in Science, and Postsecondary Vocational Certificate Students

- **Total Associate in Arts students:** Palm Beach Community College's retention rate (68.62%) and success rate (88.11%) both exceeded the Florida Community College System average (Figures 17 – 18, pages 25, 26).

- **Total Associate in Science students:** Palm Beach Community College outperformed the Florida Community College System in both retention (65.52%) and success rates (91.95%) in this year's report (Figures 19 – 20, pages 27, 28).
- **Total Postsecondary Vocational Certificate students:** Due to the small number of students in postsecondary vocational certificate programs included in the accountability report study, the retention and success rates of the College fluctuate substantially. In this year's report, the PBCC retention rate was 100.00% and the success rate was 100.00% (Figures 21 – 22, pages 29, 30).

8. Measure 5 - CLAST Performance Report

- Results include students who attempted the CLAST or had a CLAST alternative. The performance of Palm Beach Community College in passing each of the four subtests and all four subtests combined was similar to the Florida Community College System average. The passing rate for individual subtests ranged from 98.11% to 98.80% and all four tests combined was 96.09% (Figures 23 – 27, pages 31-35).

CONCLUSION

Palm Beach Community College continues its excellent results on the accountability measures as established by the State of Florida. Throughout these measures, student performance while at PBCC continues to reach high levels of performance. This high level of performance carries through as students enter the state university system as evidenced by their GPA once they attain junior status. In addition, our high placement rates in career programs indicate that our students are able to enter their chosen profession once they complete a career program at PBCC. A possible area of improvement is to enroll a higher percentage of the county's prior high school graduates.

Figure 1
Accountability Outcome Measure 1 Part 1
Comparison of Prior Year High School Enrolled the Following Year between
PBCC and Florida System
Enrollment Report - Total Students (2004-2008)

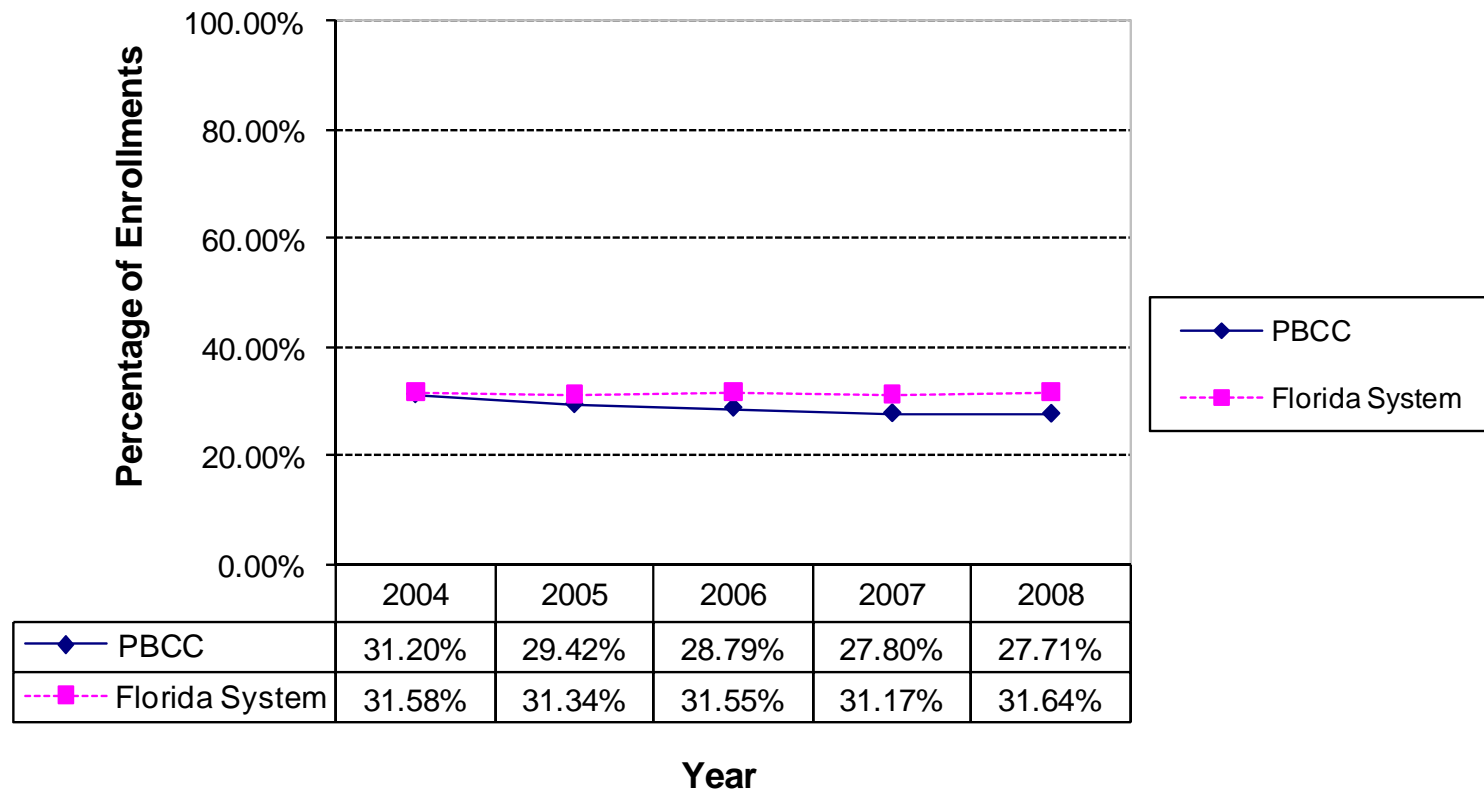


Figure 2
Accountability Outcome Measure 1 Part 2
Comparison of Retention Rate Report for Total
Associate in Arts Students between PBCC and Florida System
Total Students (2004-2008)

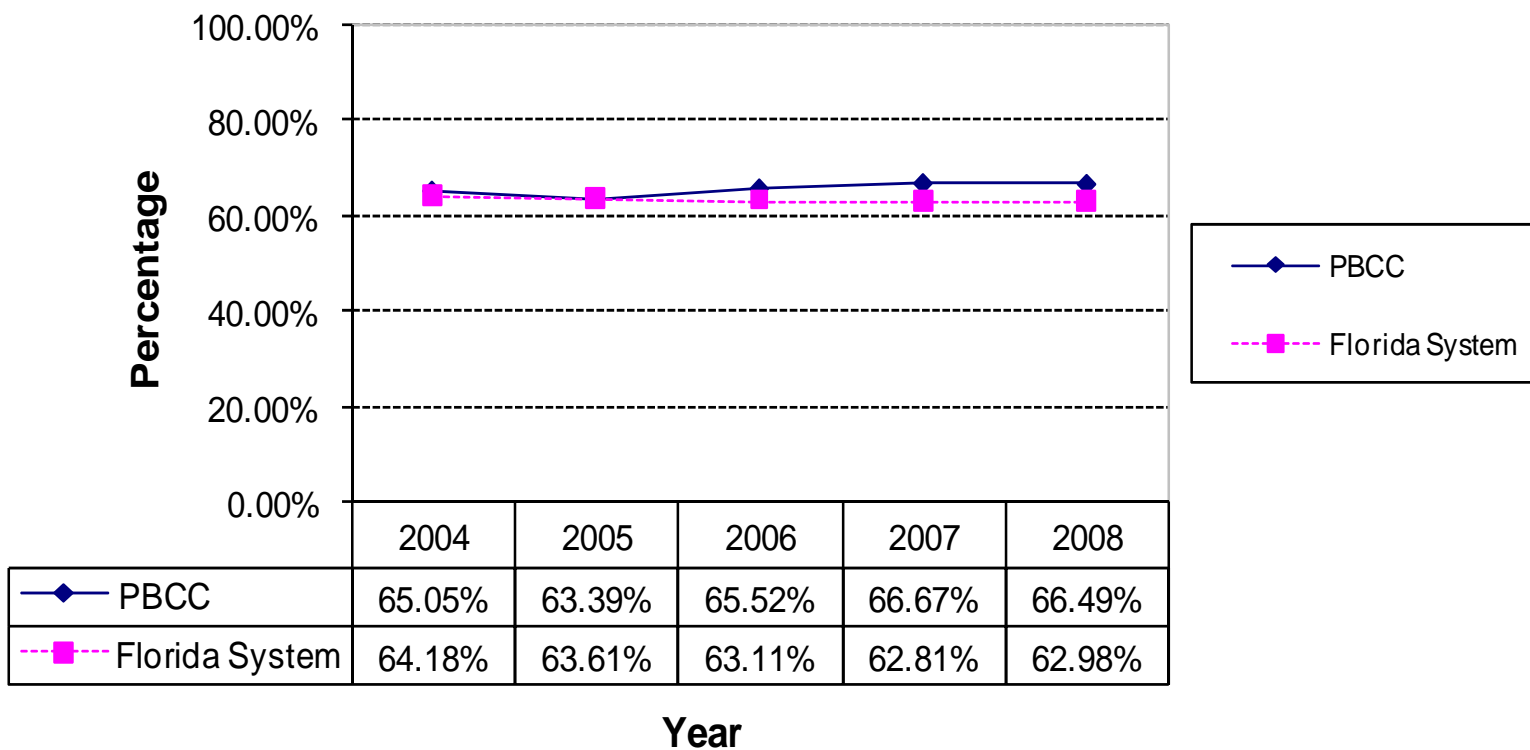


Figure 3
Accountability Outcome Measure 1 Part 2
Comparison of Success Rate Report for Total
Associate in Arts Students between PBCC and Florida System
Total Students (2004-2008)

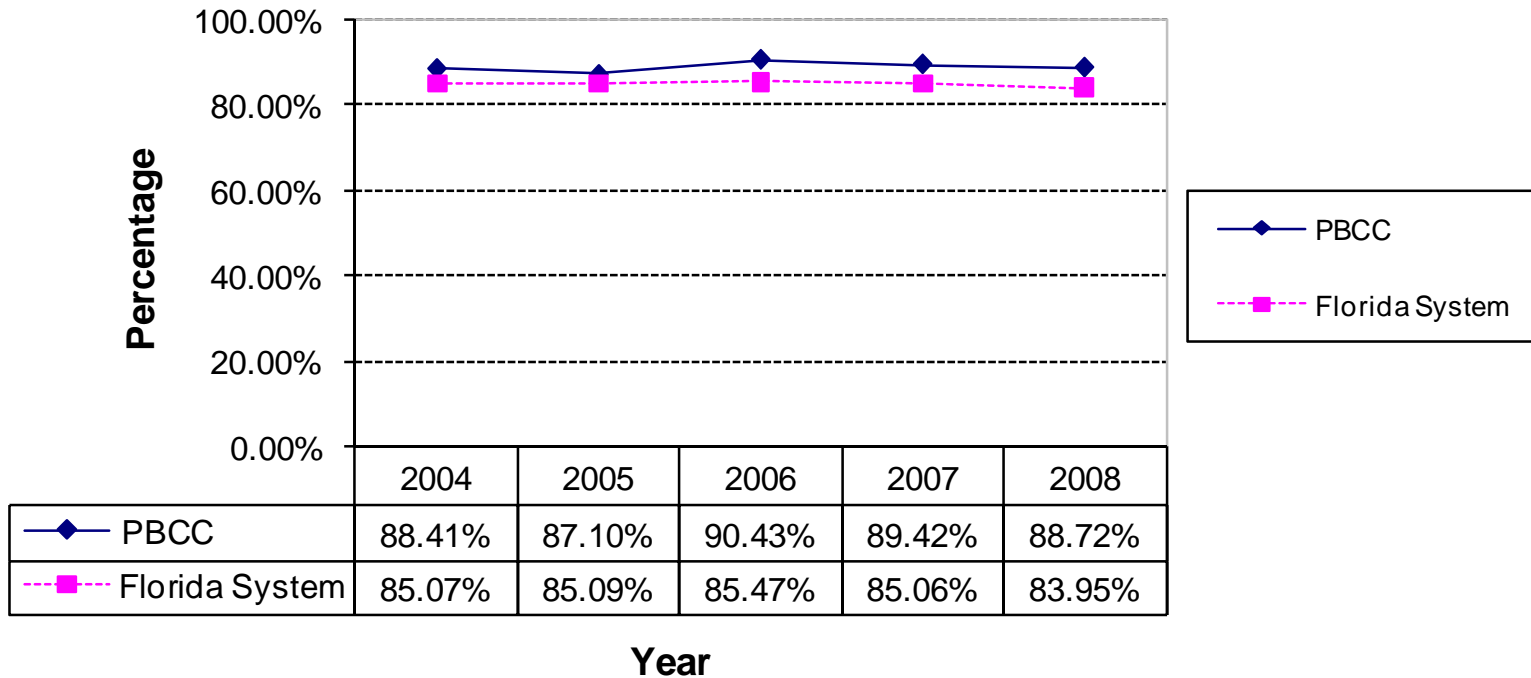


Figure 4
Accountability Outcome Measure 1 Part 2
Comparison of Retention Rate Report for Total
Associate in Science Students between PBCC and Florida System
Total Students (2004-2008)

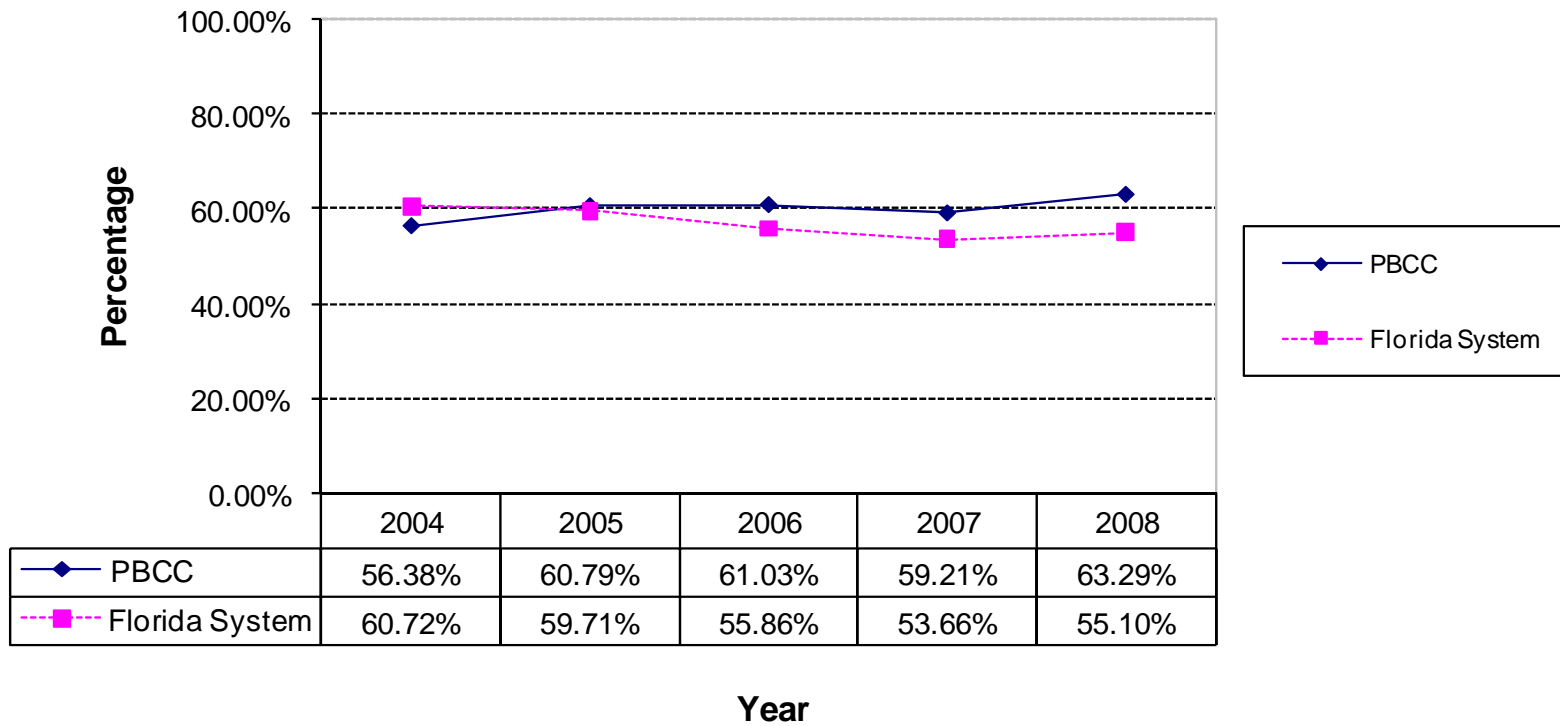


Figure 5
Accountability Outcome Measure 1 Part 2
Comparison of Success Rate Report for Total
Associate in Science Students between PBCC and Florida System
Total Students (2004-2008)

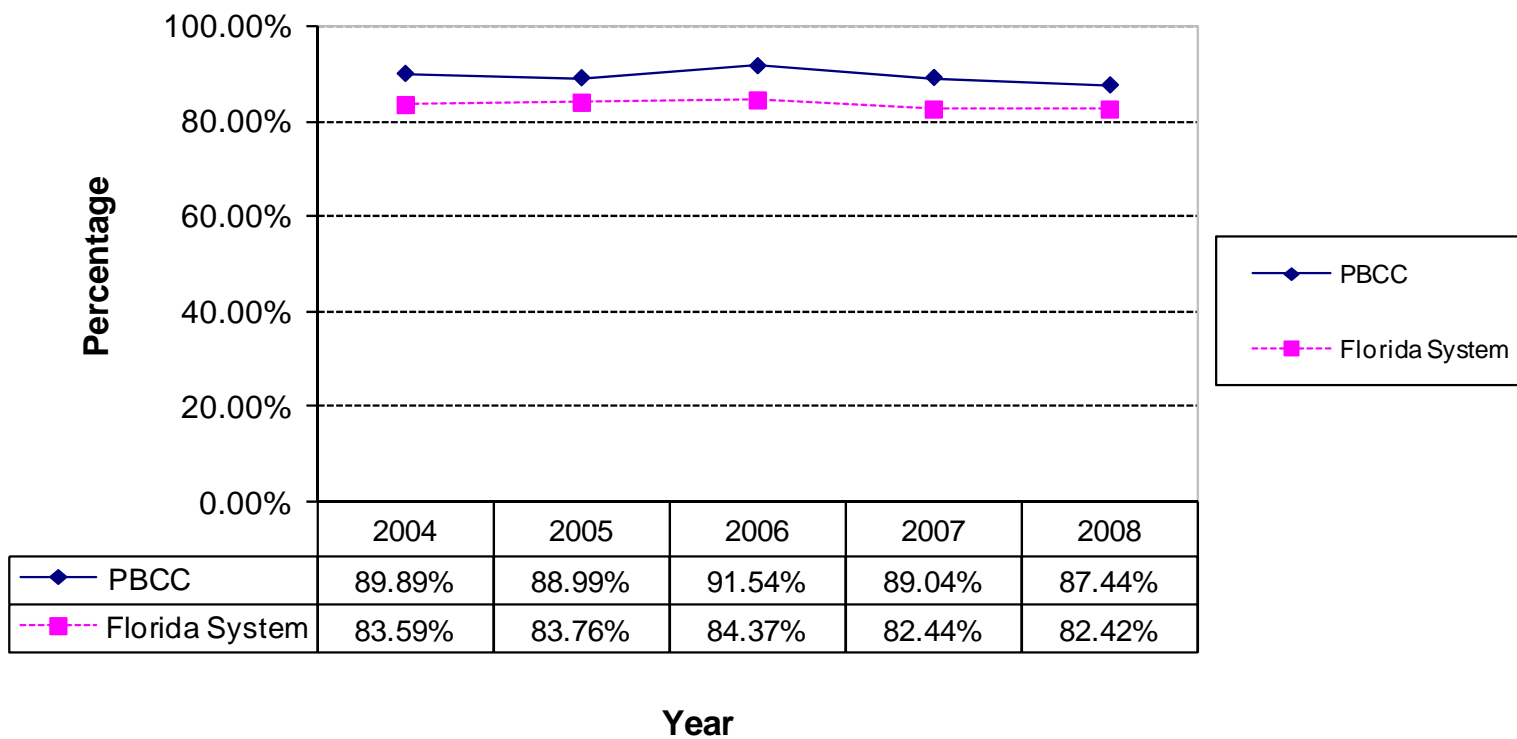


Figure 6
Accountability Outcome Measure 1 Part 2
Comparison of Retention Rate Report for Total
Postsecondary Vocational Certificate Students
between PBCC and Florida System
Total Students (2003-2007)

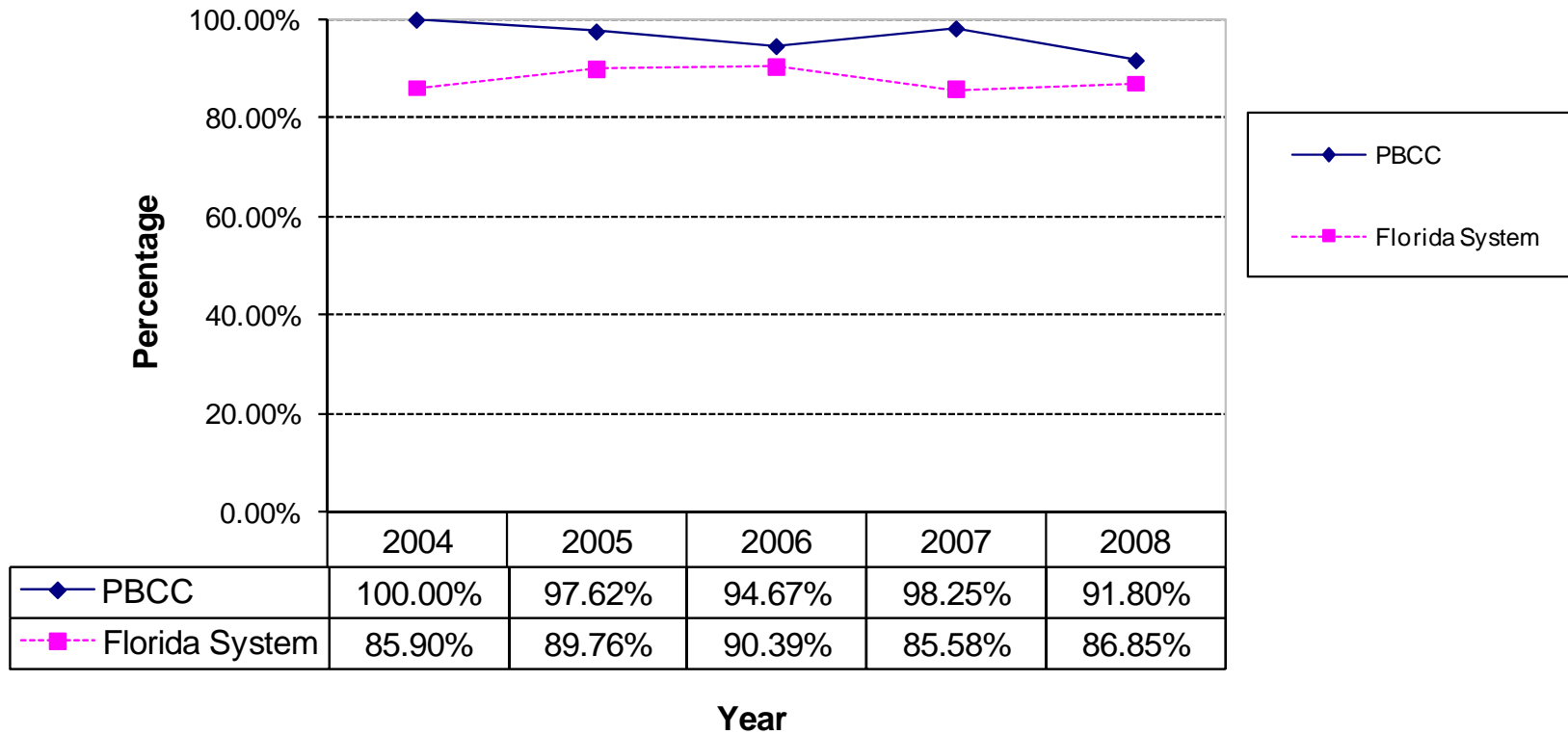


Figure 7
Accountability Outcome Measure 1 Part 2
Comparison of Success Rate Report for Total
Postsecondary Vocational Certificate Students
between PBCC and Florida System
Total Students (2003-2007)

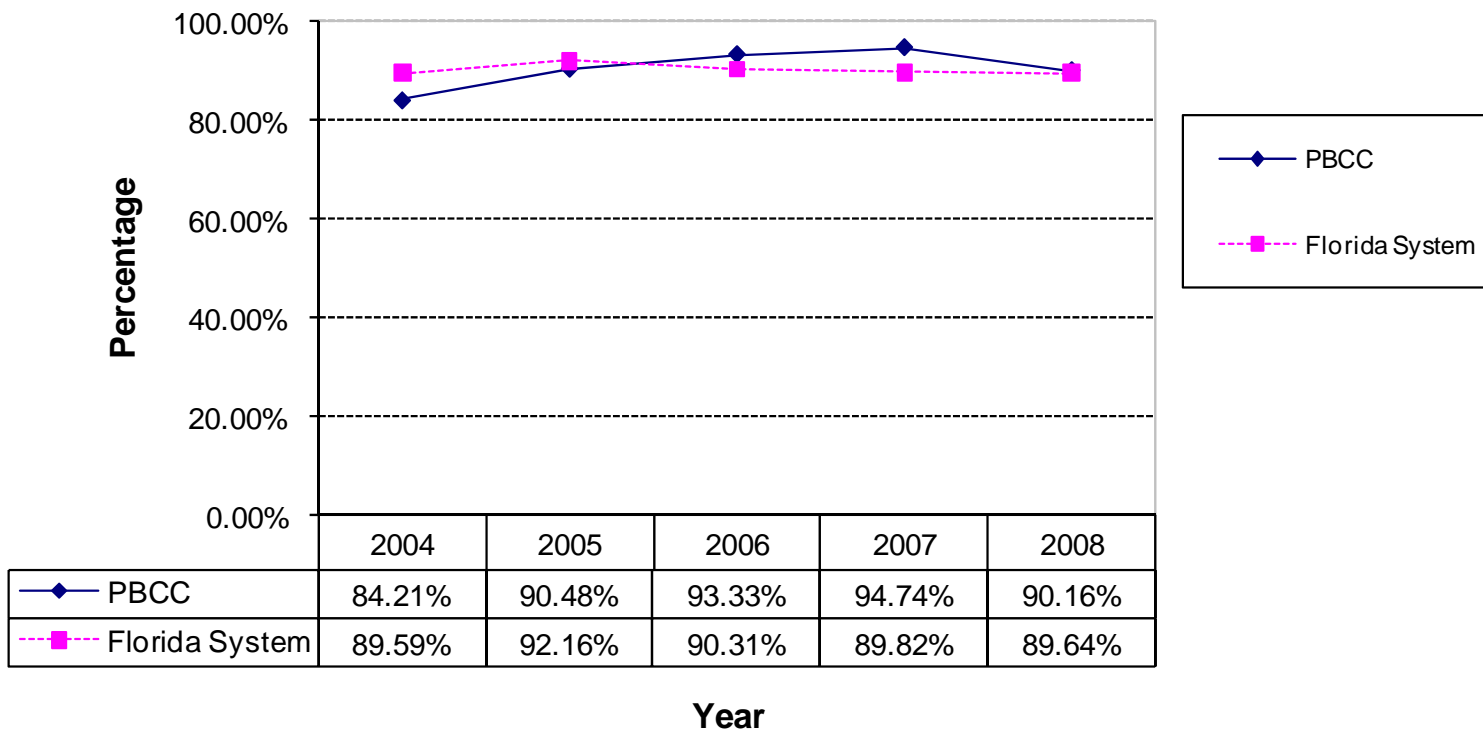


Figure 8
Accountability Outcome Measure 2
Comparison of Associate in Arts Degree Transfer Performance for Mean GPA
between PBCC and Florida System
Total Students (2004-2008)

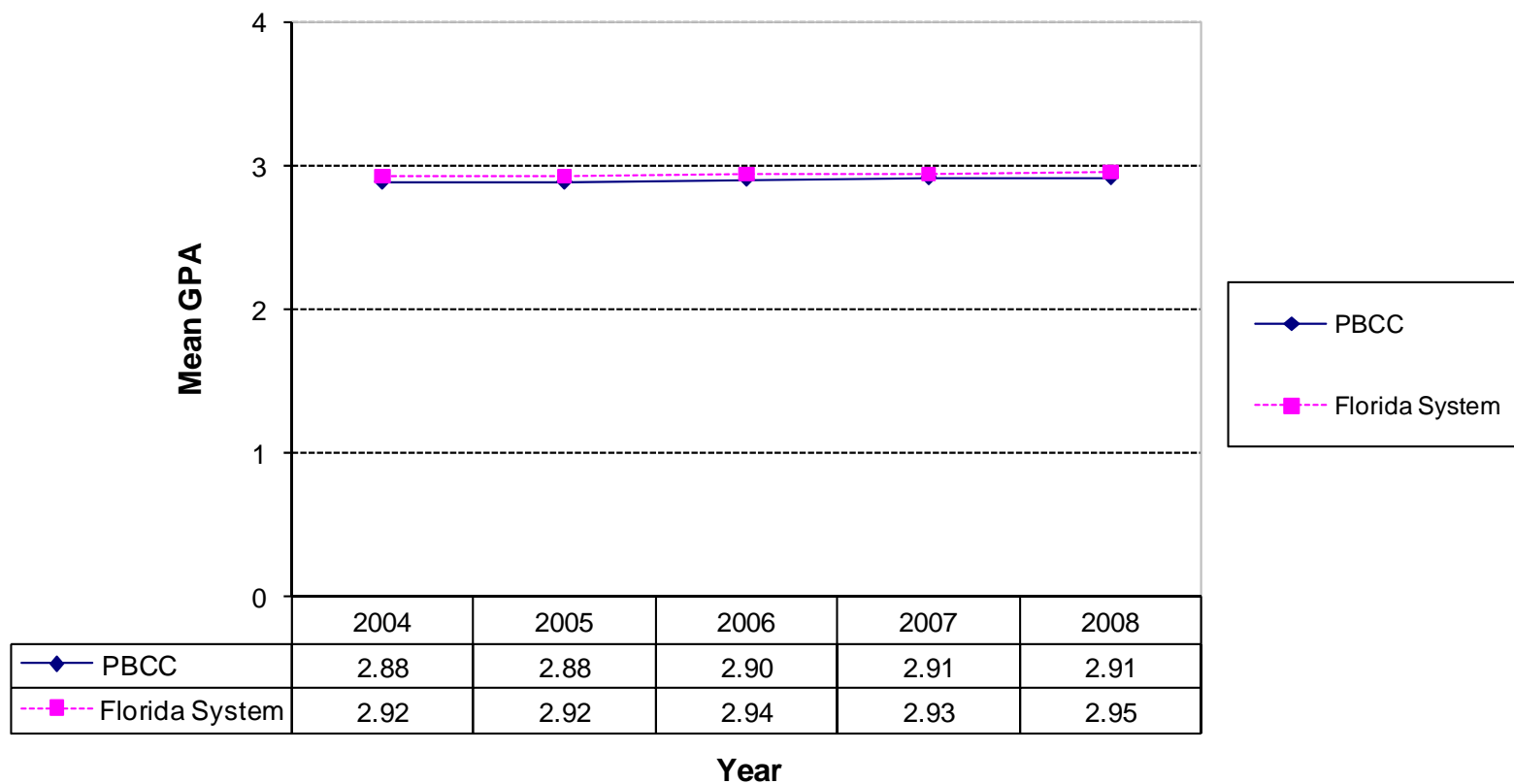


Figure 9
Accountability Outcome Measure 2
Comparison of Associate in Arts Degree Transfer Performance for Percent
with GPAs at or above 2.5
between PBCC and Florida System
Total Students (2004-2008)

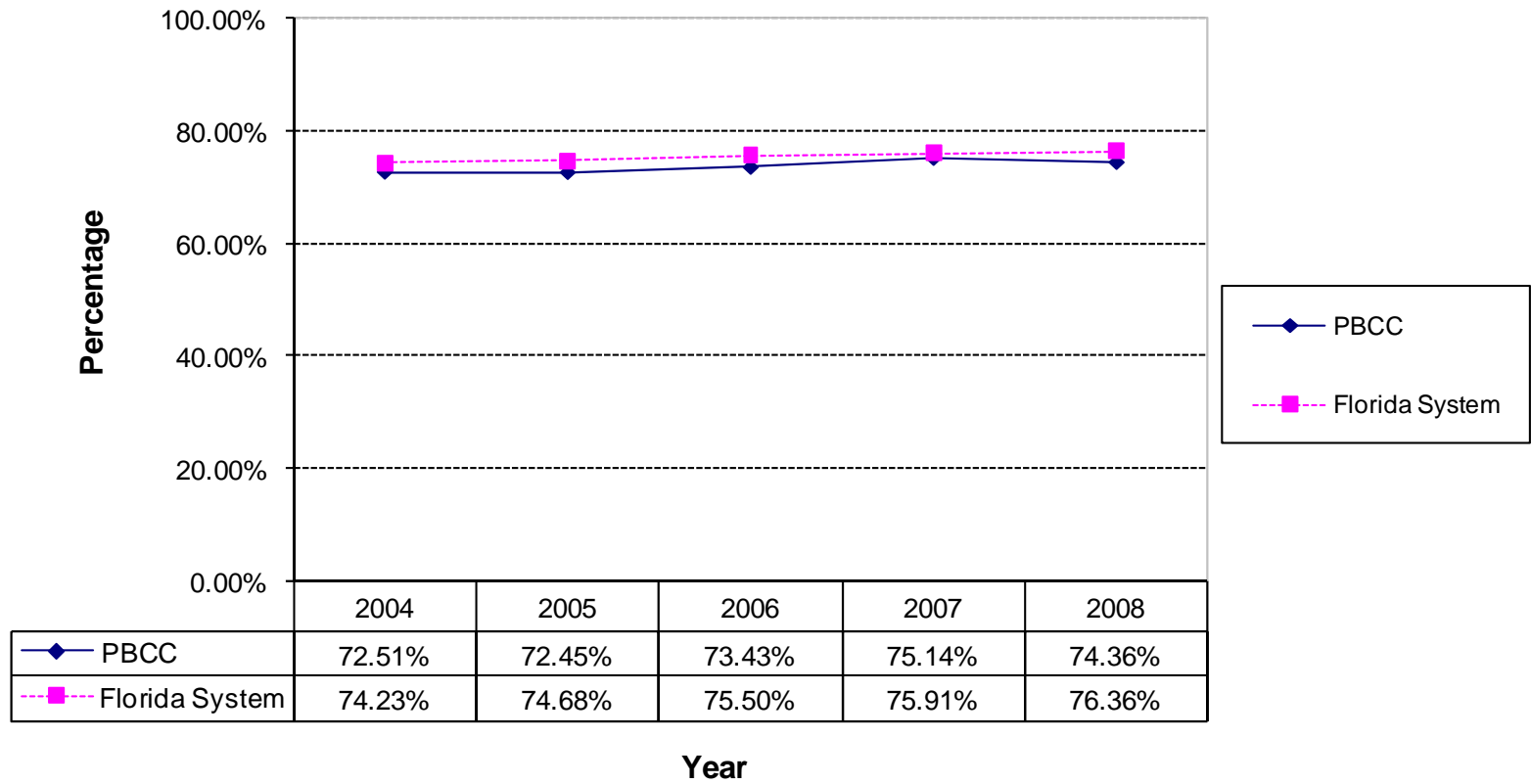


Figure 10
Accountability Outcome Measure 3 Part 1
Comparison of State Licensure Passing Rate Report
between PBCC and Florida System
(2003, 2004, 2005, 2006 and 2007 DATA NOT AVAILABLE)

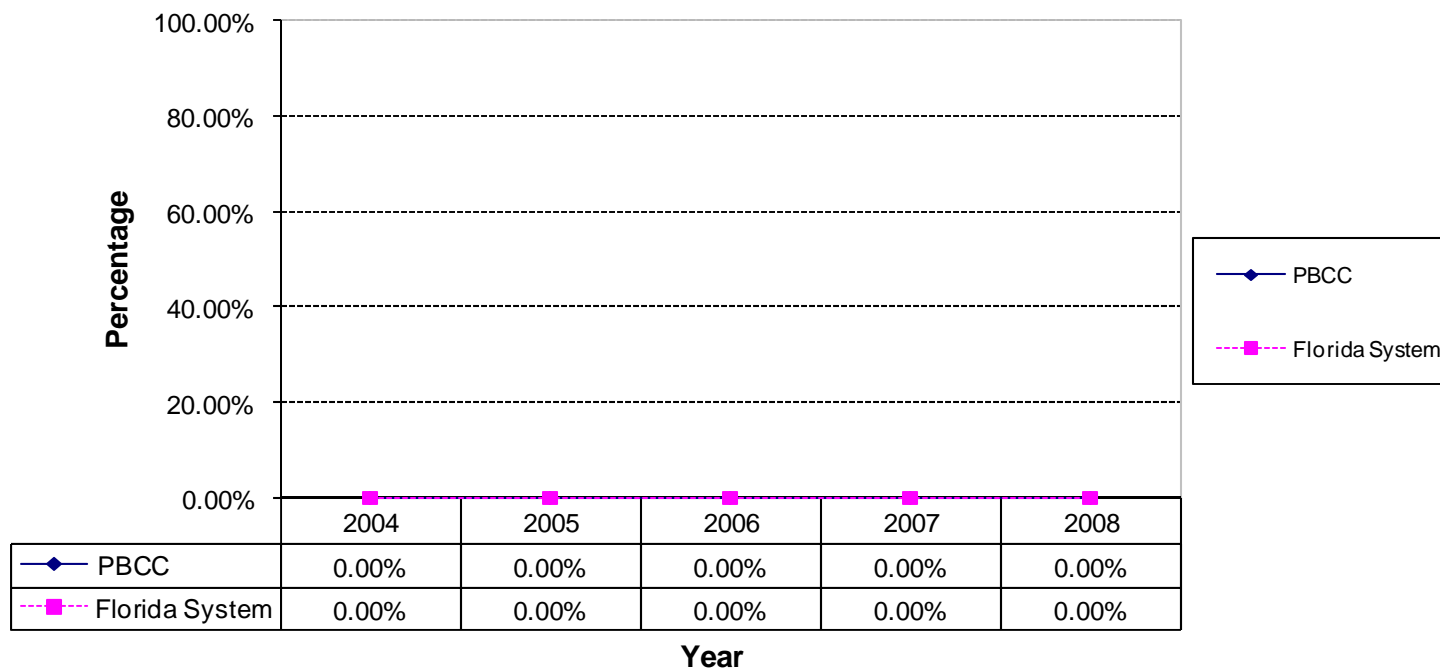


Figure 11
Accountability Outcome Measure 3 Part 2
Comparison of Vocational Placement Rates for Completers
between PBCC and Florida System
Total Students (2004-2008)

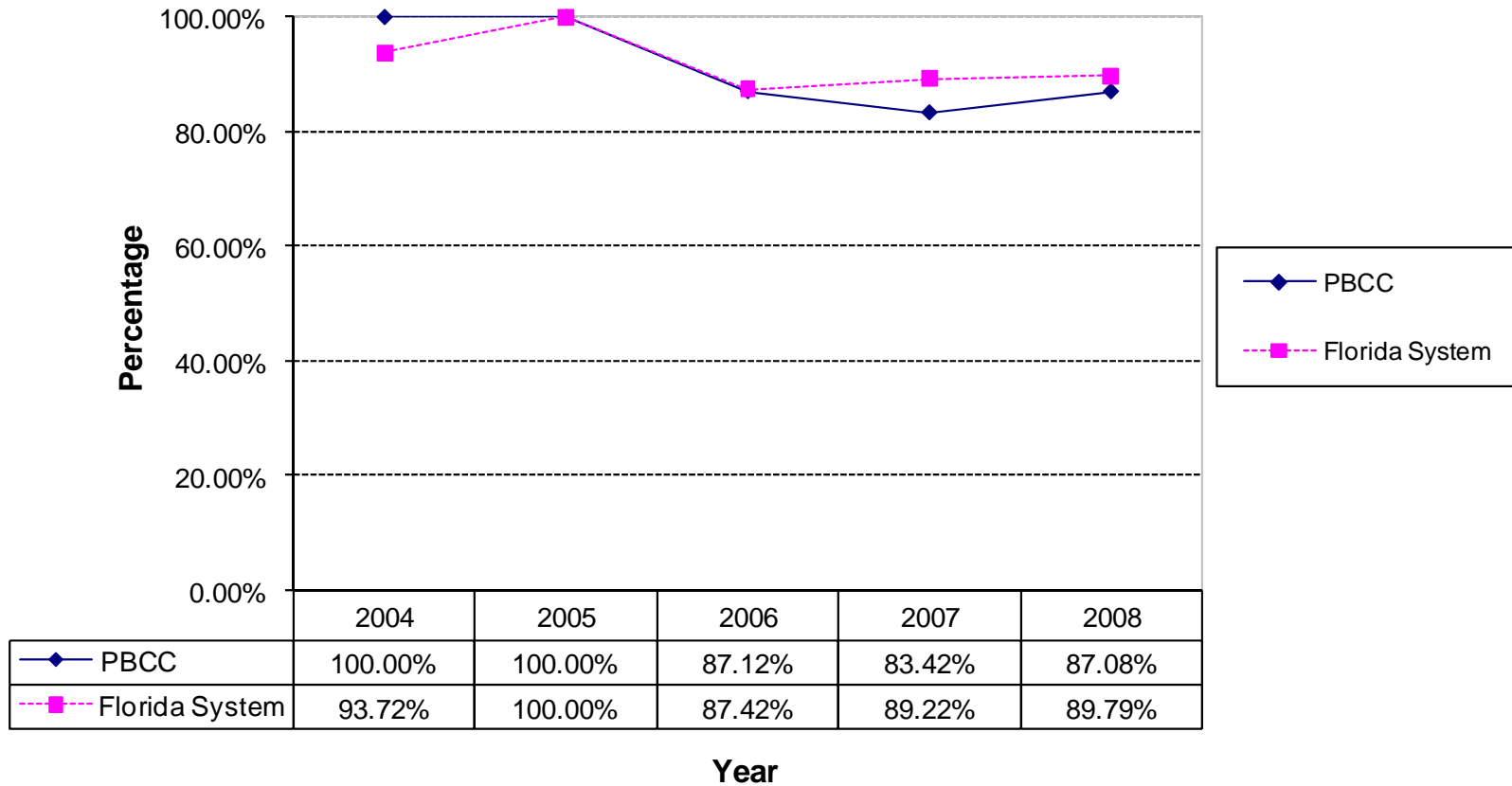


Figure 12
Accountability Outcome Measure 3 Part 2
Comparison of Vocational Placement Rates for Leavers
between PBCC and Florida System
Total Students (2004-2008)

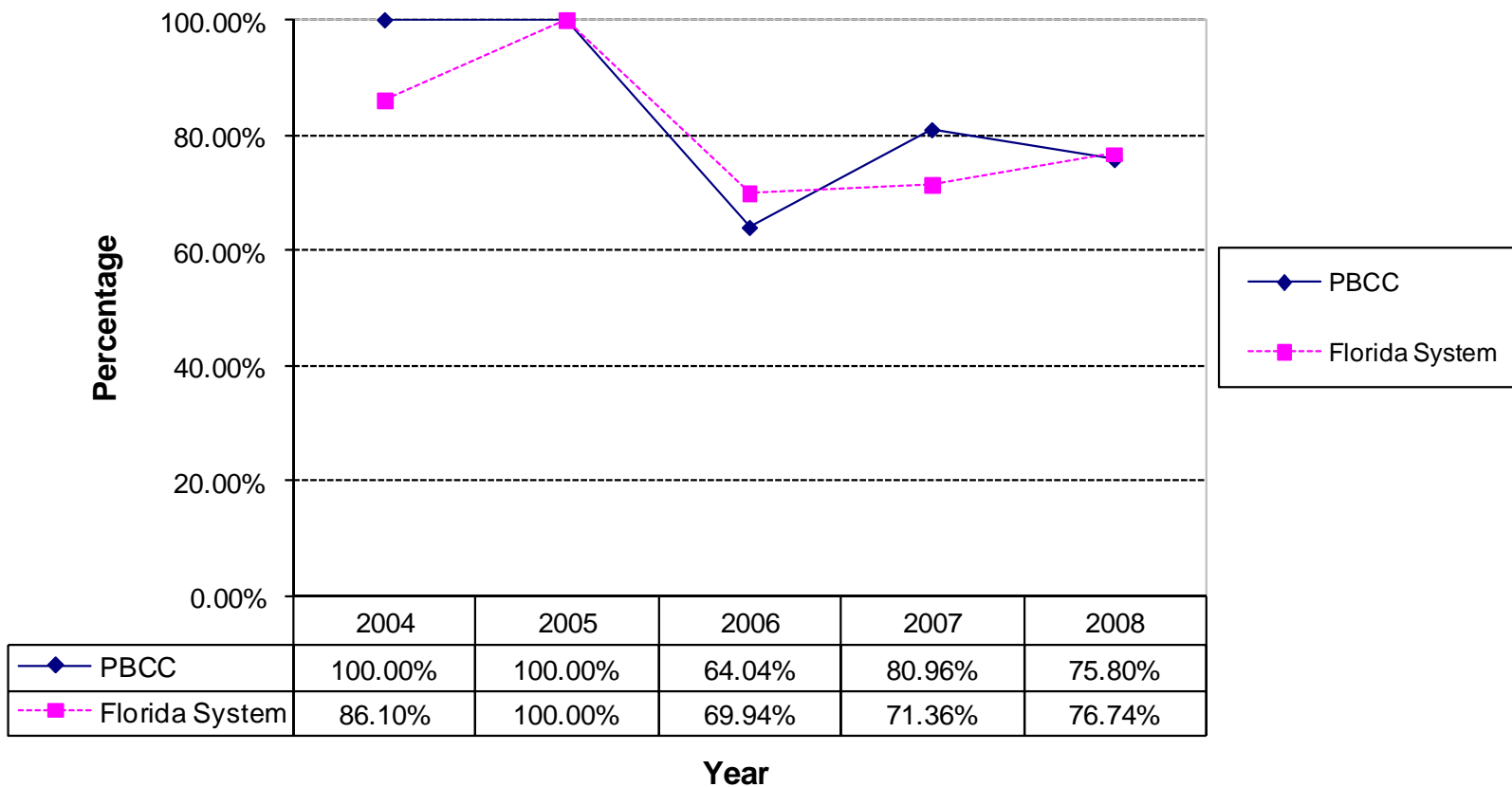


Figure 13
Accountability Outcome Measure 4 Part 1
Comparison of FTIC Students Failed Any Entry-Level Test
between PBCC and Florida System
Total Students (2004-2008)

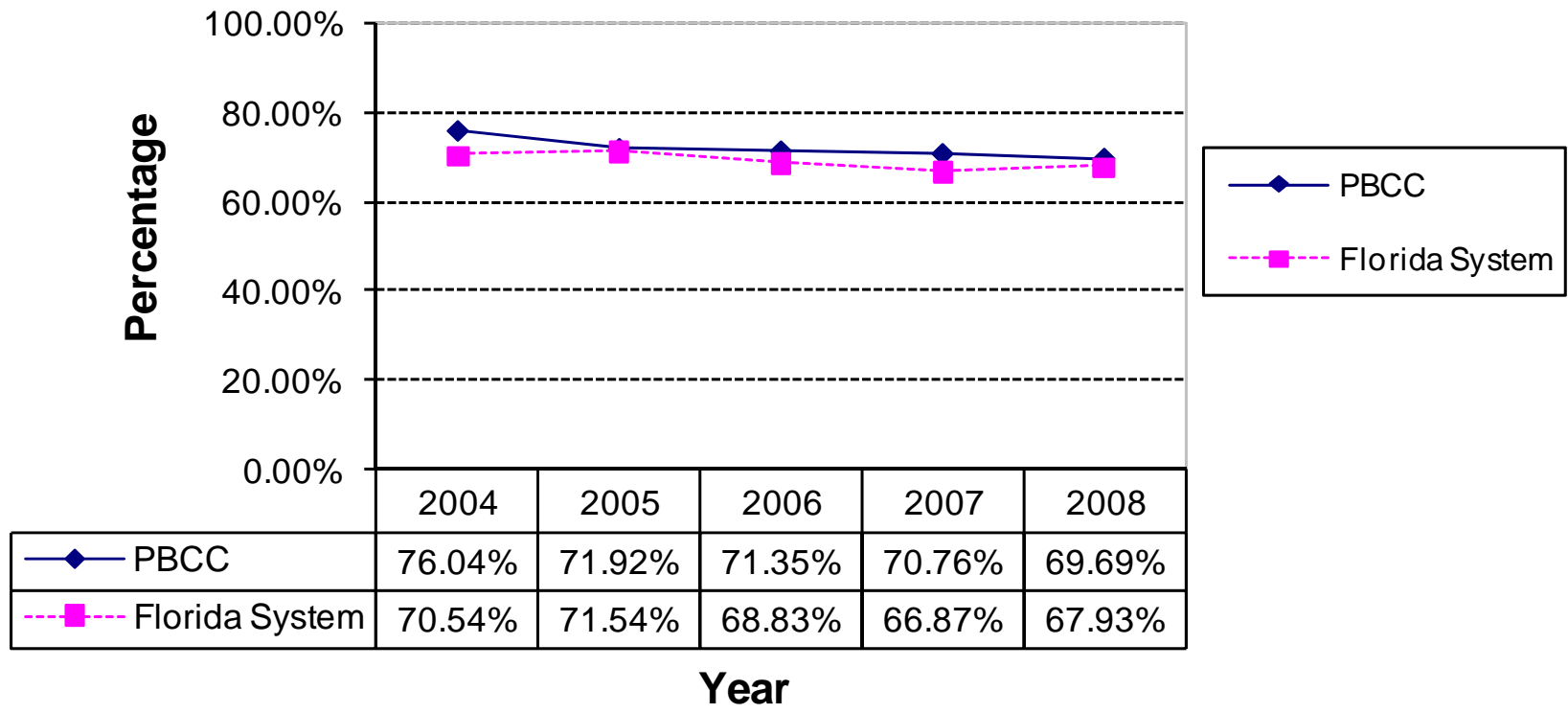


Figure 14
Accountability Outcome Measure 4 Part 1
Comparison of Percent Passed Highest Level for College Preparatory
Reading between PBCC and Florida System
Total Students (2004-2008)

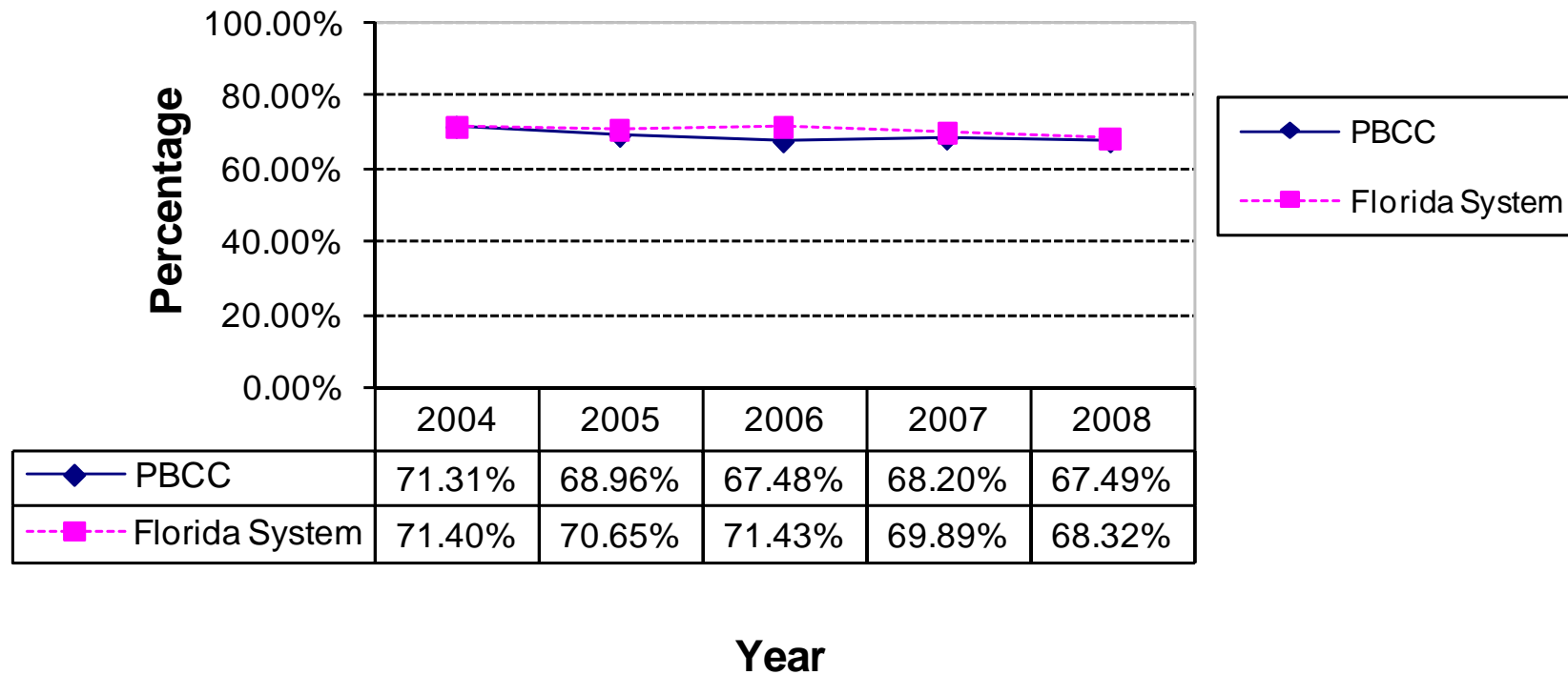


Figure 15
Accountability Outcome Measure 4 Part 1
Comparison of Percent Passed Highest Level for College Preparatory Writing
between PBCC and Florida System
Total Students (2004-2008)

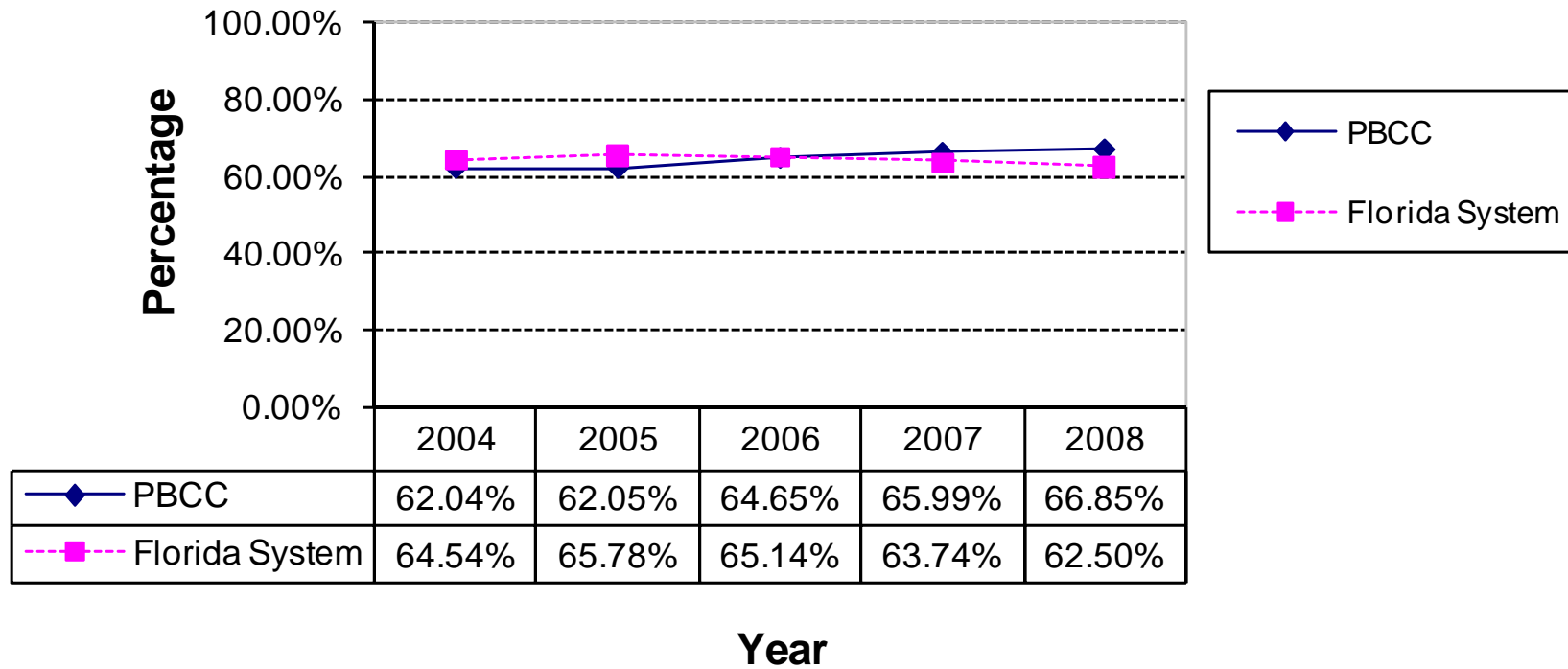


Figure 16
Accountability Outcome Measure 4 Part 1
Comparison of Percent Passed Highest Level for College Preparatory
Math between PBCC and Florida System
Total Students (2004-2008)

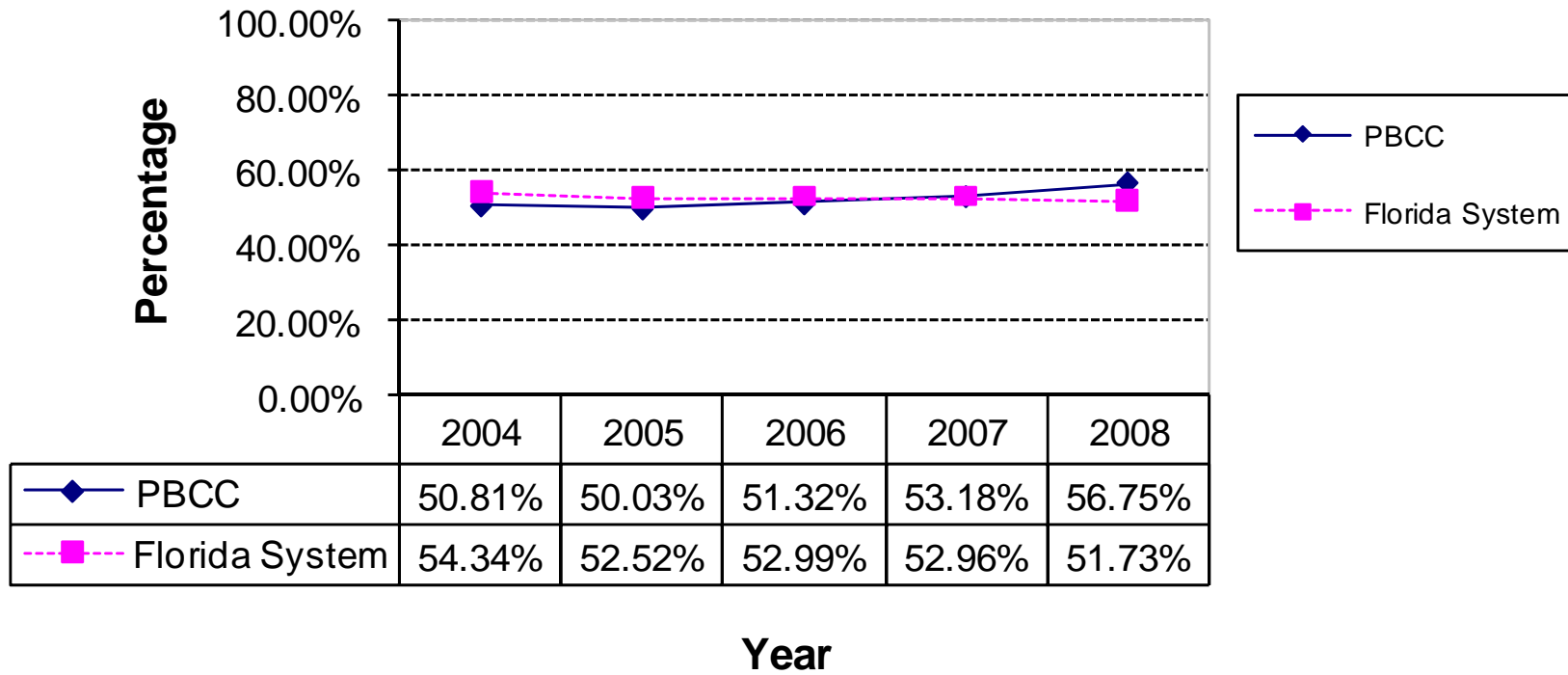


Figure 17
Accountability Outcome Measure 4 Part 2
Comparison of College Preparatory Retention Rate Report for Associate in Arts
Students
between PBCC and Florida System
Total Students (2004-2008)

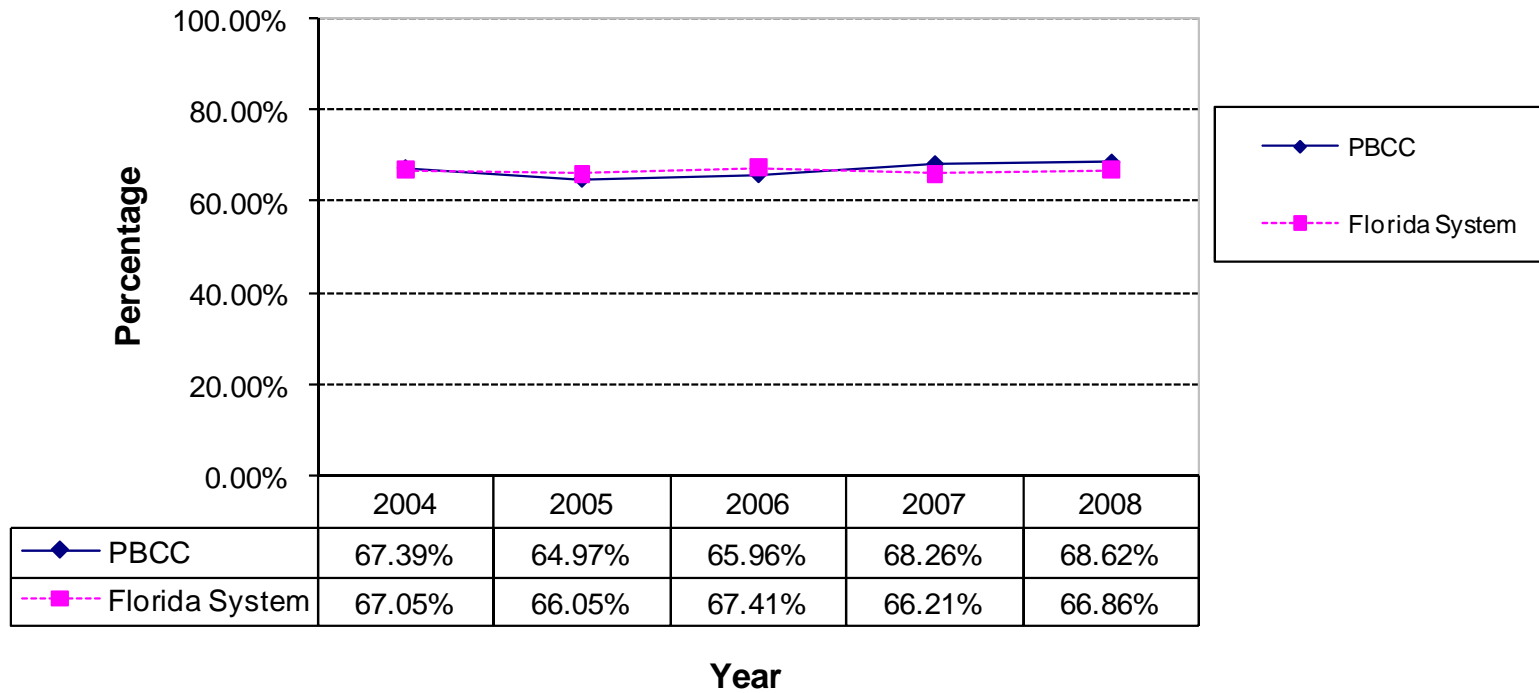


Figure 18
Accountability Outcome Measure 4 Part 2
Comparison of College Preparatory Success Rate Report for
Associate in Arts Students
between PBCC and Florida System
Total Students (2004-2008)

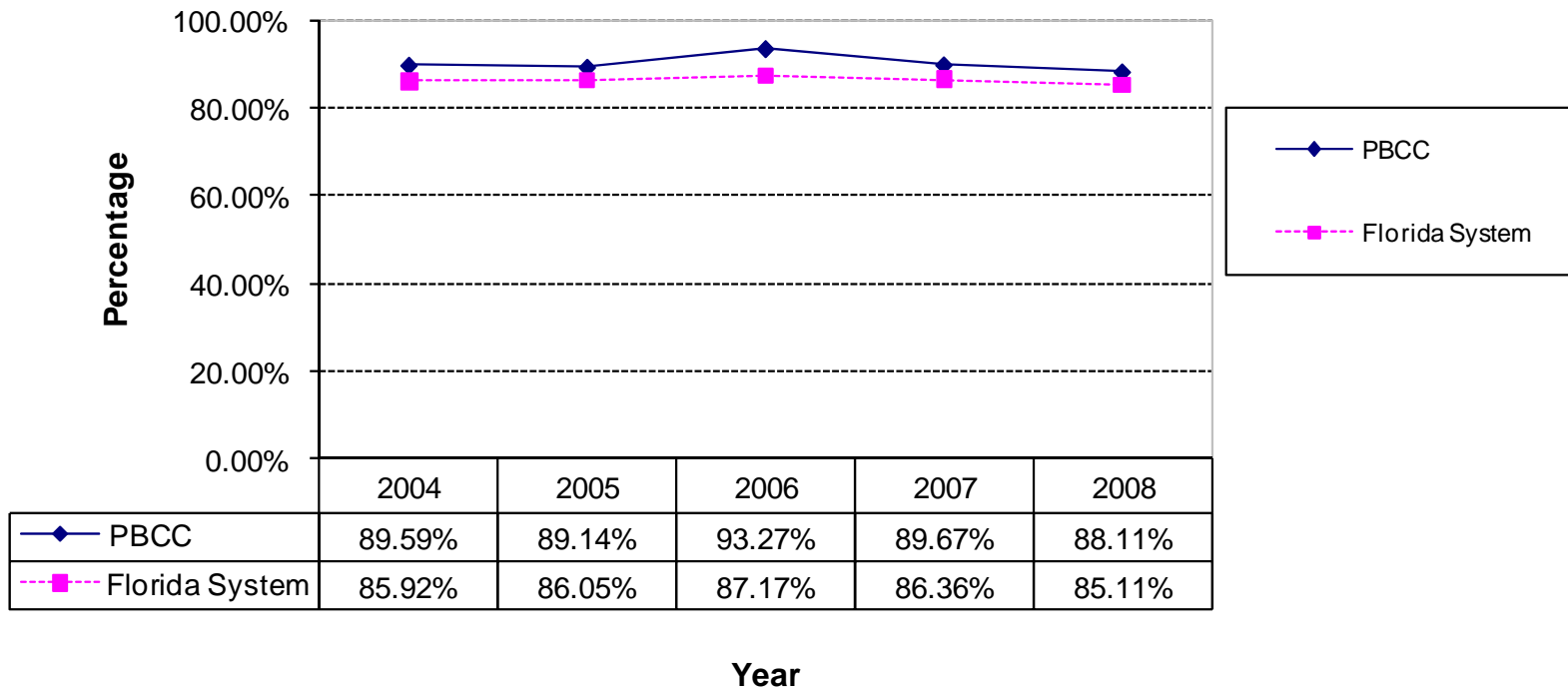


Figure 19
Accountability Outcome Measure 4 Part 2
Comparison of College Preparatory Retention Rate Report
for Associate in Science Students
between PBCC and Florida System
Total Students (2004-2008)

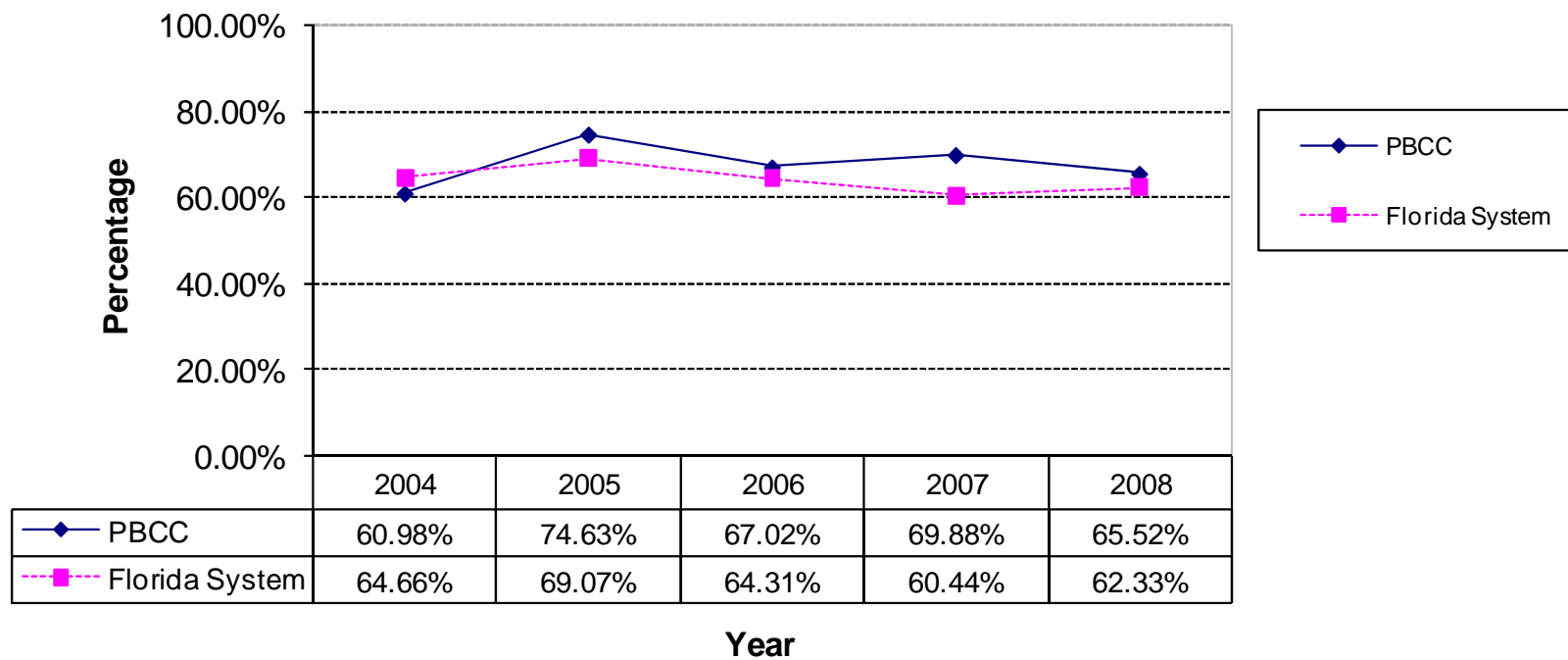


Figure 20
Accountability Outcome Measure 4 Part 2
Comparison of College Preparatory Success Rate Report
for Associate in Science Students
between PBCC and Florida System
Total Students (2004-2008)

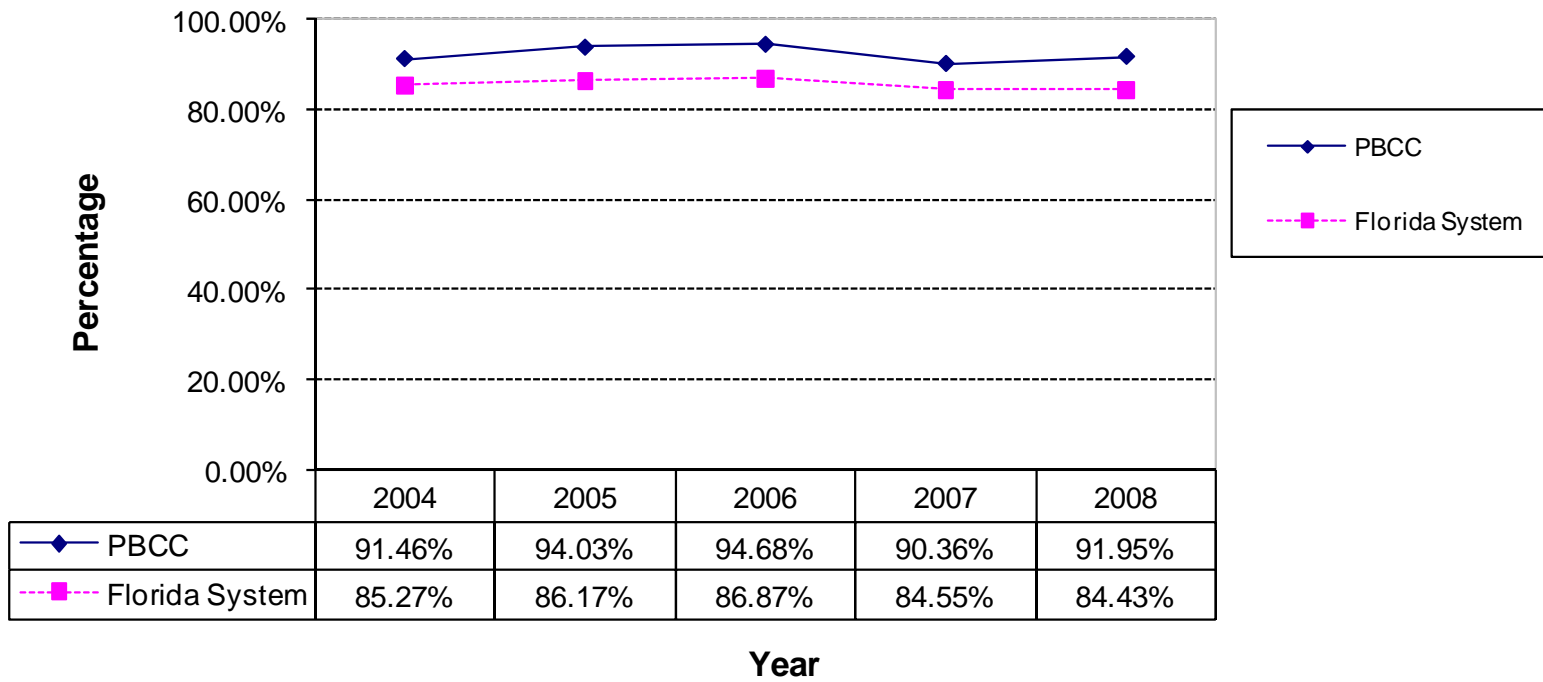


Figure 21
Accountability Outcome Measure 4 Part 2
Comparison of College Preparatory Retention Rate Report for Postsecondary Vocational
Certificate Students
between PBCC and Florida System
Total Students (2003-2007)

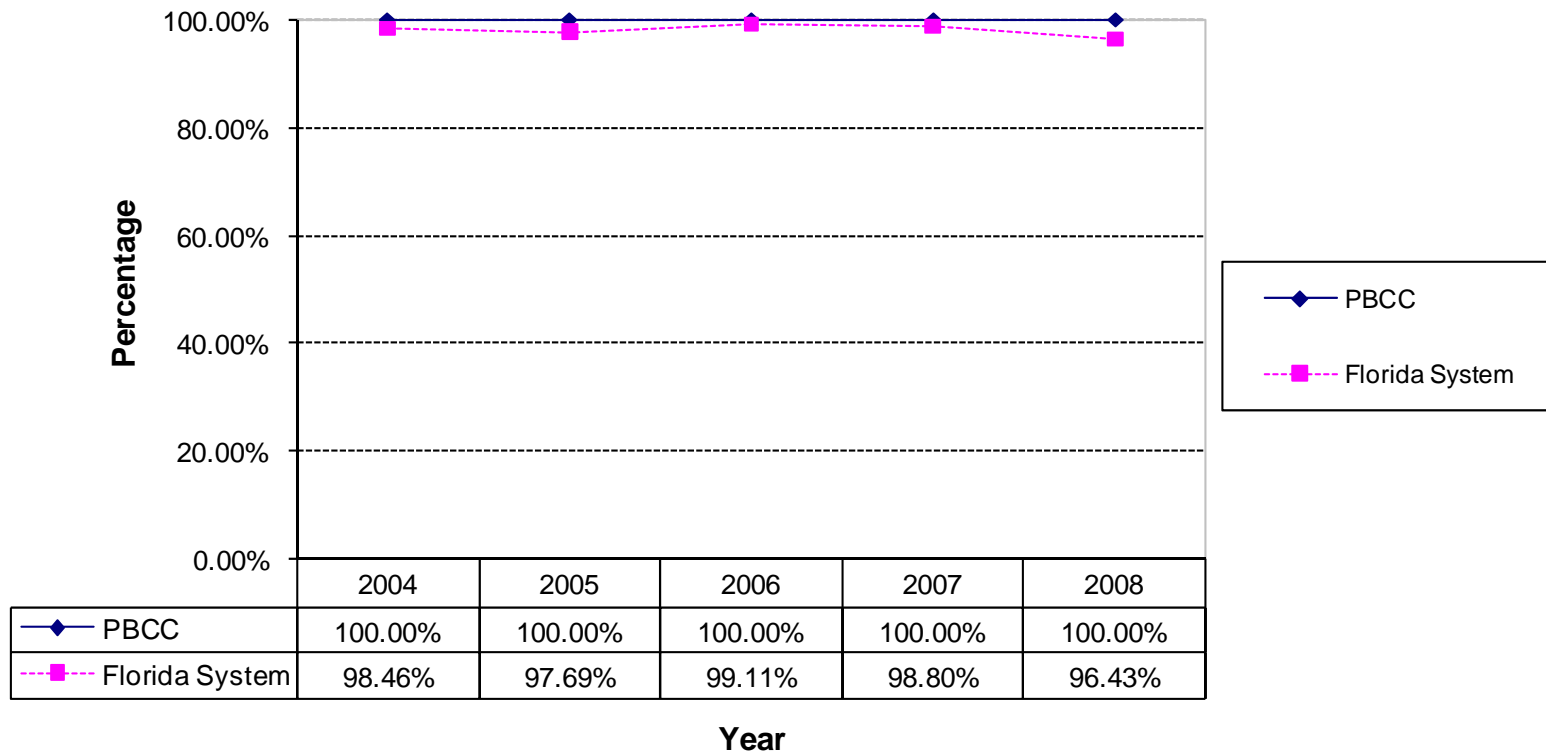


Figure 22
Accountability Outcome Measure 4 Part 2
Comparison of College Preparatory Success Rate Report
for Postsecondary Vocational Certificate Students
between PBCC and Florida System
Total Students (2003-2007)

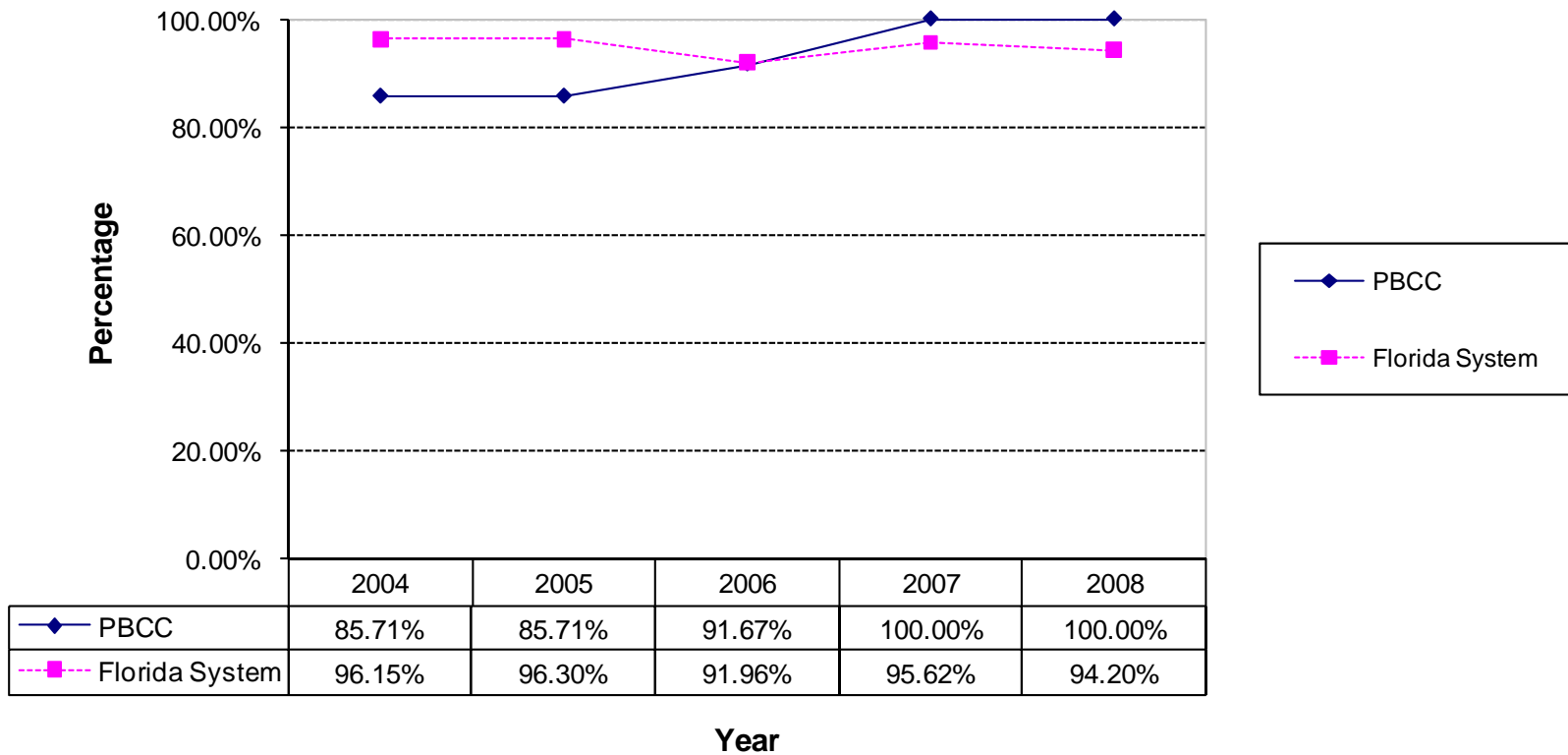


Figure 23
Accountability Outcome Measure 5
Comparison of CLAST Performance Report For Essay Subtest
between PBCC and Florida System
Total Students Who Attempted the CLAST or Had a CLAST Alternative
(2004-2008)

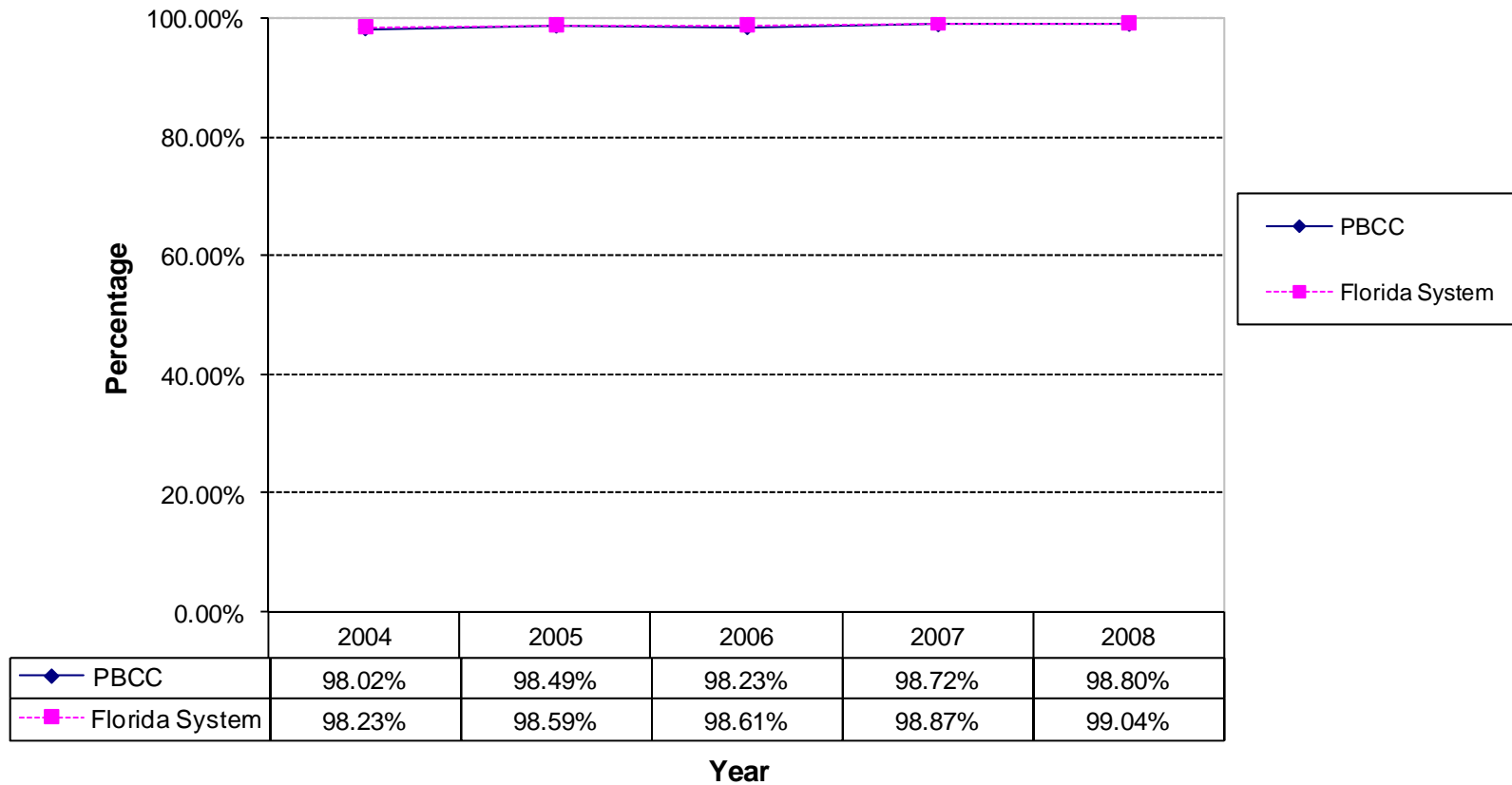


Figure 24
Accountability Outcome Measure 5
Comparison of CLAST Performance Report For Mathematics Subtest
between PBCC and Florida System
Total Students Who Attempted the CLAST or Had a CLAST Alternative
(2004-2008)

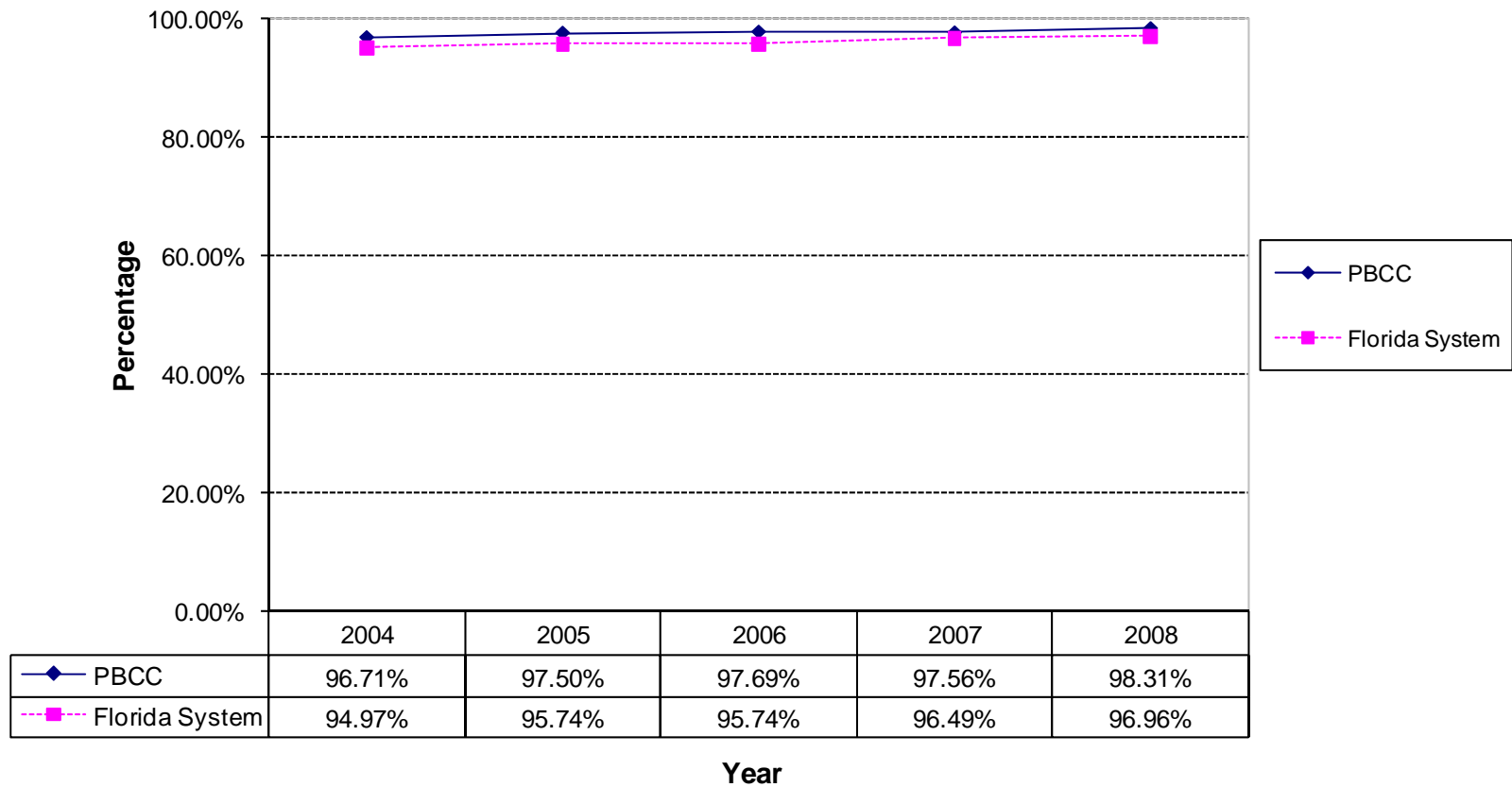


Figure 25
Accountability Outcome Measure 5
Comparison of CLAST Performance Report For Reading Subtest
between PBCC and Florida System
Total Students Who Attempted the CLAST or Had a CLAST Alternative
(2004-2008)

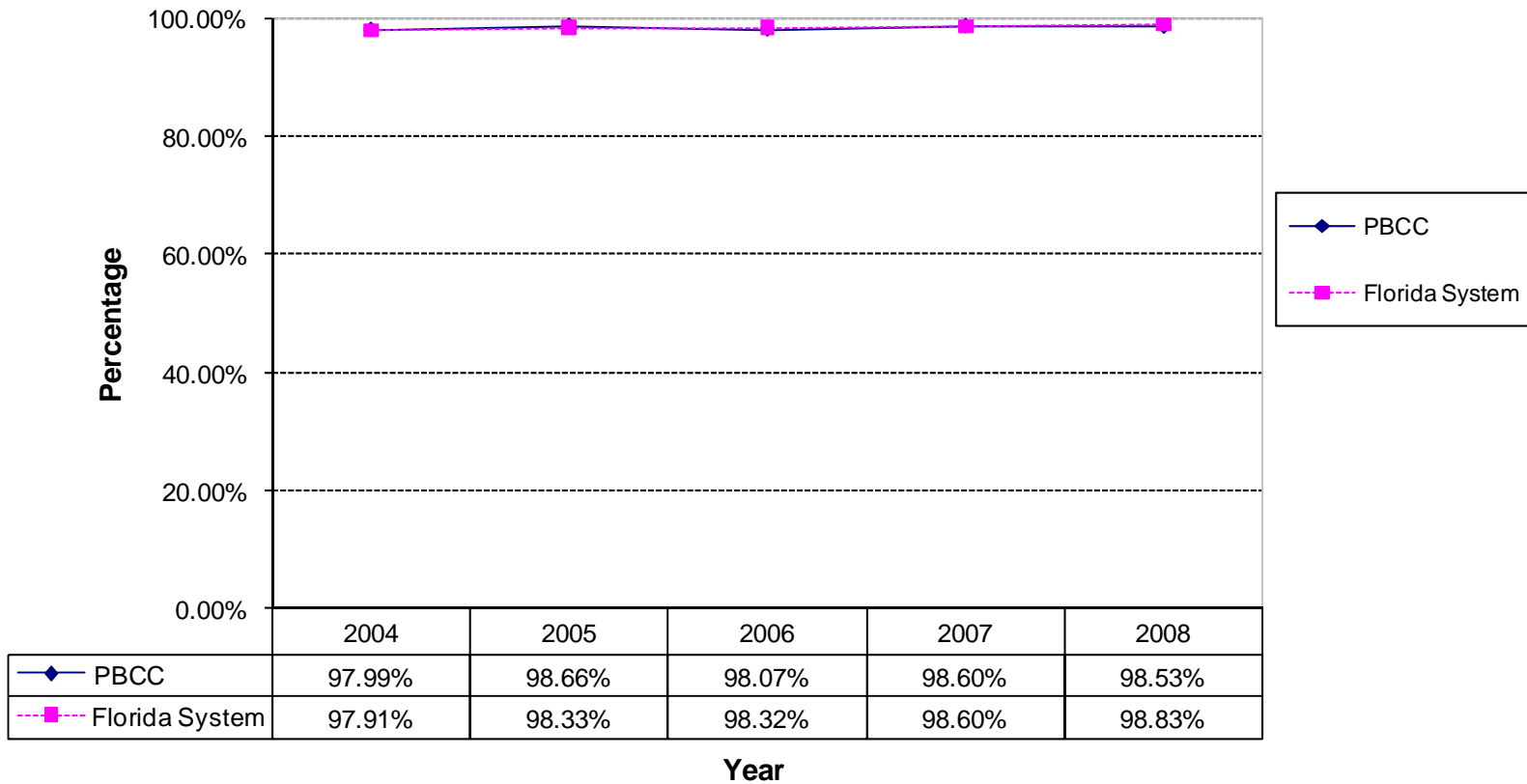


Figure 26
Accountability Outcome Measure 5
Comparison of CLAST Performance Report For English Subtest
between PBCC and Florida System
Total Students Who Attempted the CLAST or Had a CLAST Alternative
(2004-2008)

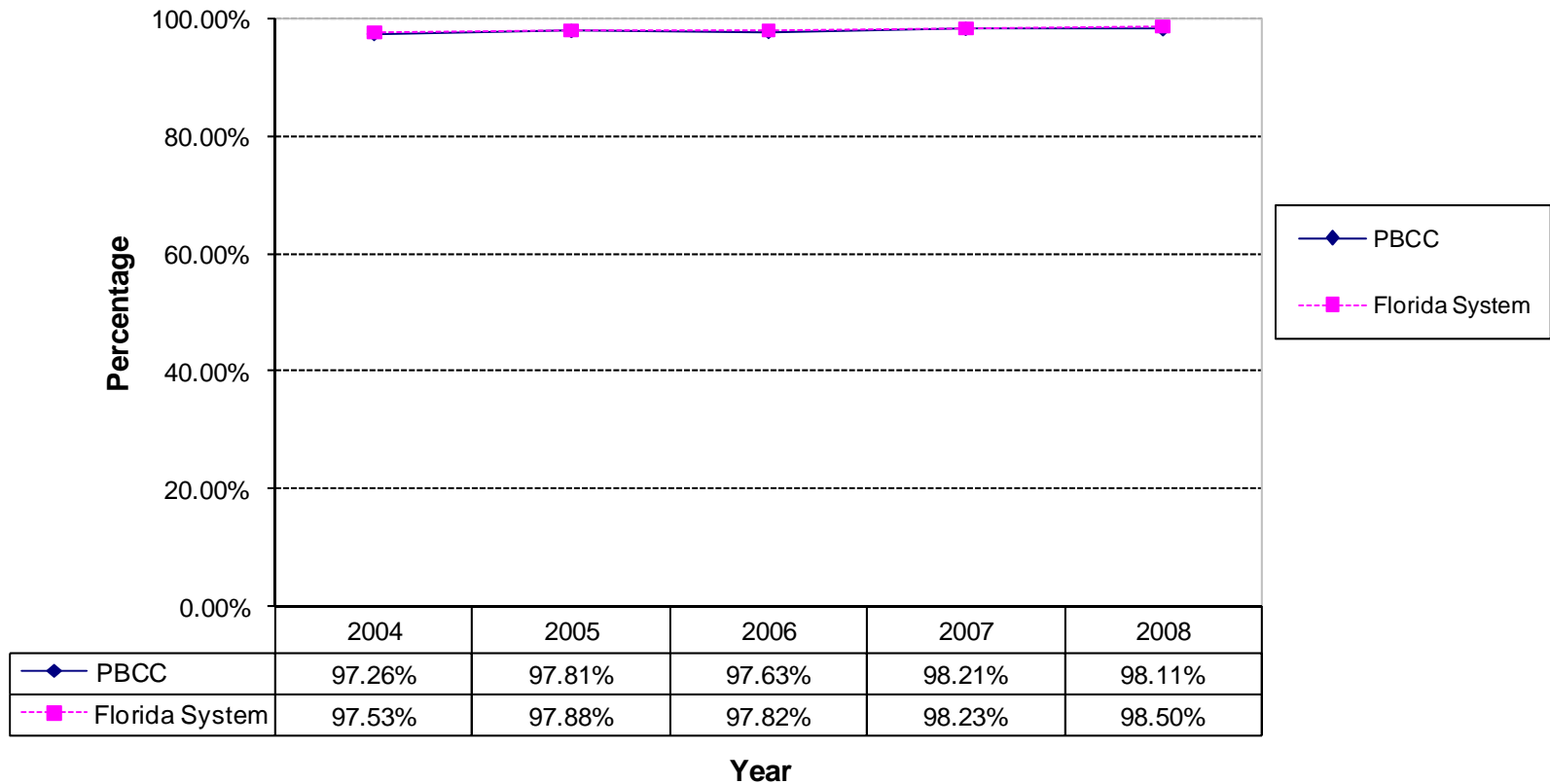


Figure 27
Accountability Outcome Measure 5
Comparison of CLAST Performance Report For All Subtests
between PBCC and Florida System
Total Students Who Attempted the CLAST or Had a CLAST Alternative
(2004-2008)

