



# **Accountability Report Trends 2003-2007**

*Comparing PBCC Performance to the State Benchmarks*

**Academic Affairs**

May 2008

---

**TABLE OF CONTENTS**

	<b>Page</b>
<b>Introduction</b> .....	2
Description of Measures .....	2
Definitions .....	4
<b>Analysis of Each Measure</b> .....	6
<b>Conclusion</b> .....	8
<b>Appendix - Tables and Graphs</b>	
Figure 1 – Measure 1, Part 1 .....	9
Figure 2 – Measure 1, Part 2 AA Retention .....	10
Figure 3 – Measure 1, Part 2 AA Success .....	11
Figure 4 – Measure 1, Part 2 AS Retention .....	12
Figure 5 – Measure 1, Part 2 AS Success .....	13
Figure 6 – Measure 1, Part 2 PVCS Retention .....	14
Figure 7 – Measure 1, Part 2 PVCS Success .....	15
Figure 8 – Measure 2 Mean GPA .....	16
Figure 9 – Measure 2 GPA Above 2.5 .....	17
Figure 10 – Measure 3, Part 1 .....	18
Figure 11 – Measure 3, Part 2 Placement Rates for Completers .....	19
Figure 12 – Measure 3, Part 2 Placement Rates for Leavers .....	20
Figure 13 – Measure 4, Part 1 Failed Entry-Level Test .....	21
Figure 14 – Measure 4, Part 1 Passed Highest Level College Prep Read .....	22
Figure 15 – Measure 4, Part 1 Passed Highest Level College Prep Write .....	23
Figure 16 – Measure 4, Part 1 Passed Highest Level College Prep Math .....	24
Figure 17 – Measure 4, Part 2 AA College Prep Retention Rate .....	25
Figure 18 – Measure 4, Part 2 AA College Prep Success Rate .....	26
Figure 19 – Measure 4, Part 2 AS College Prep Retention Rate .....	27
Figure 20 – Measure 4, Part 2 AS College Prep Success Rate .....	28
Figure 21 – Measure 4, Part 2 PSVC College Prep Retention Rate .....	29
Figure 22 – Measure 4, Part 2 PSVC College Prep Success Rate .....	30
Figure 23 – Measure 5 Comparison of CLAST for Essay .....	31
Figure 24 – Measure 5 Comparison of CLAST for Math .....	32
Figure 25 – Measure 5 Comparison of CLAST for Reading .....	33
Figure 26 – Measure 5 Comparison of CLAST for English .....	34
Figure 27 – Measure 5 Comparison of CLAST for All Subtests .....	35

## INTRODUCTION

The Accountability Report was enacted by the Florida Legislature in 1993 as the State of Florida moved toward measuring performance and outcomes in instructional programs. The purpose of the Accountability Report is to assess the improvement and quality of the instructional and administrative efficiency of the Florida Community College System. This report is a key element in PBCC's institutional effectiveness assessment process.

The following measures were developed by the legislature to assess accountability.

### Description of Measures

- 1. Measure 1 Part 1: Prior Year High School Graduates Enrolled the Following Year Enrollment Report** - This report shows the number and percent of high school graduates the College enrolls from the previous year in its service area.
- 2. Measure 1 Part 2: Enrollment, Retention, and Success Report for Associate in Arts (A.A.), Associate in Science (A.S.), and Postsecondary Vocational Certificate (PSVC) Students** - This report presents the retention and success rates of first-time-in-college A.A. and A.S. degree seeking students and PSVC seeking students.
- 3. Measure 2: Associate in Arts Degree Transfer Performance Report** - This report indicates the performance of A.A. students after they have transferred to a Florida State University.
- 4. Measure 3 Part 1: State Licensure Passing Rate Report** - This report shows the number and percentage of students passed for each appropriate vocational program licensure exam.
- 5. Measure 3 Part 2: Vocational Placement Rates of Associate in Science and Certificate Program Completers and Leavers** - This report displays the number and percentage of students who completed and were placed into an occupation related to their instruction, and also the number and percentage of students who left and were placed into an occupation related to their instruction.
- 6. Measure 4 Part 1: College Preparatory Success Rate Report** - This report presents the number and percent of first-time- in-college students who failed some portions of their entrance exam, how many of those enrolled in the college preparatory classes, and the number and percent of those who passed the highest level college preparatory courses.

- 7. Measure 4 Part 2: College Preparatory Enrollment, Retention and Success Report for Associate in Arts, Associate in Science, and Postsecondary Vocational Certificate Students** - This report shows retention and success rates of first-time- in-college A.A. and A.S. degree seeking students and PSVC seeking students, who have completed all college preparatory requirements.
  
- 8. Measure 5: CLAST Performance Report** - This reports shows the passing number and percent of students who attempted the CLAST or had a CLAST alternative for each CLAST subtest and for all subtests combined.

## Definitions

**Prior Year High School Graduates Enrolled the Following Year** - the number and percent of previous year high school graduates that the College enrolls from in its service district's high schools.

**Associate in Arts Degree Transfer Performance** - the performance of A.A. students after they have transferred to a Florida state university.

**State Licensure Passing Rate** - the number and percentage of students passed for each appropriate vocational program licensure exam.

**Vocational Placement Rates of Associate in Science and Certificate Program Completers and Leavers** - number and percentage of students who completed and were placed into an occupation related to their instruction, and also the number and percentage of students who left and were placed into an occupation related to their instruction.

**College Preparatory Enrollment, Retention and Success for Associate in Arts, Associate in Science, and Postsecondary Vocational Certificate Students** - retention and success rates of first- time- in- college A.A. and A.S. degree seeking students and PSVC seeking students, who have completed all college preparatory requirements.

**College Preparatory Success Rate** - the number and percent of first- time- in- college students who failed some portions of their entrance exam, how many of those enrolled in the college preparatory classes, and the number and percent of those who passed the highest level college preparatory courses.

**CLAST Performance** - the passing number and percent of students who attempted the CLAST or had a CLAST alternative for each CLAST subtest, and for all subtests combined.

**Source:** Cohort population includes first-time-in-college (FTIC) students from the beginning of the tracking period who took an entry level test, achieved 18 credit hours (A.A. and A.S) or 9 credit hours (PSVC) by the end of the tracking period and were seeking A.A., A.S. and PSVC.

**Number Graduated:** Of the cohort, the number who graduated

**Number Enrolled in Good Academic Standing:** Of the cohort, excluding the Number Graduated, the number of students still enrolled at the institution during the following terms with a GPA at or above 2.0.

**Number Enrolled Not in Good Academic Standing:** Of the cohort, excluding the Number Graduated, the number of students still enrolled at the institution during the terms, with a GPA below 2.0

**Number who Left in Good Academic Standing:** Of the cohort, excluding the number Graduated, the number of students who were not enrolled at the institution during the terms, that had a GPA at or above 2.0

**Retention Rate** = (# Graduated + Enrolled in good Standing + #Enrolled Not in Good Standing) / Total Cohort

**Success Rate** = (# Graduated + Enrolled in Good Standing + #Left in Good Standing) / Total Cohort

## ANALYSIS OF EACH MEASURE

### 1. Measure 1, Part 1 - Prior Year High School Graduates Enrolled the Following Year Enrollment Report

- Palm Beach Community College enrolled 27.80% of the prior year high school graduates in its service district. This percentage is lower than the enrollment averages for the Florida Community College System and the five-year trend shows a decline over time (Figure 1, page 9).

### 2. Measure 1, Part 2 - Enrollment, Retention, and Success Report for Associate in Arts, Associate in Science, and Postsecondary Vocational Certificate Students.

- **Associate in Arts students:** Palm Beach Community College attained a 66.67% retention rate and a 89.42% success rate for associate in arts students in the current report. The five-year trend in retention and success rates indicate that the College consistently exceeds or equals the Florida Community College System averages (Figures 2 – 3, pages 10, 11).
- **Total Associate in Science students:** Palm Beach Community College achieved a 59.21% retention rate for associate in science students and a 89.04% success rate. Although these percentages represent small declines from the previous year, they still exceed the average rates of retention and success for Florida Community College System. (Figures 4 – 5, pages 12, 13).
- **Total Postsecondary Vocational Certificate students:** Palm Beach Community College achieved a 98.25% retention rate and a 94.74% success rate. These rates represent improvement over the prior year and are substantially higher than the Florida Community College System average (Figures 6 – 7, pages 14, 15).

### 3. Measure 2 - Associate in Arts Degree Transfer Performance Report

- The average GPA obtained by Palm Beach Community College Associate in Arts transfer students in the State University System was 2.91; this average GPA is similar to the Florida Community College System average of 2.93. Additionally, 75.14% of AA transfer students achieved a GPA at or above 2.50, a percentage that parallels the Florida Community College System average in the five-year trend comparison (Figure 8 - 9, pages 16, 17).

**4. Measure 3 Part 1 - State Licensure Passing Rate Report**

- The data for this section of the report has not been distributed by the state of Florida since 2000 (Figure 10, page 18).

**5. Measure 3 Part 2: Vocational Placement Rates of Associate in Science and Certificate Program Completers and Leavers**

- Palm Beach Community College completers achieved an 83.42% placement rate while PBCC leavers attained a 81.02% placement rate. The five-year trend on these measures shows considerable variability due to accounting changes; thus, trends should be interpreted cautiously. The College's placement rate for completers decreased while the placement rate for leavers increased from the prior year. (Figures 11 – 12, pages 19, 20).

**6. Measure 4 Part 1 - College Preparatory Success Rate Report**

- **FTIC Students Failed Any Entry-Level Test:** Of Palm Beach Community College's FTIC students, 70.76% placed in college preparatory studies. This percentage is slightly lower than the prior year, but remains higher than the Florida Community College System average (Figure 13, page 21).
- **Percent Passed Highest level for College Preparatory Reading:** Palm Beach Community College achieved a passing rate of 68.20%, a percent that is slightly higher than last year. but remains somewhat below the Florida Community College System average (Figure 14, page 22).
- **Percent Passed Highest Level for College Preparatory Writing:** Palm Beach Community College achieved a passing rate of 65.99%, which is somewhat higher than the prior year and higher than the Florida Community College System average (Figure 15, page 23).
- **Percent Passed Highest Level for College Preparatory Math:** Palm Beach Community College achieved a passing rate of 53.18%, which represents an improvement from last year and is comparable to the Florida Community College System average (Figure 16, page 24).

**7. Measure 4 Part 2 - College Preparatory Enrollment, Retention and Success Report for Associate in Arts, Associate in Science, and Postsecondary Vocational Certificate Students**

- **Total Associate in Arts students:** Palm Beach Community College's retention rate (68.26%) and success rate (89.67%) both exceeded the Florida Community College System average (Figures 17 – 18, pages 25, 26).
- **Total Associate in Science students:** Palm Beach Community College substantially outperformed the Florida Community College System in both retention

(69.88%) and success rates (90.36%) in this year's report (Figures 19 – 20, pages 27, 28).

- **Total Postsecondary Vocational Certificate students:** Due to the small number of students in postsecondary vocational certificate programs included in the accountability report study, the retention and success rates of the College fluctuate substantially. In this year's report, the PBCC retention rate was 100.00% and the success rate was 100.00% (Figures 21 – 22, pages 29, 30).

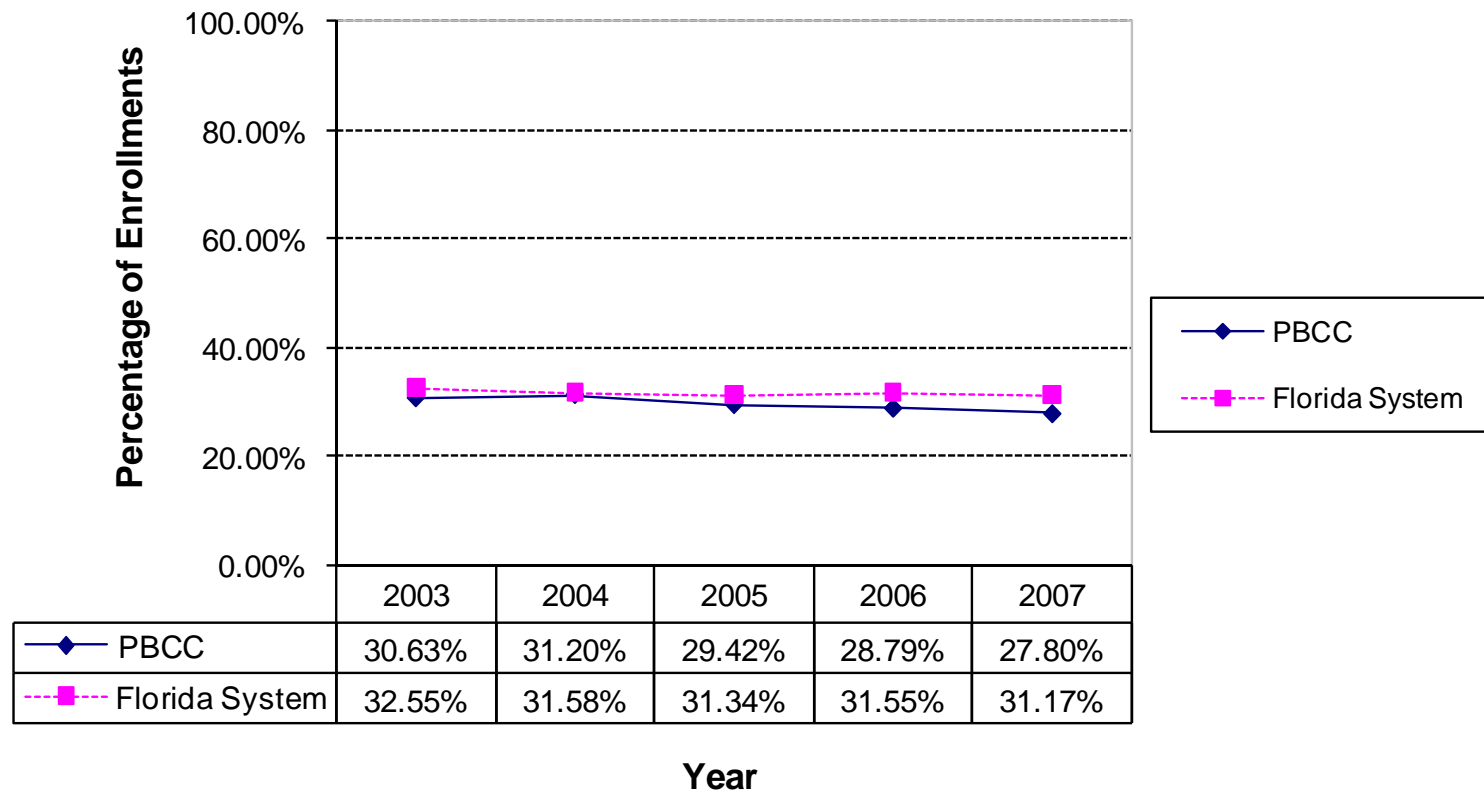
#### **8. Measure 5 - CLAST Performance Report**

- Results include students who attempted the CLAST or had a CLAST alternative. The performance of Palm Beach Community College in passing each of the four subtests and all four subtests combined was similar to the Florida Community College System average. The passing rate for individual subtests ranged from 97.56% to 98.72% and all four tests combined was 95.26% (Figures 23 – 27, pages 31-35).

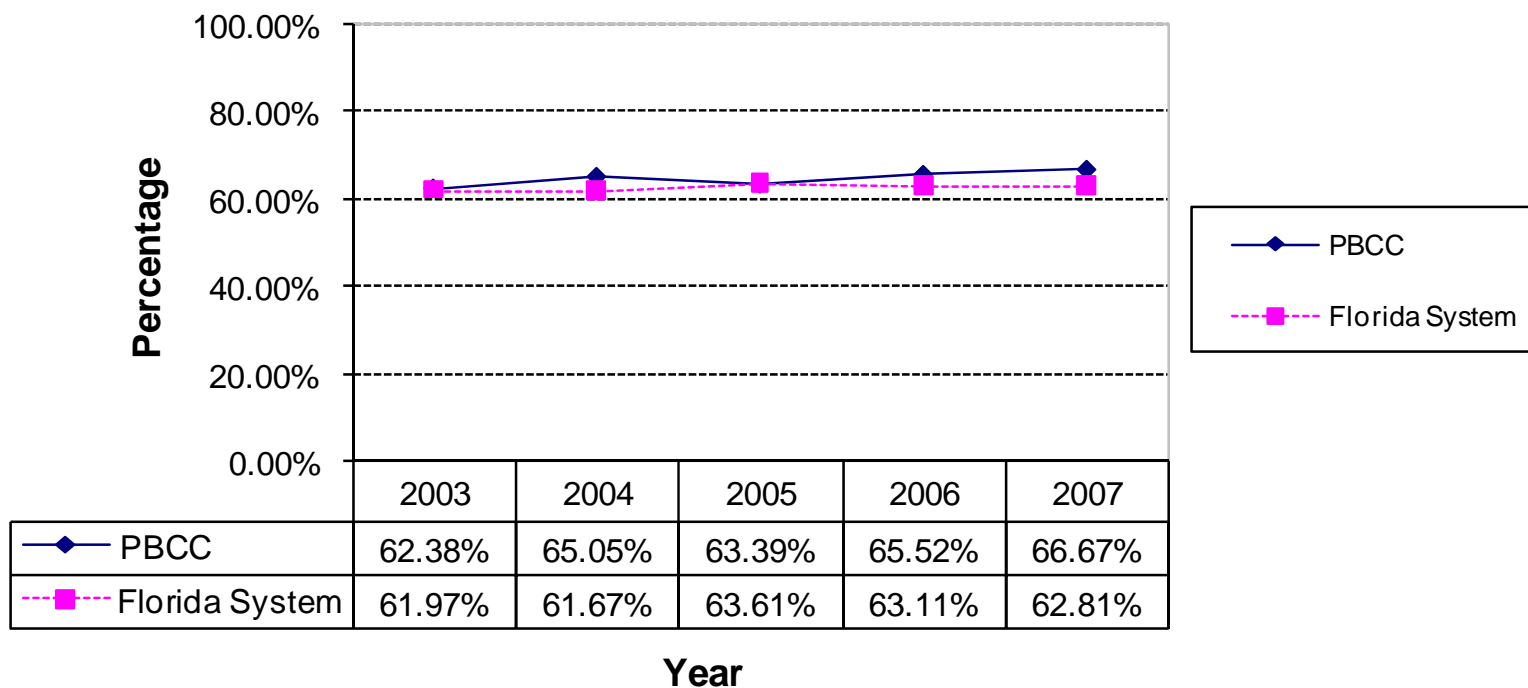
### **CONCLUSION**

Palm Beach Community College continues its excellent results on the accountability measures as established by the State of Florida. Throughout these measures, student performance while at PBCC continues to reach high levels of performance. This high level of performance carries through as students enter the state university system as evidenced by their GPA once they attain junior status. In addition, our high placement rates in career programs indicate that our students are able to enter their chosen profession once they complete a career program at PBCC. A possible area of improvement is to enroll a higher percentage of the county's prior high school graduates.

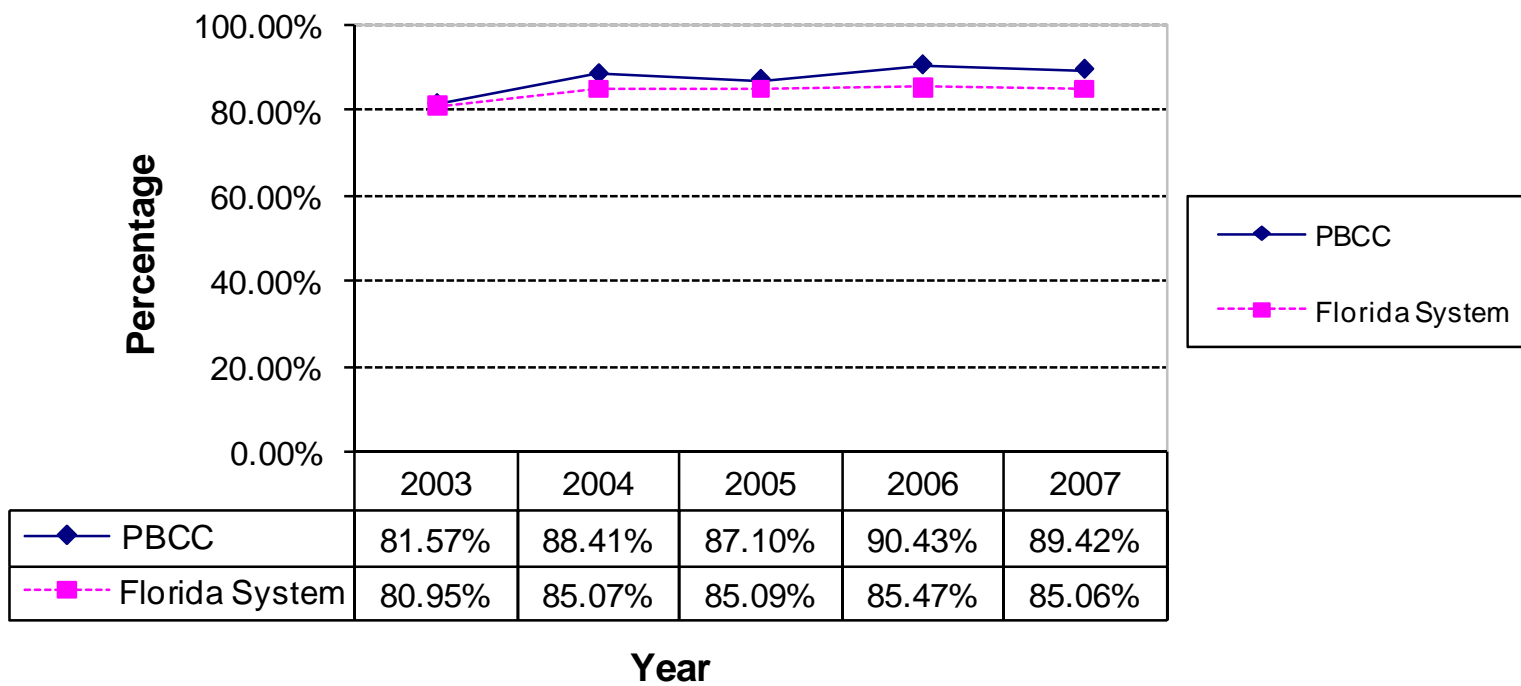
**Figure 1**  
**Accountability Outcome Measure 1 Part 1**  
**Comparison of Prior Year High School Enrolled the Following Year between**  
**PBCC and Florida System**  
**Enrollment Report - Total Students (2003-2007)**



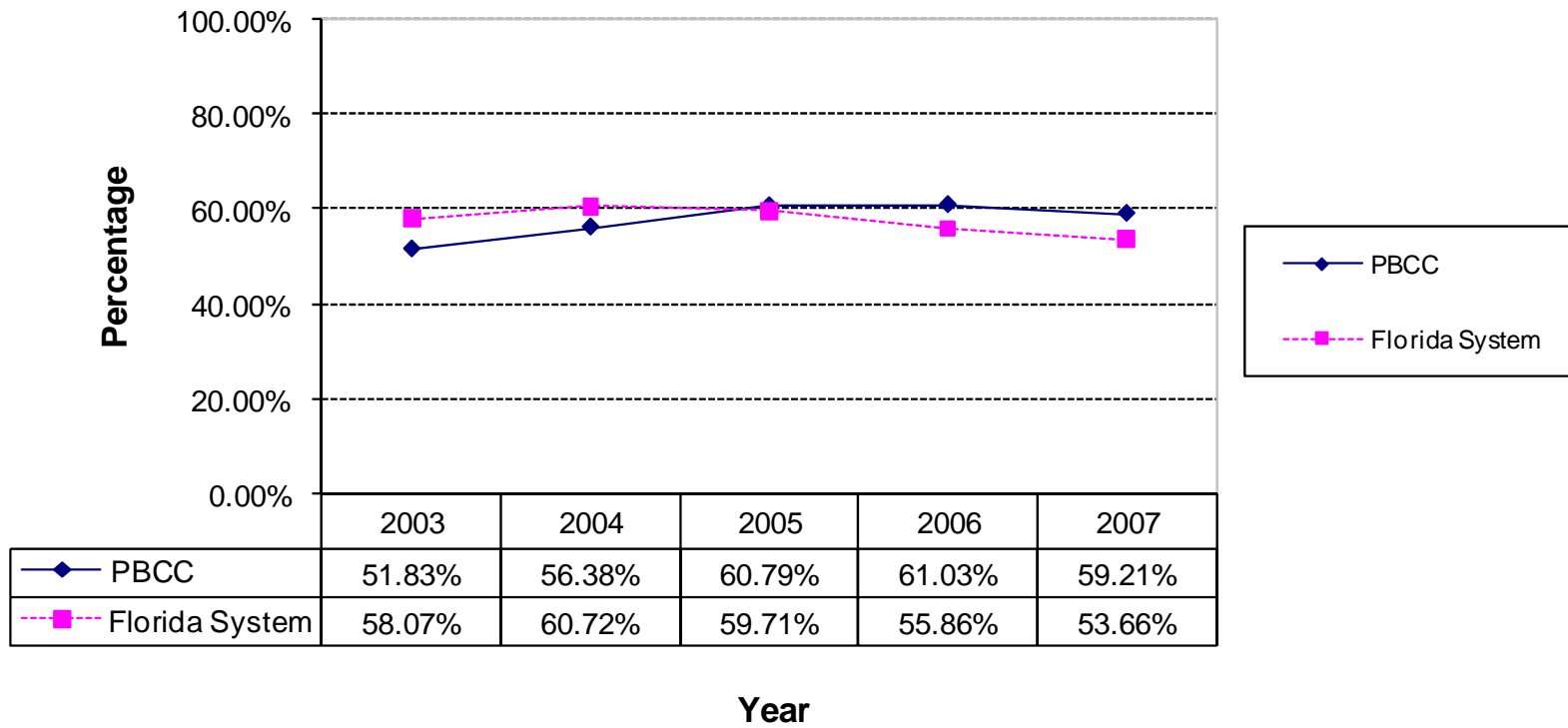
**Figure 2**  
**Accountability Outcome Measure 1 Part 2**  
**Comparison of Retention Rate Report for Total**  
**Associate in Arts Students between PBCC and Florida System**  
**Total Students (2003-2007)**



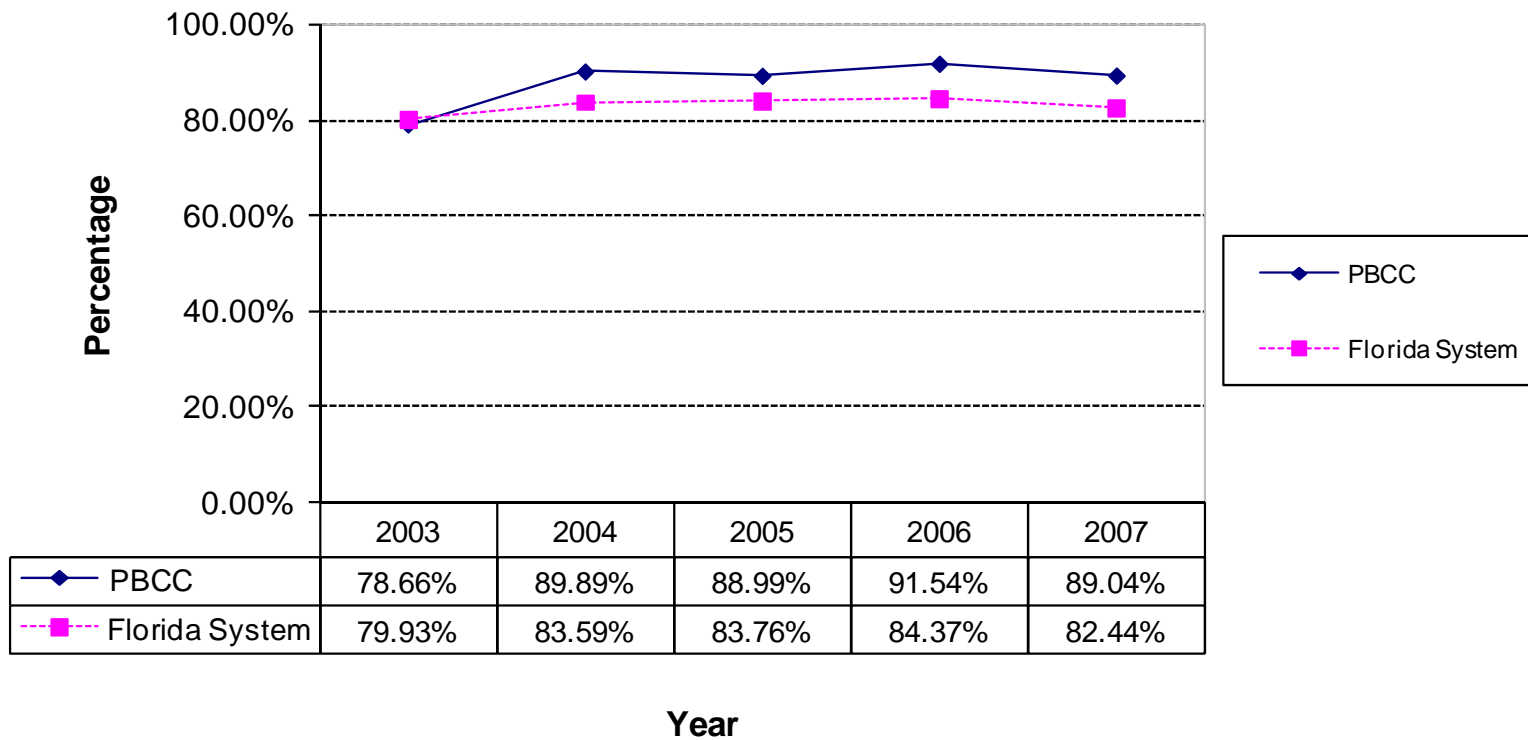
**Figure 3**  
**Accountability Outcome Measure 1 Part 2**  
**Comparison of Success Rate Report for Total**  
**Associate in Arts Students between PBCC and Florida System**  
**Total Students (2003-2007)**



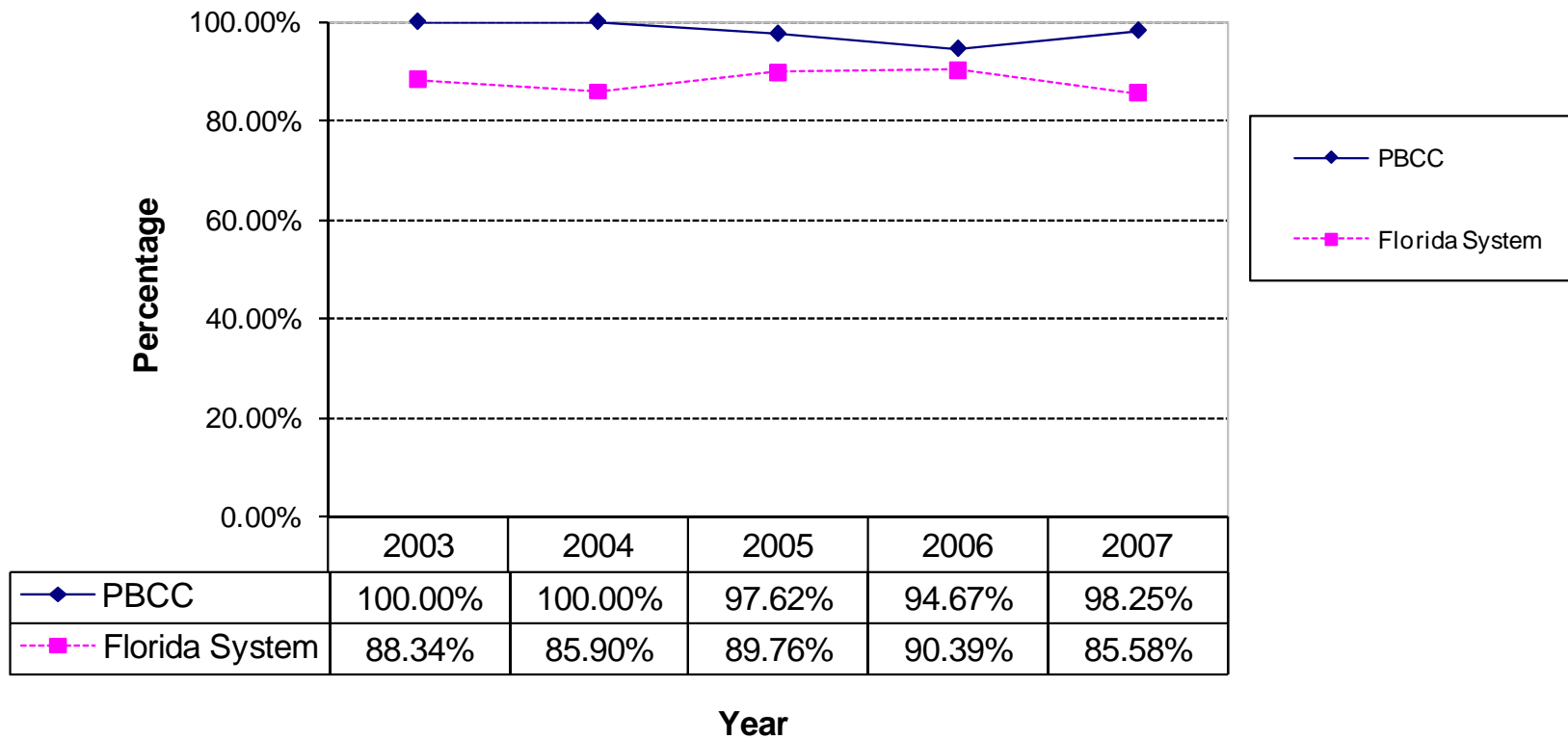
**Figure 4**  
**Accountability Outcome Measure 1 Part 2**  
**Comparison of Retention Rate Report for Total**  
**Associate in Science Students between PBCC and Florida System**  
**Total Students (2003-2007)**



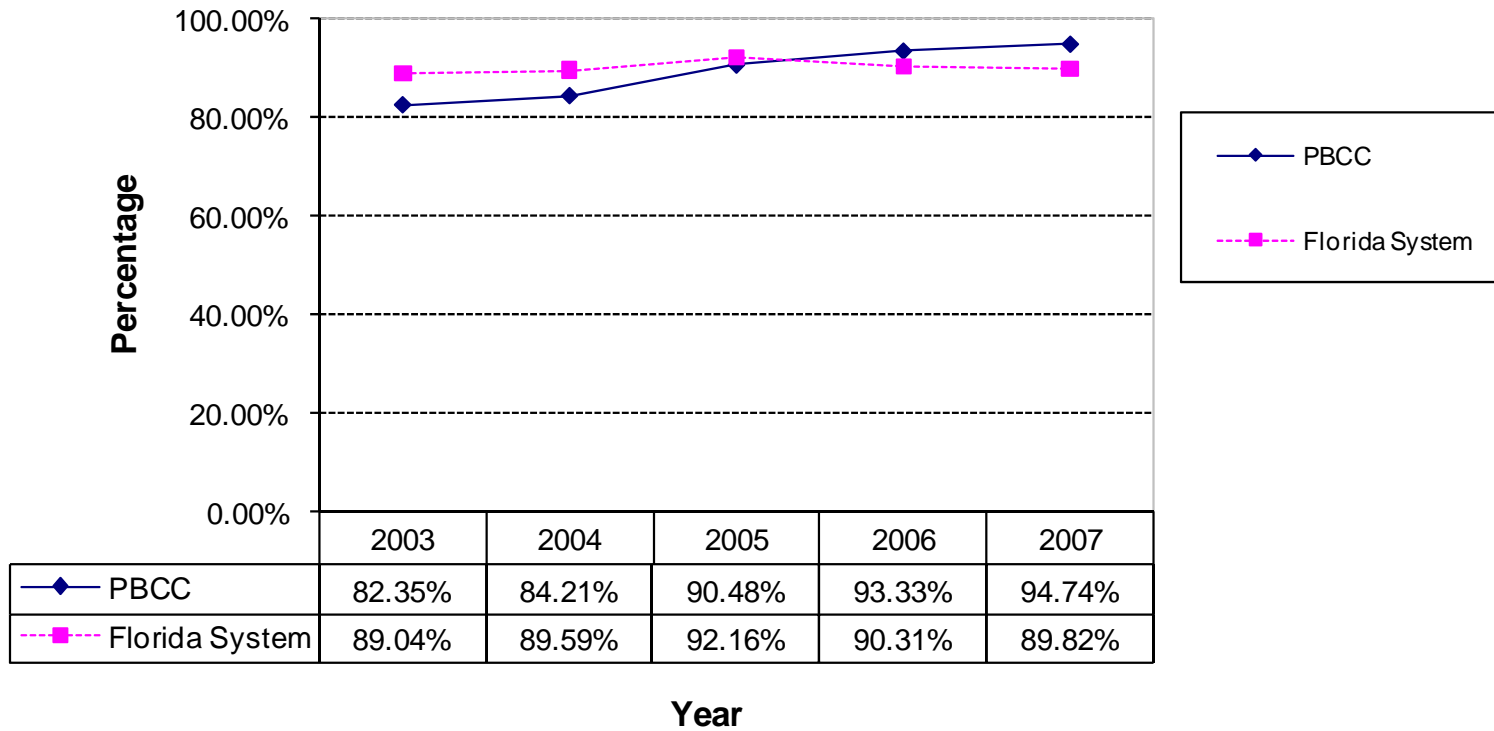
**Figure 5**  
**Accountability Outcome Measure 1 Part 2**  
**Comparison of Success Rate Report for Total**  
**Associate in Science Students between PBCC and Florida System**  
**Total Students (2003-2007)**



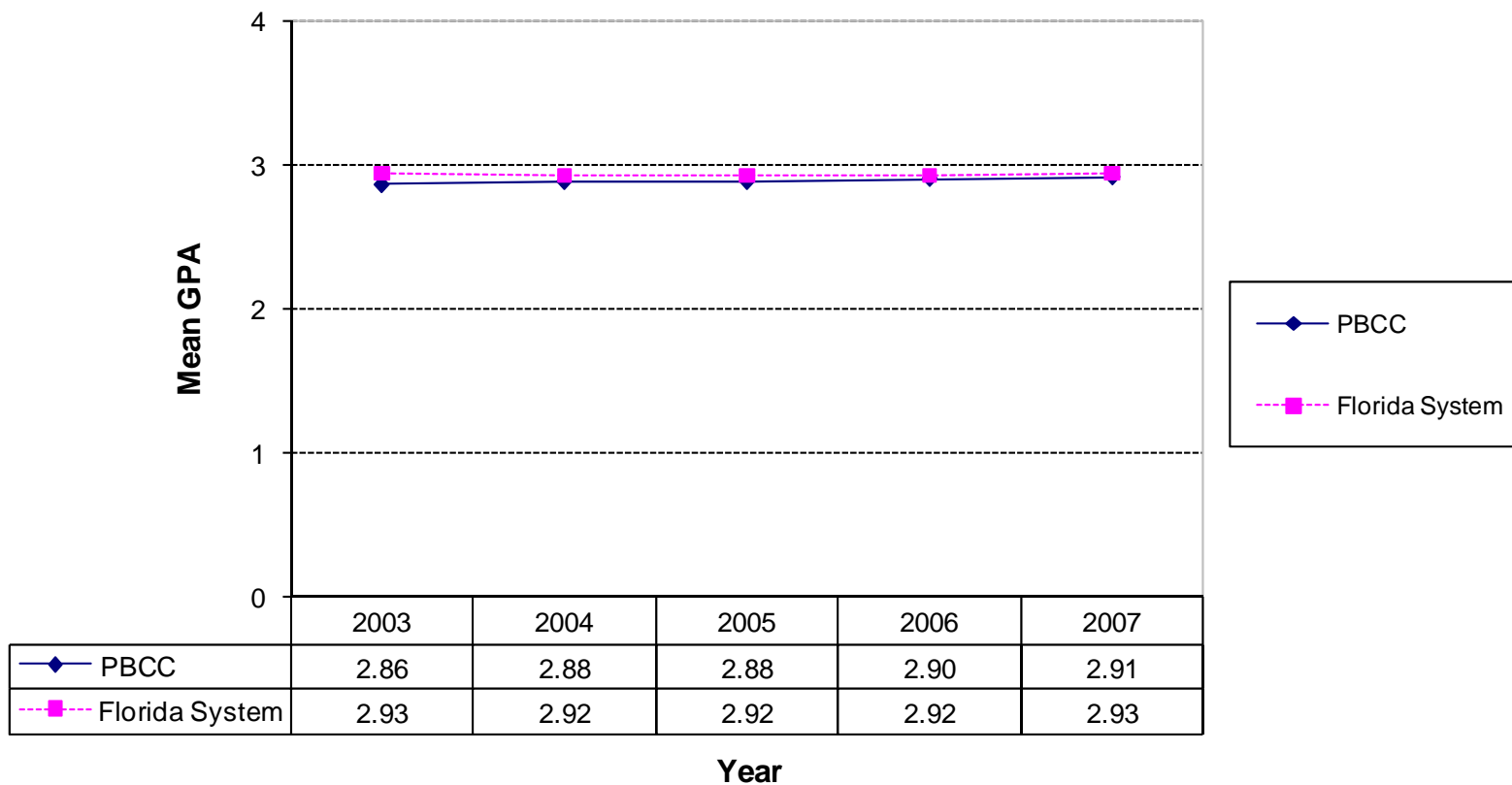
**Figure 6**  
**Accountability Outcome Measure 1 Part 2**  
**Comparison of Retention Rate Report for Total**  
**Postsecondary Vocational Certificate Students**  
**between PBCC and Florida System**  
**Total Students (2003-2007)**



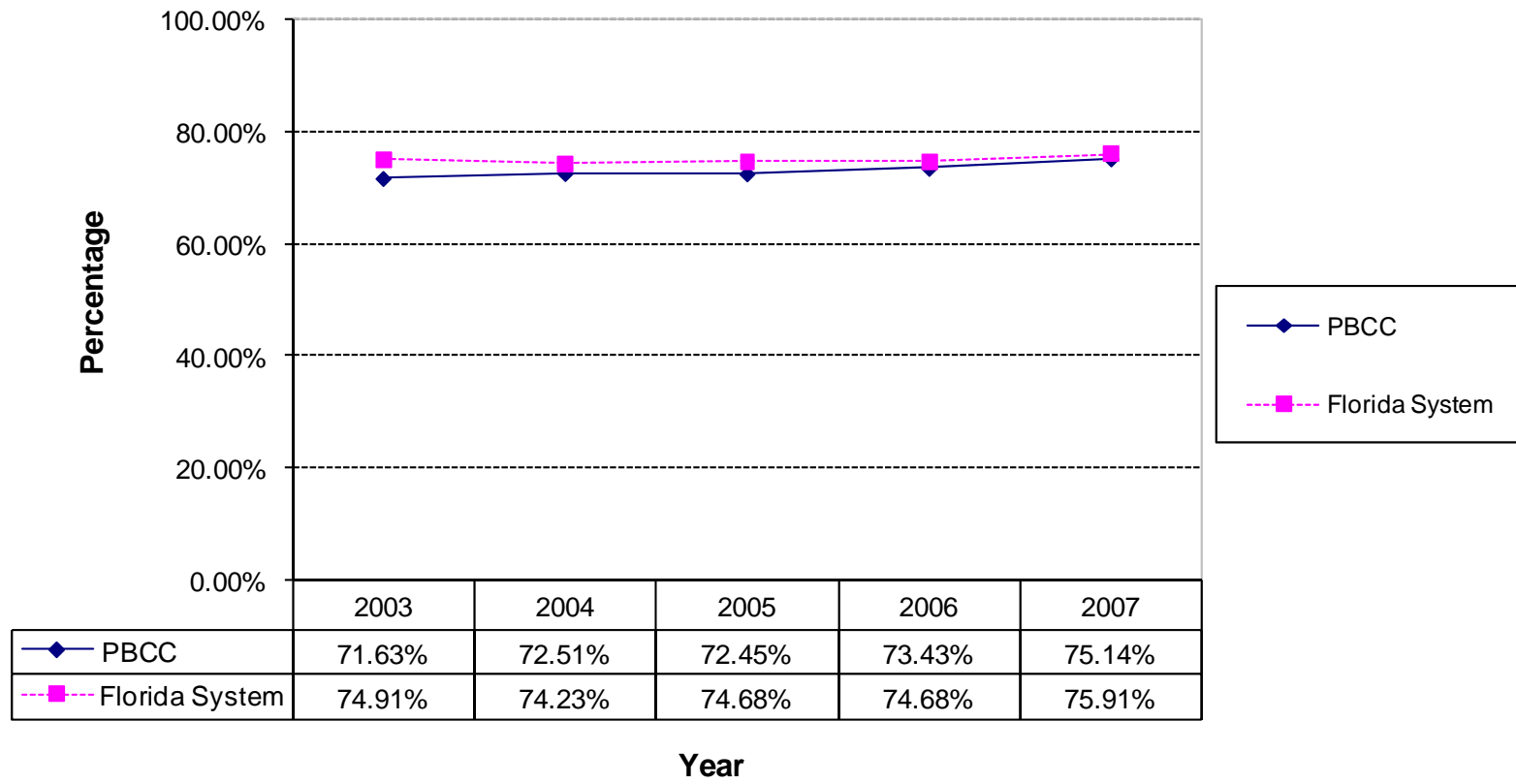
**Figure 7**  
**Accountability Outcome Measure 1 Part 2**  
**Comparison of Success Rate Report for Total**  
**Postsecondary Vocational Certificate Students**  
**between PBCC and Florida System**  
**Total Students (2003-2007)**



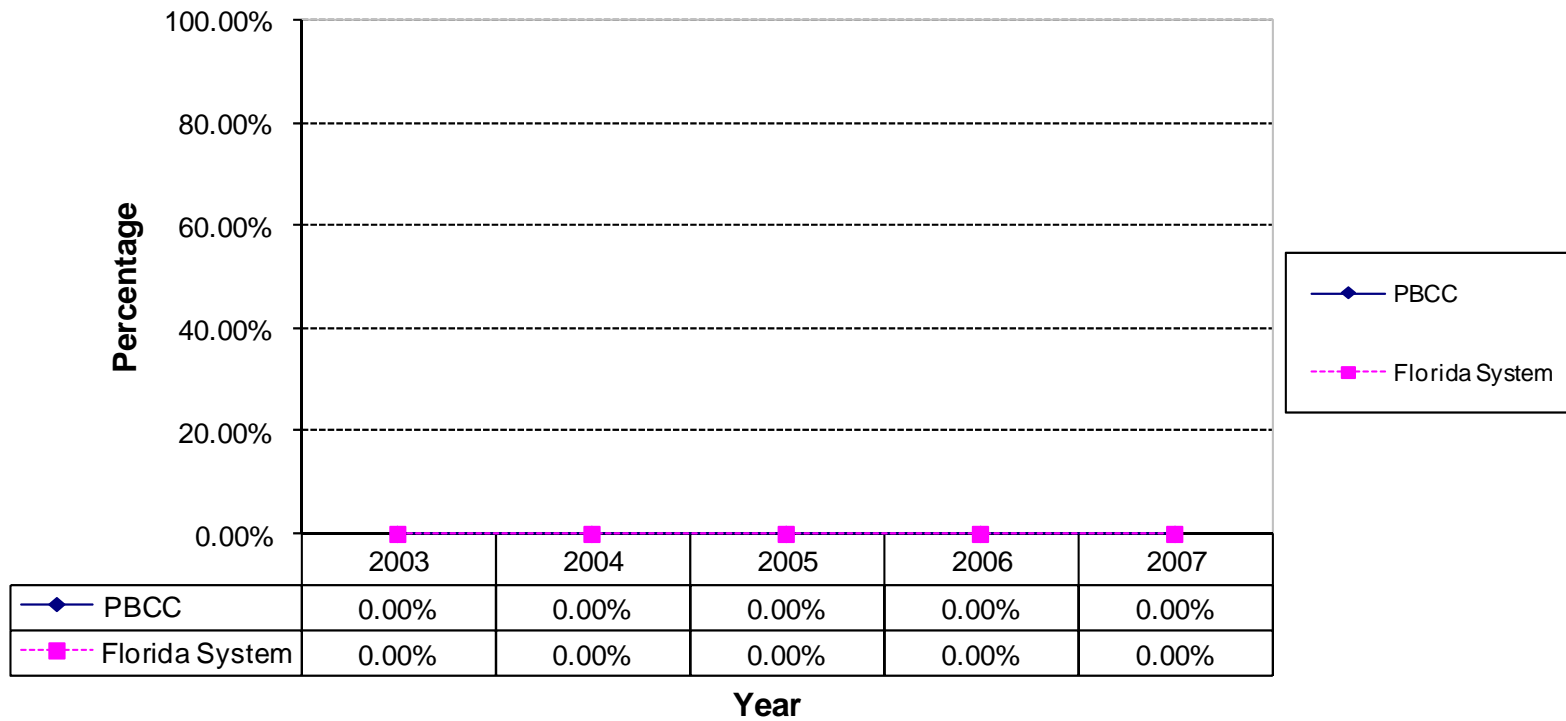
**Figure 8**  
**Accountability Outcome Measure 2**  
**Comparison of Associate in Arts Degree Transfer Performance for Mean GPA**  
**between PBCC and Florida System**  
**Total Students (2003-2007)**



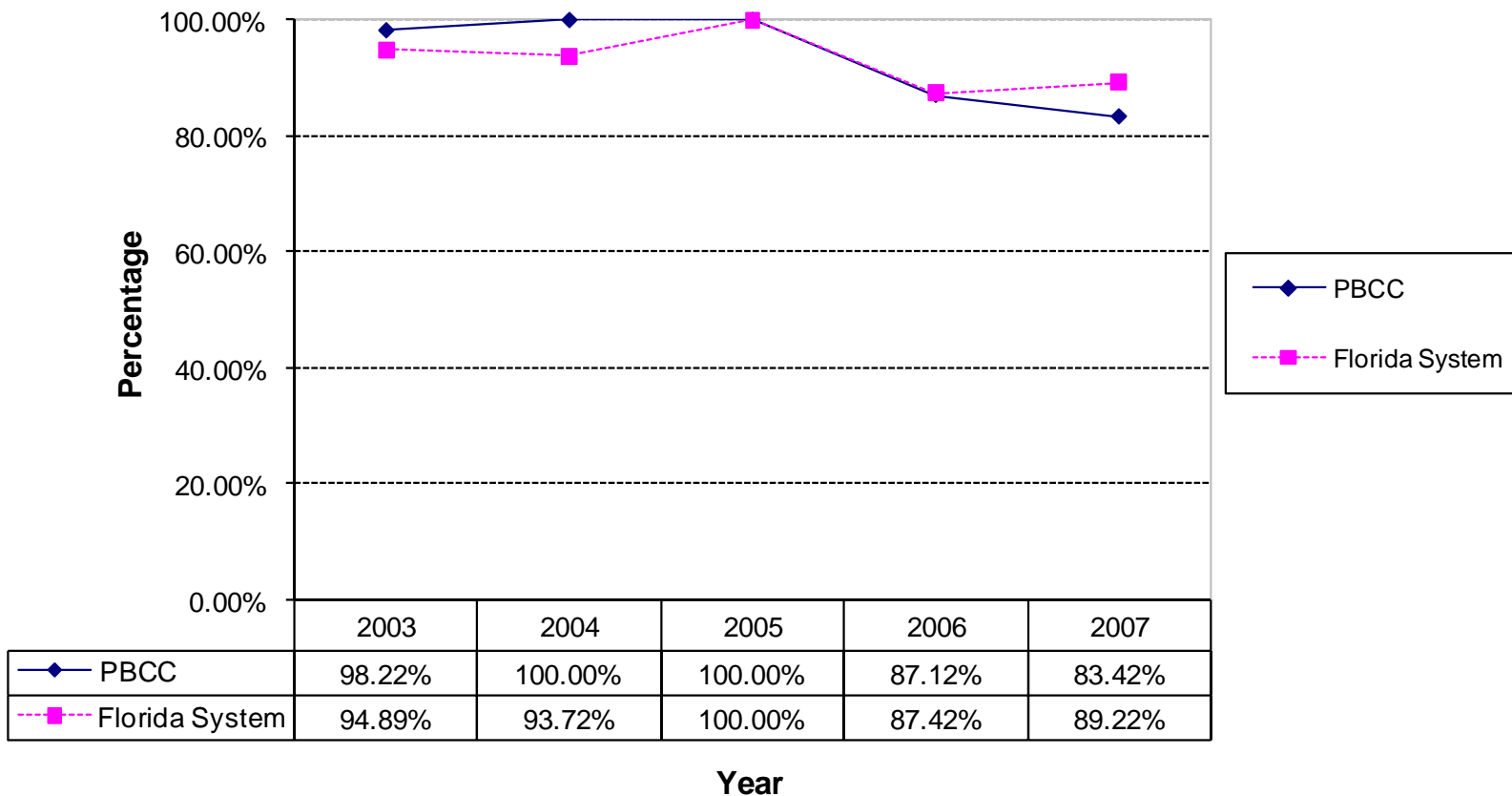
**Figure 9**  
**Accountability Outcome Measure 2**  
**Comparison of Associate in Arts Degree Transfer Performance for Percent**  
**with GPAs at or above 2.5**  
**between PBCC and Florida System**  
**Total Students (2003-2007)**



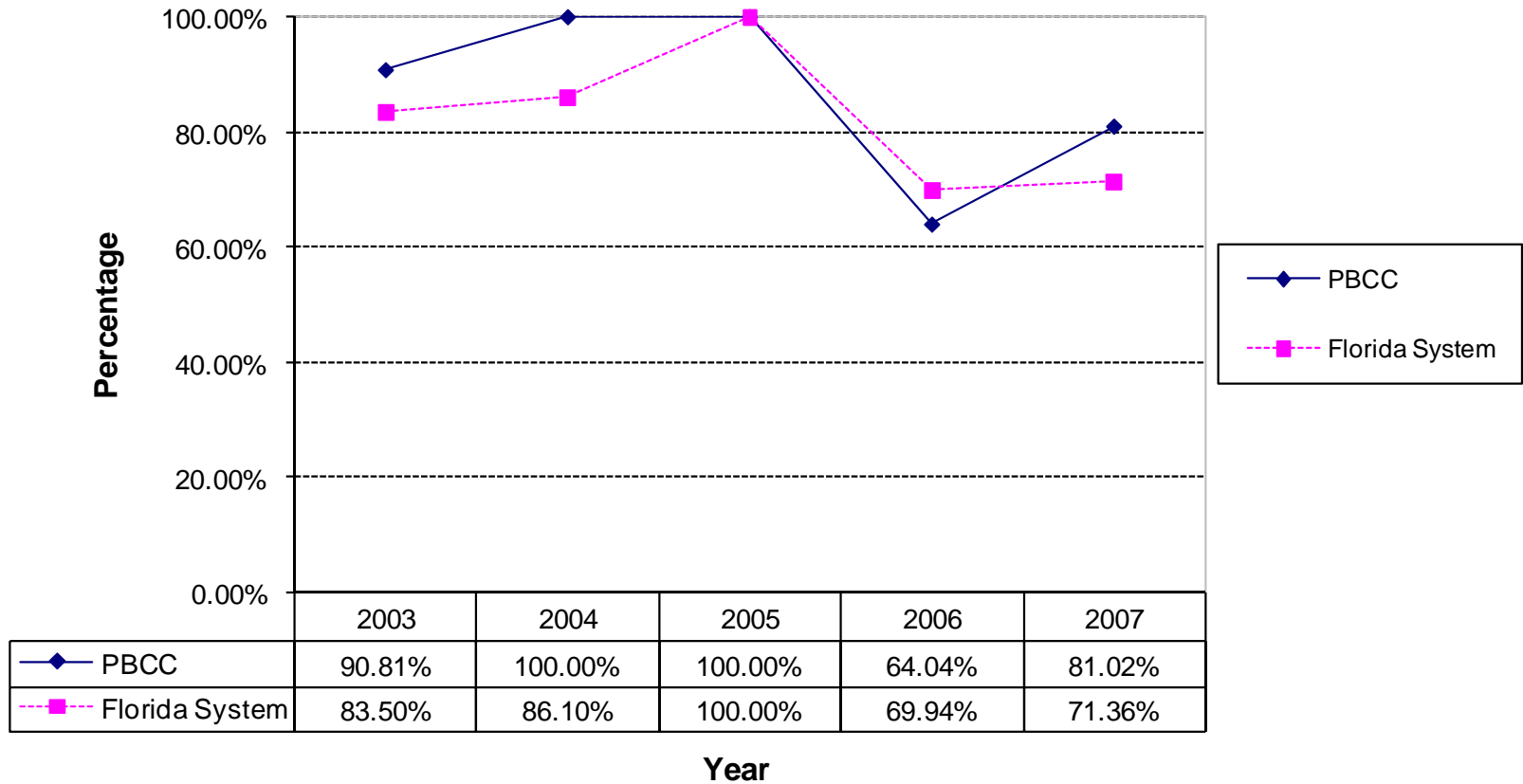
**Figure 10**  
**Accountability Outcome Measure 3 Part 1**  
**Comparison of State Licensure Passing Rate Report**  
**between PBCC and Florida System**  
**(2003, 2004, 2005, 2006 and 2007 DATA NOT AVAILABLE)**



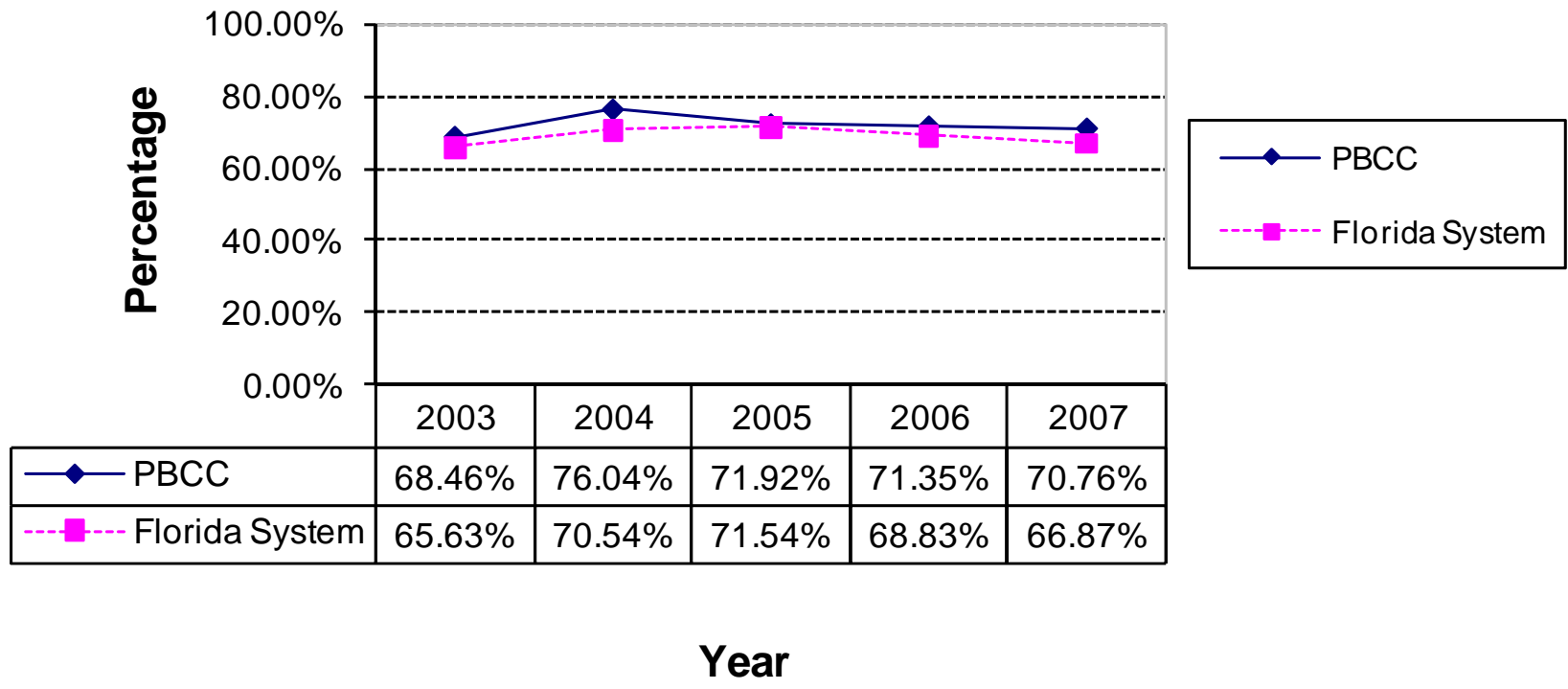
**Figure 11**  
**Accountability Outcome Measure 3 Part 2**  
**Comparison of Vocational Placement Rates for Completers**  
**between PBCC and Florida System**  
**Total Students (2003-2007)**



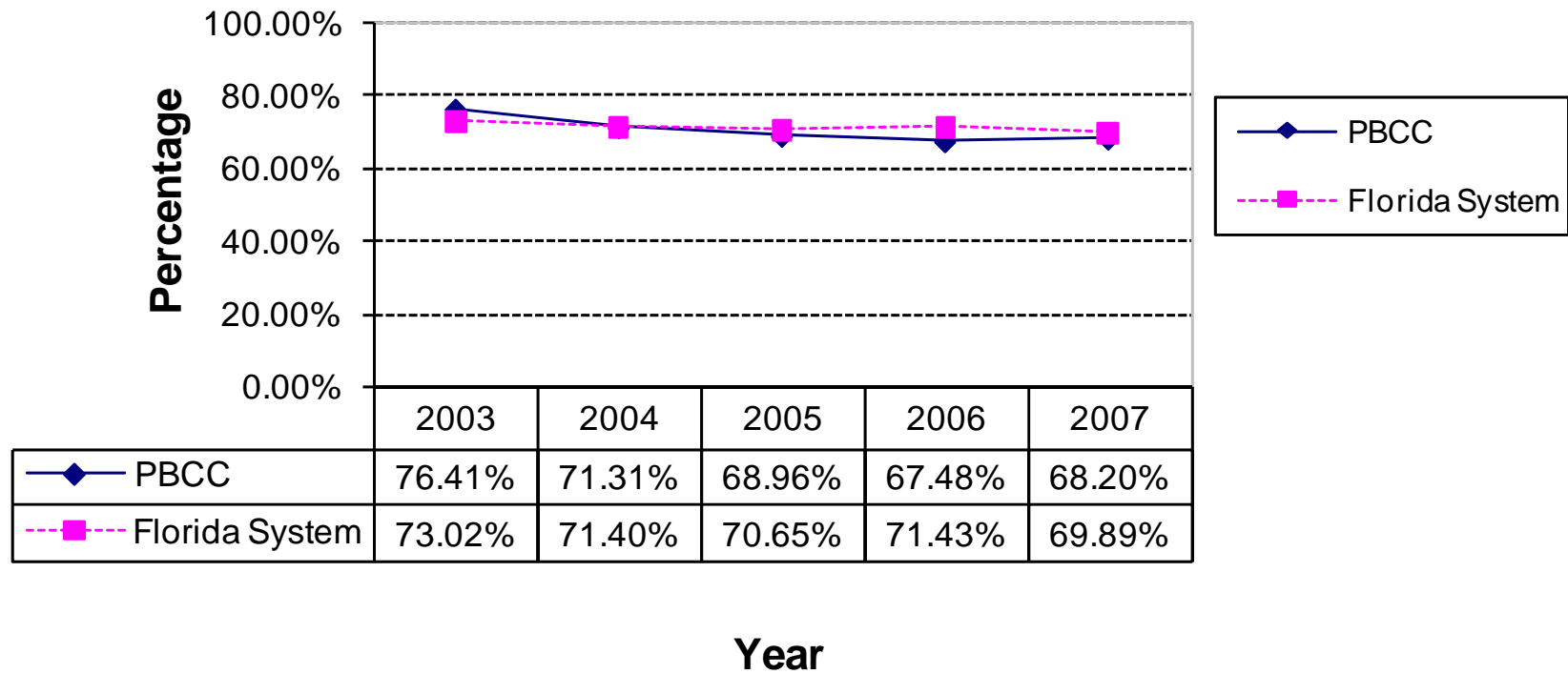
**Figure 12**  
**Accountability Outcome Measure 3 Part 2**  
**Comparison of Vocational Placement Rates for Leavers**  
**between PBCC and Florida System**  
**Total Students (2003-2007)**



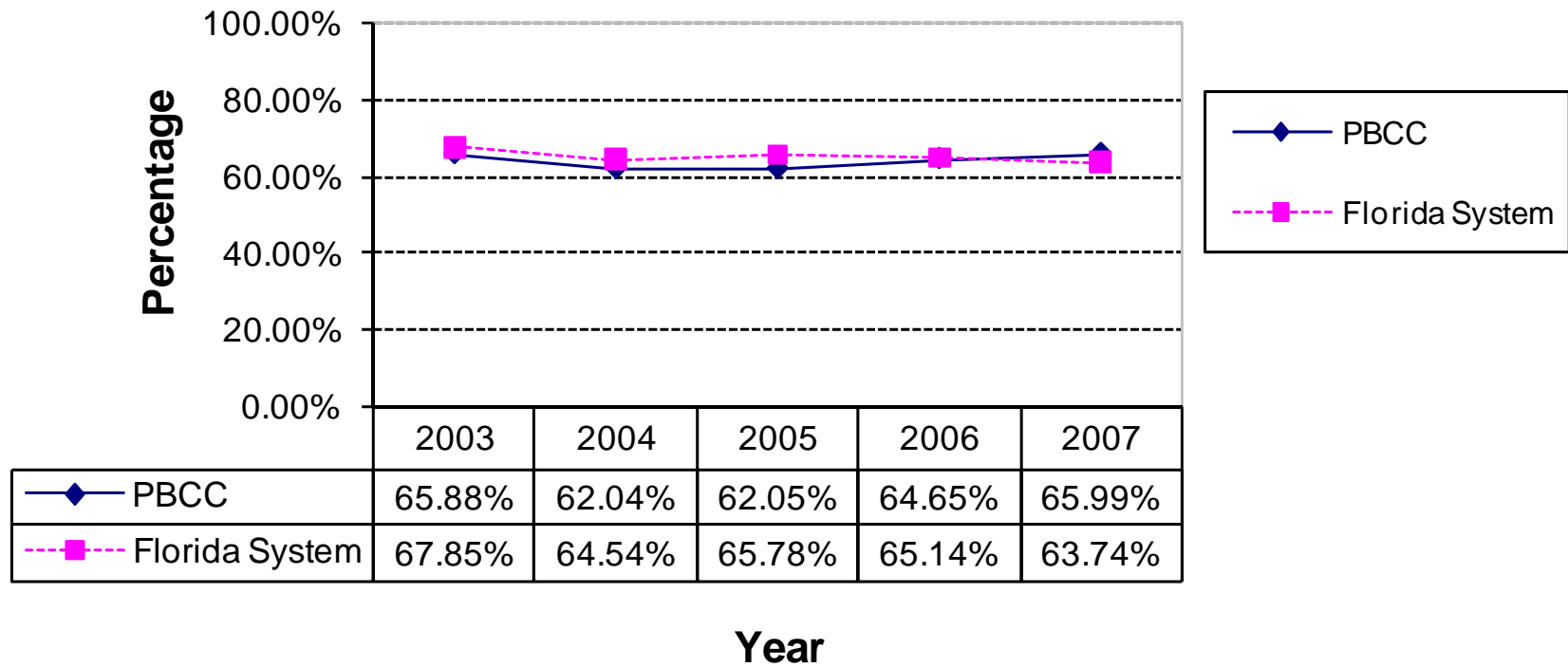
**Figure 13**  
**Accountability Outcome Measure 4 Part 1**  
**Comparison of FTIC Students Failed Any Entry-Level Test**  
**between PBCC and Florida System**  
**Total Students (2003-2007)**



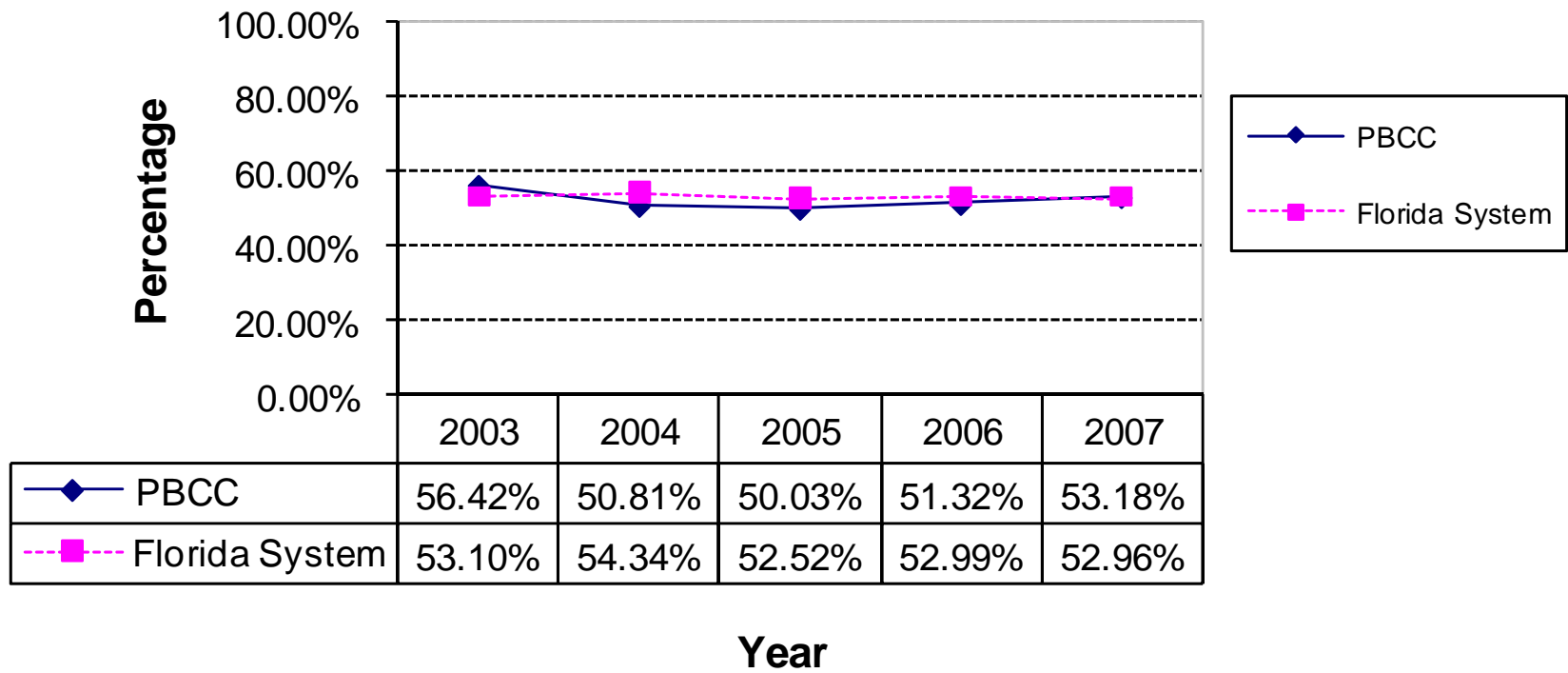
**Figure 14**  
**Accountability Outcome Measure 4 Part 1**  
**Comparison of Percent Passed Highest Level for College Preparatory**  
**Reading between PBCC and Florida System**  
**Total Students (2003-2007)**



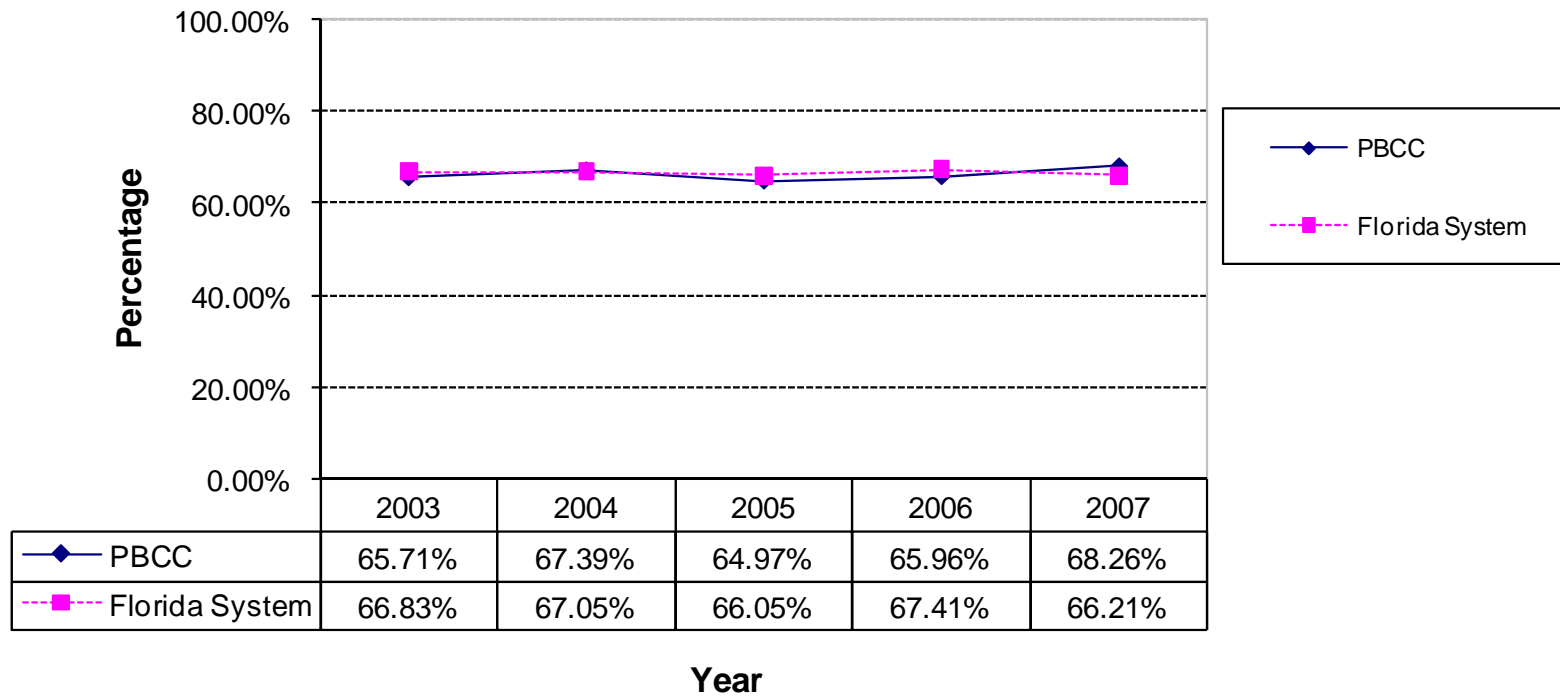
**Figure 15**  
**Accountability Outcome Measure 4 Part 1**  
**Comparison of Percent Passed Highest Level for College Preparatory Writing**  
**between PBCC and Florida System**  
**Total Students (2003-2007)**



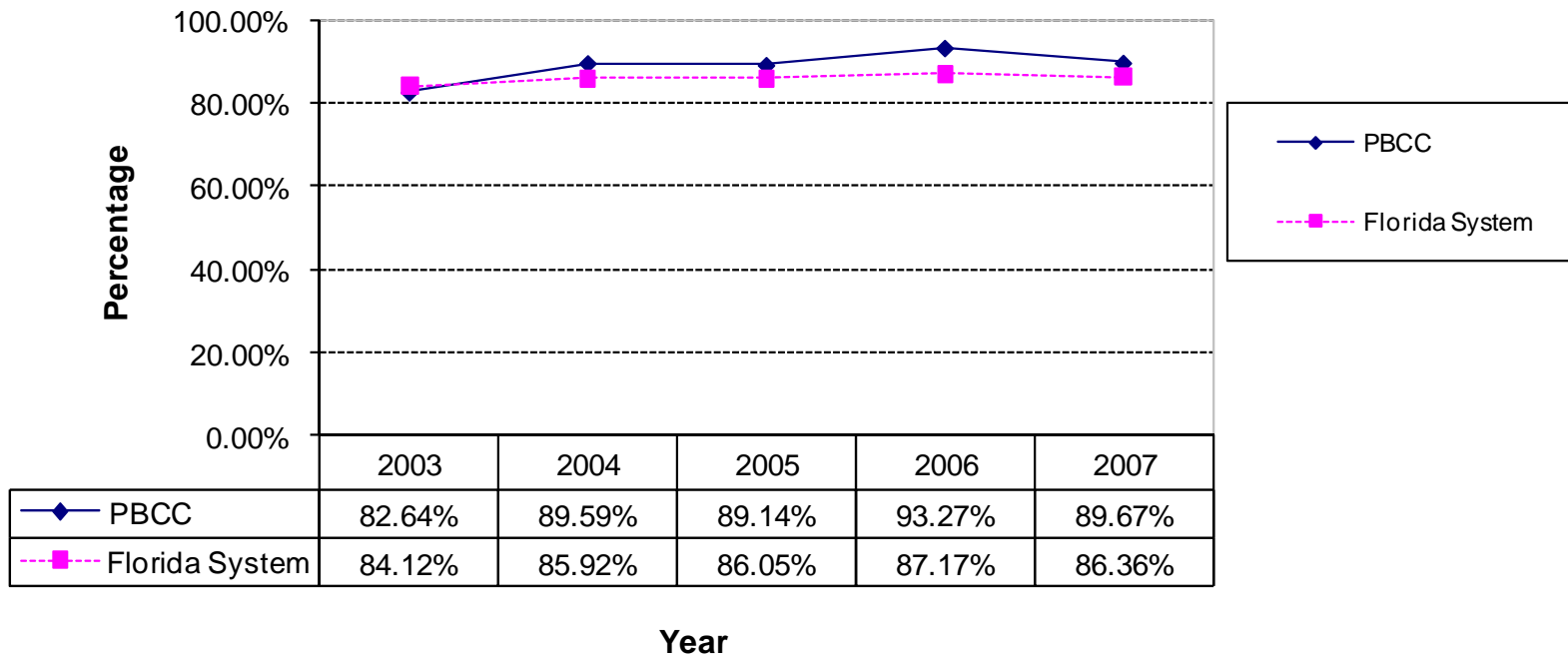
**Figure 16**  
**Accountability Outcome Measure 4 Part 1**  
**Comparison of Percent Passed Highest Level for College Preparatory**  
**Math between PBCC and Florida System**  
**Total Students (2003-2007)**



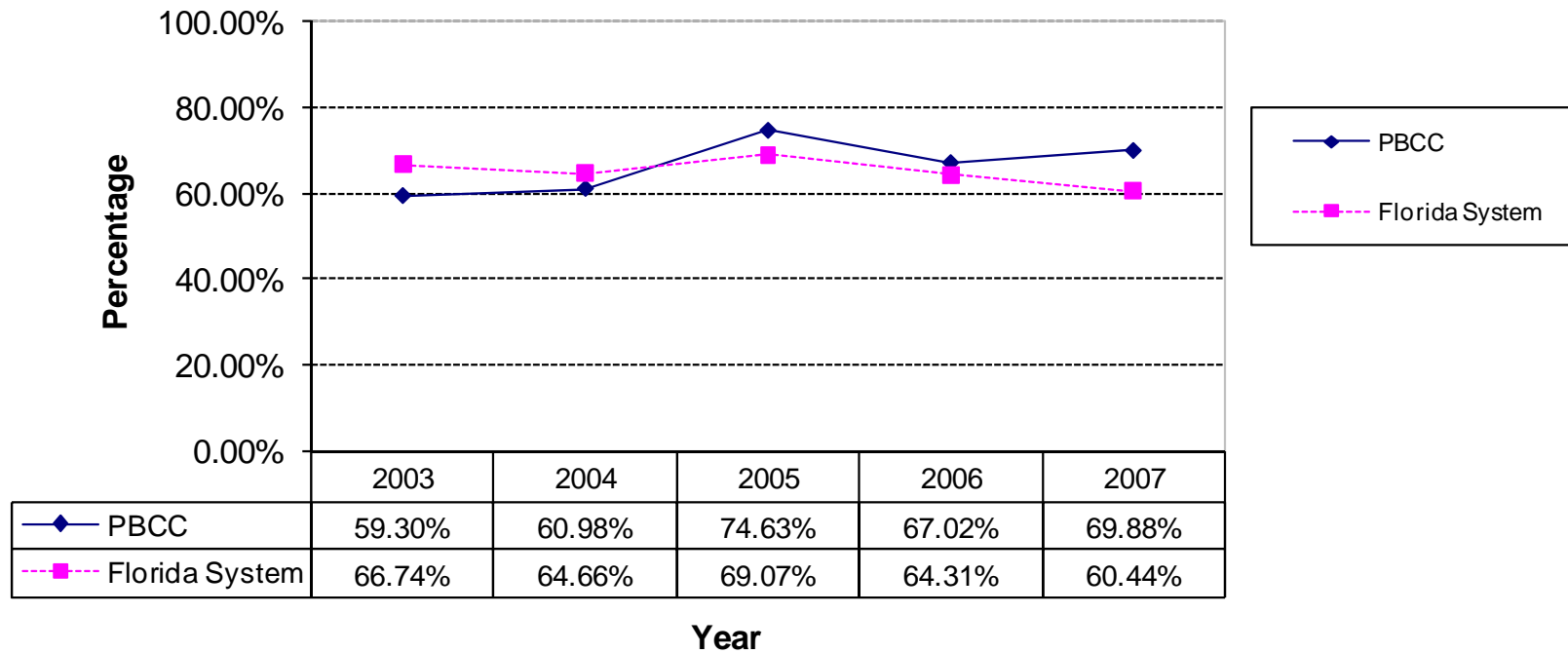
**Figure 17**  
**Accountability Outcome Measure 4 Part 2**  
**Comparison of College Preparatory Retention Rate Report for Associate in Arts**  
**Students**  
**between PBCC and Florida System**  
**Total Students (2003-2007)**



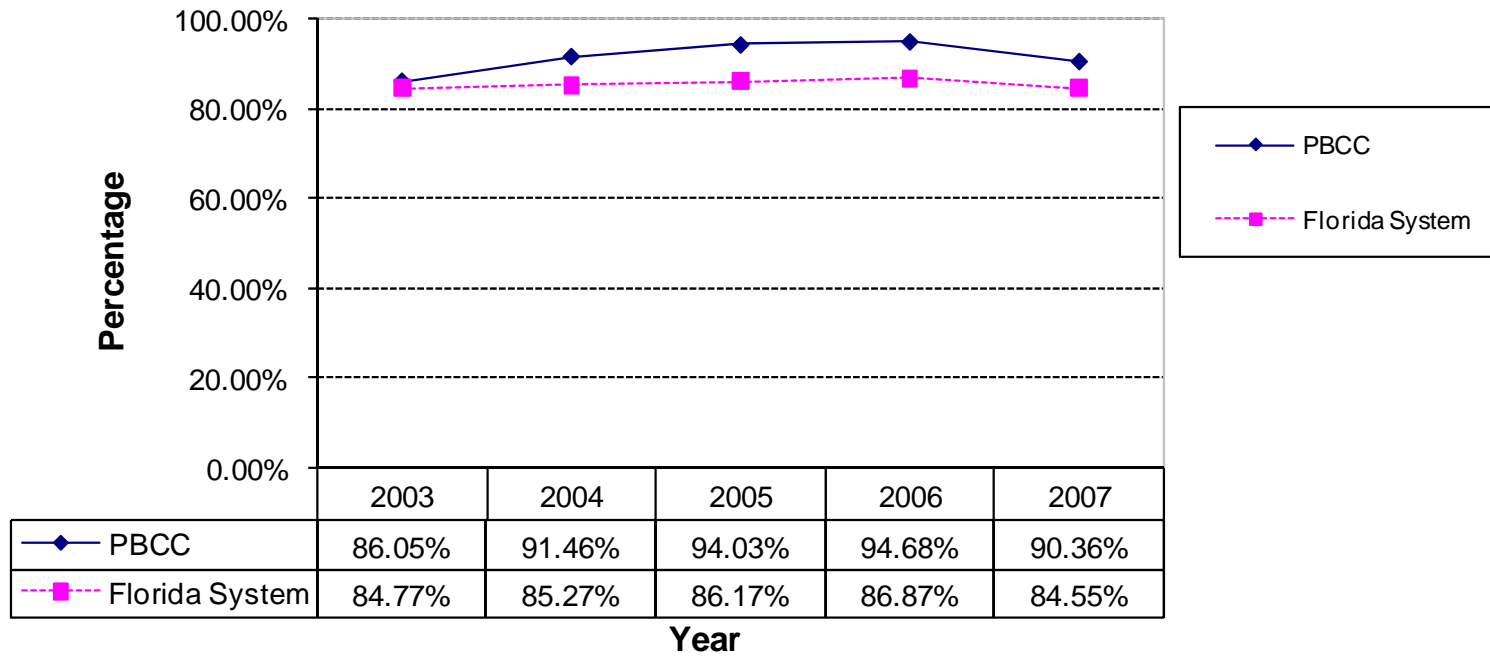
**Figure 18**  
**Accountability Outcome Measure 4 Part 2**  
**Comparison of College Preparatory Success Rate Report for**  
**Associate in Arts Students**  
**between PBCC and Florida System**  
**Total Students (2003-2007)**



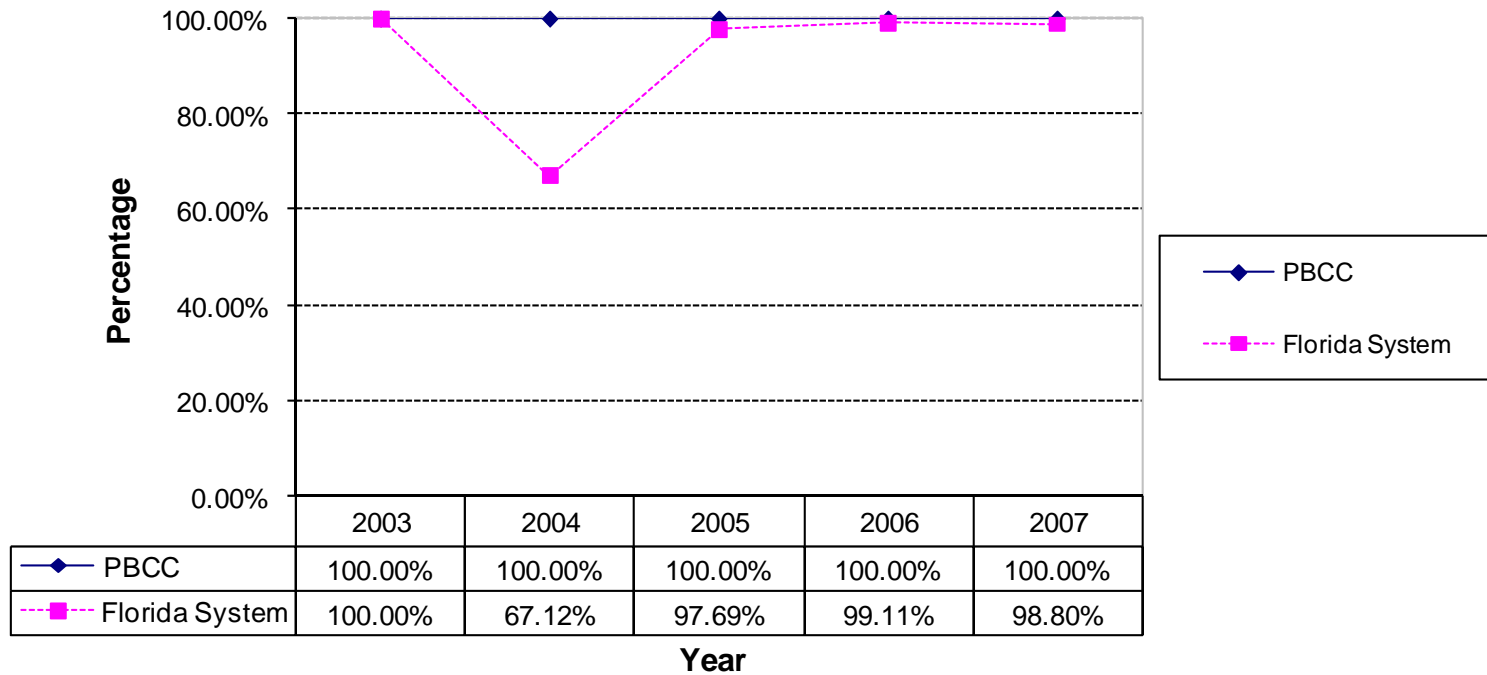
**Figure 19**  
**Accountability Outcome Measure 4 Part 2**  
**Comparison of College Preparatory Retention Rate Report**  
**for Associate in Science Students**  
**between PBCC and Florida System**  
**Total Students (2003-2007)**



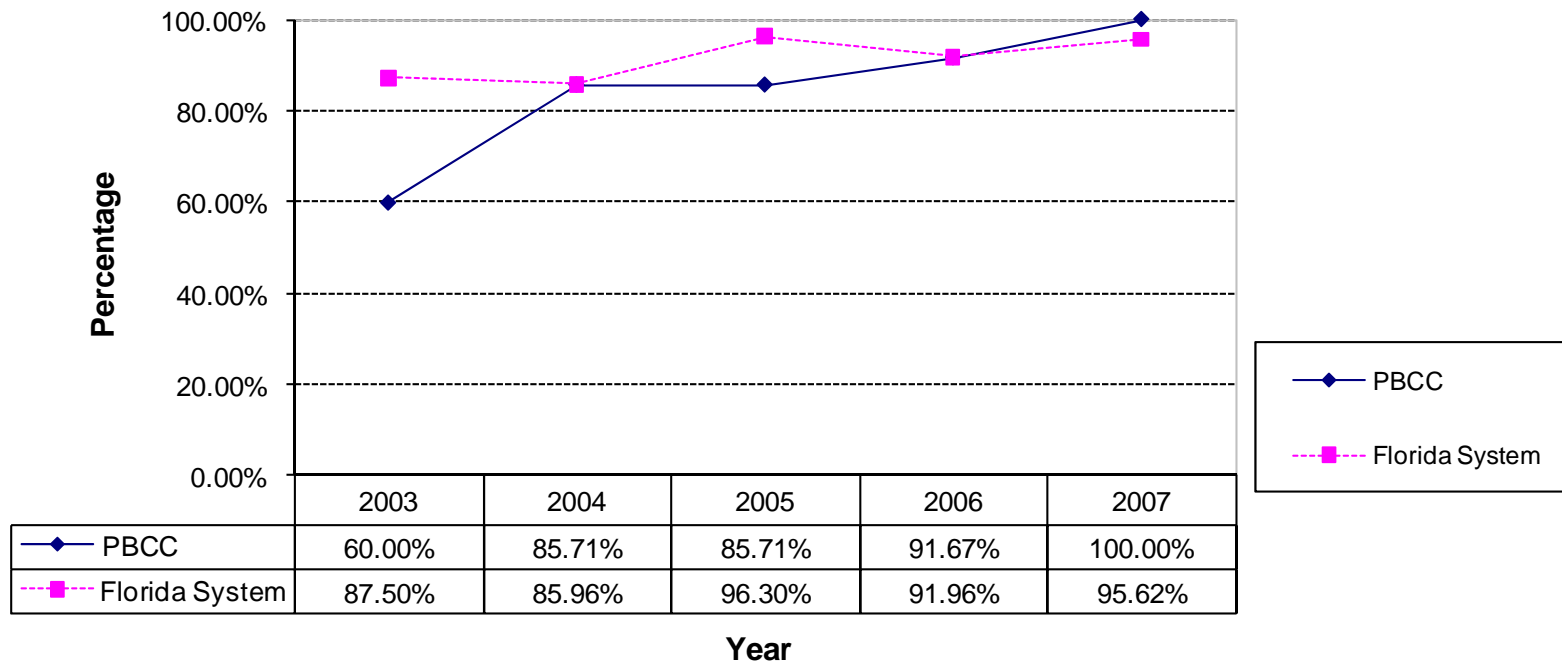
**Figure 20**  
**Accountability Outcome Measure 4 Part 2**  
**Comparison of College Preparatory Success Rate Report**  
**for Associate in Science Students**  
**between PBCC and Florida System**  
**Total Students (2003-2007)**



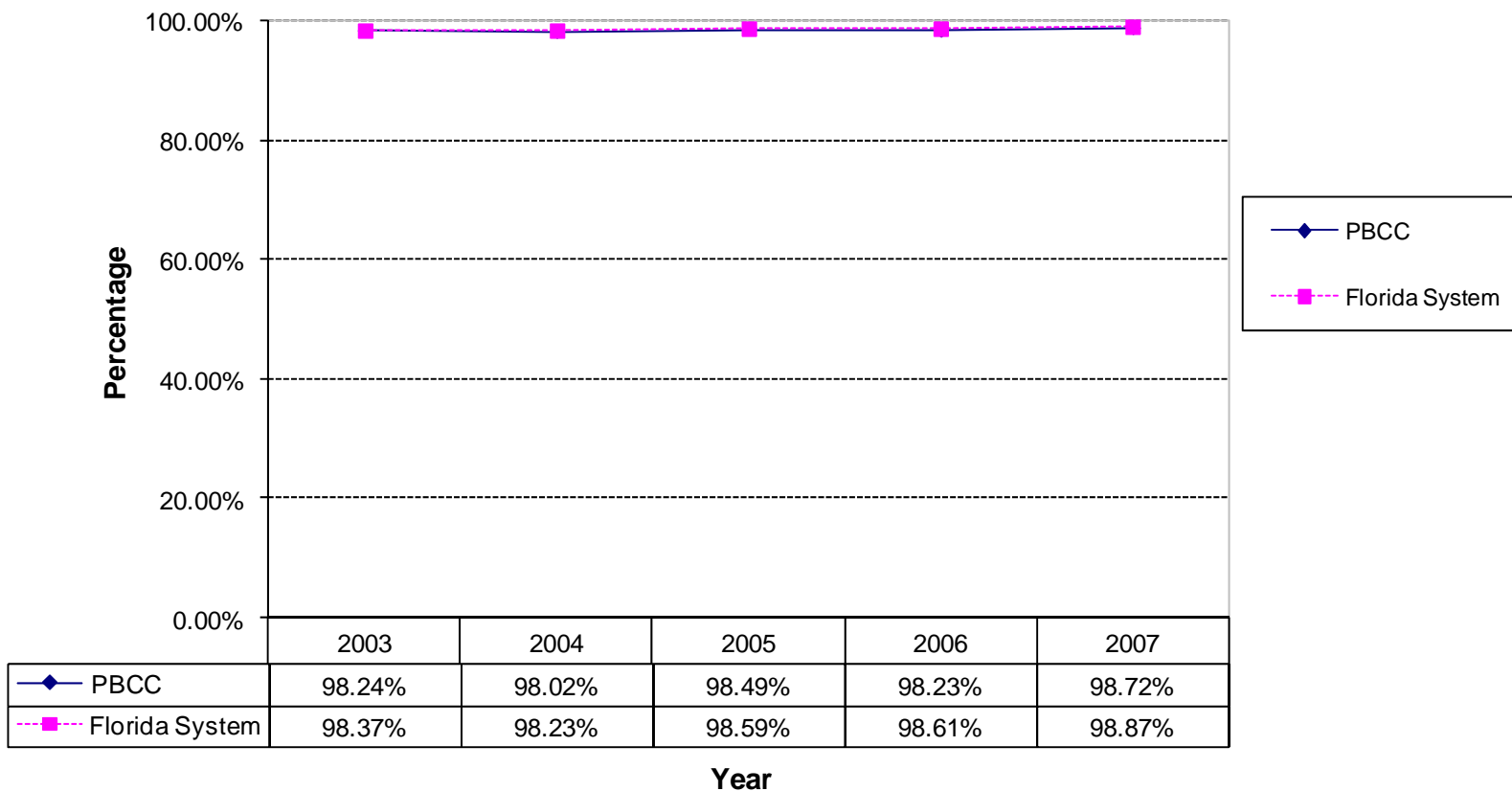
**Figure 21**  
**Accountability Outcome Measure 4 Part 2**  
**Comparison of College Preparatory Retention Rate Report for Postsecondary Vocational**  
**Certificate Students**  
**between PBCC and Florida System**  
**Total Students (2003-2007)**



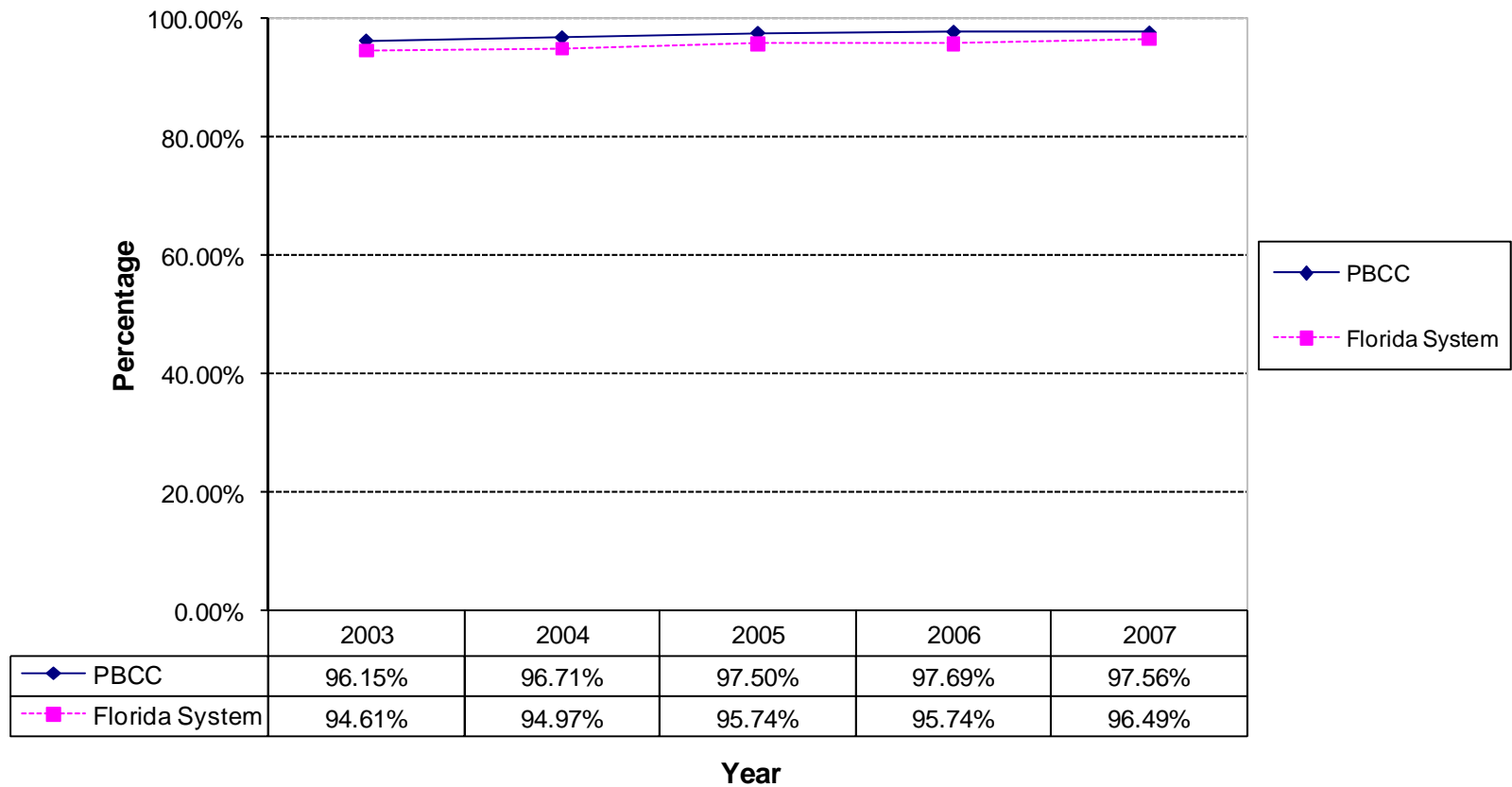
**Figure 22**  
**Accountability Outcome Measure 4 Part 2**  
**Comparison of College Preparatory Success Rate Report**  
**for Postsecondary Vocational Certificate Students**  
**between PBCC and Florida System**  
**Total Students (2003-2007)**



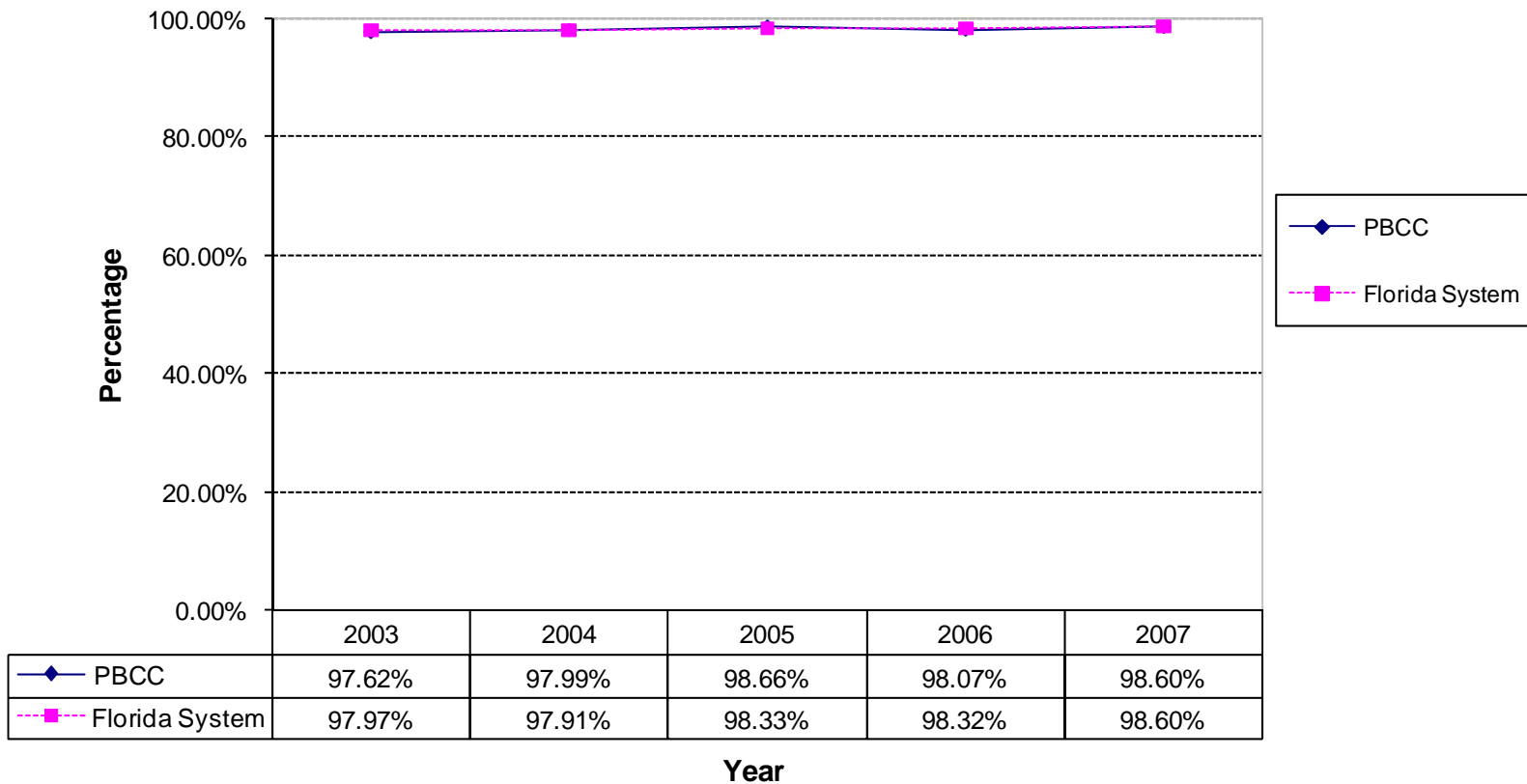
**Figure 23**  
**Accountability Outcome Measure 5**  
**Comparison of CLAST Performance Report For Essay Subtest**  
**between PBCC and Florida System**  
**Total Students Who Attempted the CLAST or Had a CLAST Alternative**  
**(2003-2007)**



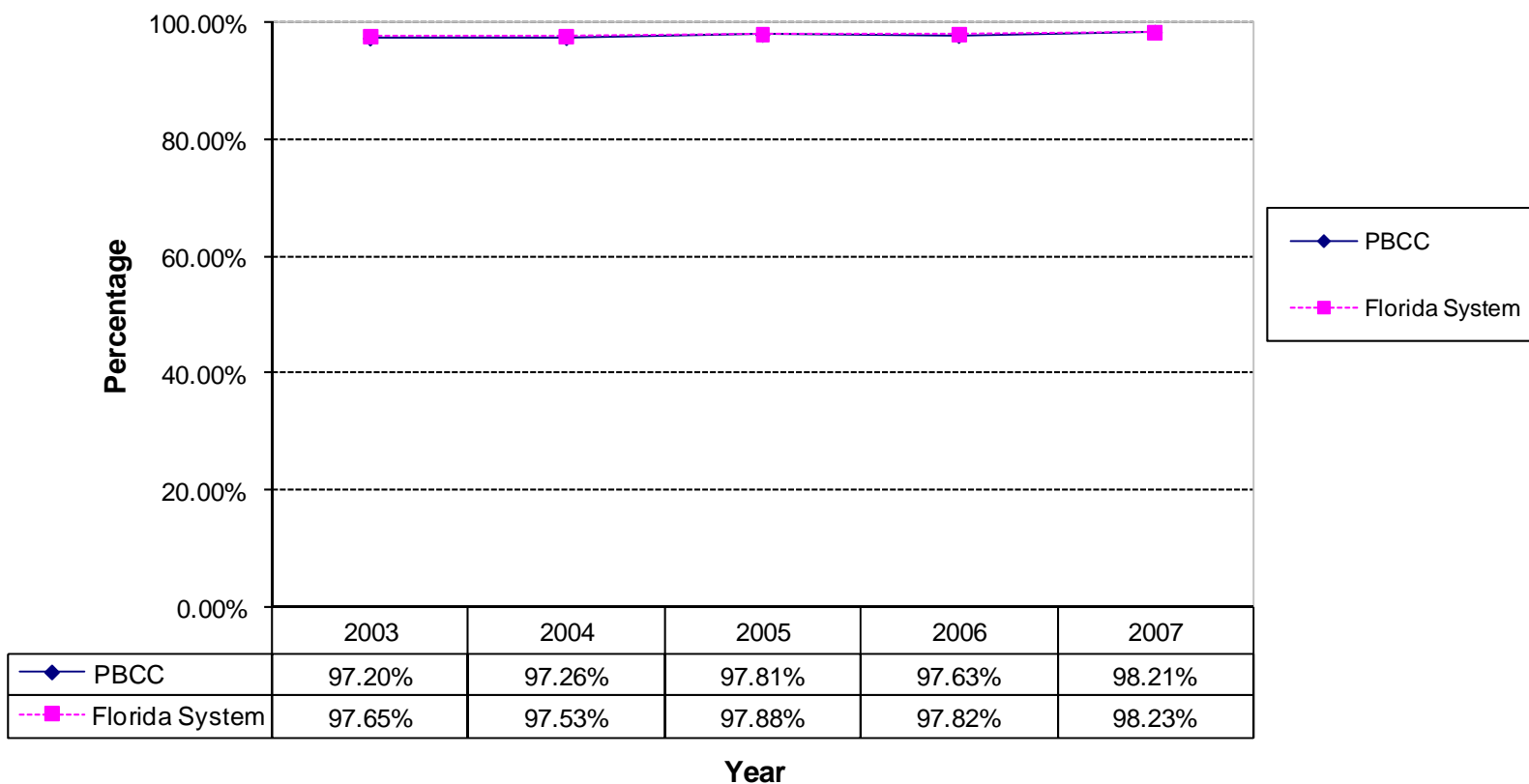
**Figure 24**  
**Accountability Outcome Measure 5**  
**Comparison of CLAST Performance Report For Mathematics Subtest**  
**between PBCC and Florida System**  
**Total Students Who Attempted the CLAST or Had a CLAST Alternative**  
**(2003-2007)**



**Figure 25**  
**Accountability Outcome Measure 5**  
**Comparison of CLAST Performance Report For Reading Subtest**  
**between PBCC and Florida System**  
**Total Students Who Attempted the CLAST or Had a CLAST Alternative**  
**(2003-2007)**



**Figure 26**  
**Accountability Outcome Measure 5**  
**Comparison of CLAST Performance Report For English Subtest**  
**between PBCC and Florida System**  
**Total Students Who Attempted the CLAST or Had a CLAST Alternative**  
**(2003-2007)**



**Figure 27**  
**Accountability Outcome Measure 5**  
**Comparison of CLAST Performance Report For All Subtests**  
**between PBCC and Florida System**  
**Total Students Who Attempted the CLAST or Had a CLAST Alternative**  
**(2003-2007)**

