



# Accountability Report 2006

*Comparing PBCC Performance to the State Benchmarks*

**Academic Affairs**

May 2007

---

**TABLE OF CONTENTS**

	<b>Page</b>
<b>Introduction</b> .....	2
Description of Measures .....	2
<b>Analysis of Each Measure</b> .....	4
<b>Conclusion</b> .....	6
<b>Appendix - Tables and Graphs</b>	
Figure 1 – Measure 1, Part 1 .....	8
Figure 2 – Measure .....	9
Figure 3 .....	10
Figure 4 .....	11
Figure 5 .....	12
Figure 6 .....	13
Figure 7 .....	14
Figure 8 .....	15
Figure 9 .....	16
Figure 10 .....	17
Figure 11 .....	18
Figure 12 .....	19
Figure 13 .....	20
Figure 14 .....	21
Figure 15 .....	22
Figure 16 .....	23
Figure 17 .....	24
Figure 18 .....	25
Figure 19 .....	26
Figure 20 .....	27
Figure 21 .....	28
Figure 22 .....	29
Figure 23 .....	30
Figure 24 .....	31
Figure 25 .....	32
Figure 26 .....	33
Figure 27 .....	34

## INTRODUCTION

The Accountability Report was enacted by the Florida Legislature in 1993 as the State of Florida moved toward measuring performance and outcomes in instructional programs. The purpose of the Accountability Report is to assess the improvement and quality of the instructional and administrative efficiency of the Florida Community College System. This report is a key element in PBCC's institutional effectiveness assessment process.

The following measures were developed by the legislature to assess accountability.

### Description of Measures

- 1. Measure 1 Part 1: Prior Year High School Graduates Enrolled the Following Year Enrollment Report** - This report shows the number and percent of high school graduates the College enrolls from the previous year in its service area.
- 2. Measure 1 Part 2: Enrollment, Retention, and Success Report for Associate in Arts (A.A.), Associate in Science (A.S.), and Postsecondary Vocational Certificate (PSVC) Students** - This report presents the retention and success rates of first-time-in-college A.A. and A.S. degree seeking students and PSVC seeking students.
- 3. Measure 2: Associate in Arts Degree Transfer Performance Report** - This report indicates the performance of A.A. students after they have transferred to a Florida State University.
- 4. Measure 3 Part 1: State Licensure Passing Rate Report** - This report shows the number and percentage of students passed for each appropriate vocational program licensure exam.
- 5. Measure 3 Part 2: Vocational Placement Rates of Associate in Science and Certificate Program Completers and Leavers** - This report displays the number and percentage of students who completed and were placed into an occupation related to their instruction, and also the number and percentage of students who left and were placed into an occupation related to their instruction.
- 6. Measure 4 Part 1: College Preparatory Success Rate Report** - This report presents the number and percent of first-time- in-college students who failed some portions of their entrance exam, how many of those enrolled in the college preparatory classes, and the number and percent of those who passed the highest level college preparatory courses.

- 7. Measure 4 Part 2: College Preparatory Enrollment, Retention and Success Report for Associate in Arts, Associate in Science, and Postsecondary Vocational Certificate Students** - This report shows retention and success rates of first-time- in-college A.A. and A.S. degree seeking students and PSVC seeking students, who have completed all college preparatory requirements.
  
- 8. Measure 5: CLAST Performance Report** - This reports shows the passing number and percent of students who attempted the CLAST or had a CLAST alternative for each CLAST subtest and for all subtests combined.

## ANALYSIS OF EACH MEASURE

### 1. Measure 1, Part 1 - Prior Year High School Graduates Enrolled the Following Year Enrollment Report

- Palm Beach Community College enrolled 28.79% of the high school graduates in its service district. The five-year trend comparison indicates that the Florida Community College System has had somewhat higher enrollment averages than Palm Beach Community College (Figure 1, page 8).

### 2. Measure 1, Part 2 - Enrollment, Retention, and Success Report for Associate in Arts, Associate in Science, and Postsecondary Vocational Certificate Students.

- **Total Associate in Arts students:** Palm Beach Community College attained a 65.52% retention rate and a 90.43% success rate for associate in arts students in the current report. The College's five-year trend in retention and success rates consistently exceeds or equals the Florida Community College System average (Figures 2 – 3, pages 9, 10).
- **Total Associate in Science students:** Palm Beach Community College achieved a 61.03% retention rate for associate in science students and a 91.54% success rate. The college has consistently improved on these measures since 2003 and now exceeds the Florida Community College Systems in retention and success rates (Figures 4 – 5, pages 11, 12).
- **Total Postsecondary Vocational Certificate students:** Palm Beach Community College achieved a 94.67% retention rate and a 93.33% success rate, outperforming the Florida Community College System average almost every year for the past five years (Figures 6 – 7, pages 13, 14).

### 3. Measure 2 - Associate in Arts Degree Transfer Performance Report

- The average GPA obtained by Palm Beach Community College Associate in Arts transfer students in the State University System is 2.90; this average GPA is similar to the Florida Community College System average of 2.92. Additionally, 73.43% of AA transfer students achieve a GPA at or above 2.50, a percentage that parallels the Florida Community College System average in the five-year trend comparison (Figure 8 - 9, pages 15, 16).

**4. Measure 3 Part 1 - State Licensure Passing Rate Report**

- The data for this section of the report has not been distributed by the state of Florida since 2000 (Figure 10, page 17).

**5. Measure 3 Part 2: Vocational Placement Rates of Associate in Science and Certificate Program Completers and Leavers**

- Palm Beach Community College completers achieved an 87.12% placement rate while PBCC leavers attained a 64.04% placement rate. Although both of these percents are lower than they were the last two years, the decrease is solely due to a new (and more accurate) accounting procedure. PBCC's percents are similar to the state average (Figures 11 – 12, pages 18, 19).

**6. Measure 4 Part 1 - College Preparatory Success Rate Report**

- **FTIC Students Failed Any Entry- level Test:** Of Palm Beach Community College's FTIC students, 71.35% placed in college preparatory studies, which is higher than the Florida Community College System average (Figure 13, page 20).
- **Percent Passed Highest level for College Preparatory Reading:** Palm Beach Community College achieved a passing rate of 67.48%, which is somewhat below the Florida Community College System average (Figure 14, page 21).
- **Percent Passed Highest Level for College Preparatory Writing:** Palm Beach Community College achieved a passing rate of 64.79%, which is slightly less than the performance of the Florida Community College System average (Figure 15, page 22).
- **Percent Passed Highest Level for College Preparatory Math:** Palm Beach Community College achieved a passing rate of 51.32%, which is slightly lower than the Florida Community College System average (Figure 16, page 23).

**7. Measure 4 Part 2 - College Preparatory Enrollment, Retention and Success Report for Associate in Arts, Associate in Science, and Postsecondary Vocational Certificate Students**

- **Total Associate in Arts students:** Palm Beach Community College's retention rate (65.96%) was similar to the Florida Community College System average, whereas the success rate (93.27%) exceeded the state average in this year's report (Figures 17 – 18, pages 24, 25).
- **Total Associate in Science students:** The five-year trend indicates that Palm Beach Community College outperformed the Florida Community College System in both retention (67.02%) and success rates (94.68%) in this year's report (Figures 19 – 20, pages 26, 27).
- **Total Postsecondary Vocational Certificate students:** Due to small number of, or even no students in postsecondary vocational certificate programs included in the

accountability report study, the retention and success rates of the College fluctuate drastically. In this year's report, the PBCC retention rate is 100.00% and the success rate is 91.67% (Figures 21 – 22, pages 28, 29).

#### **8. Measure 5 - CLAST Performance Report**

- Results including students who attempted the CLAST or had a CLAST alternative: The performance of Palm Beach Community College in passing the four subtests and also all four subtests combined is similar to the Florida Community College System average in Report Year 2002 and 2003. The passing rate for individual subtests ranges from 97.63% to 98.23% and all four tests combined is 94.60% (Figures 23 – 27, pages 30-34).

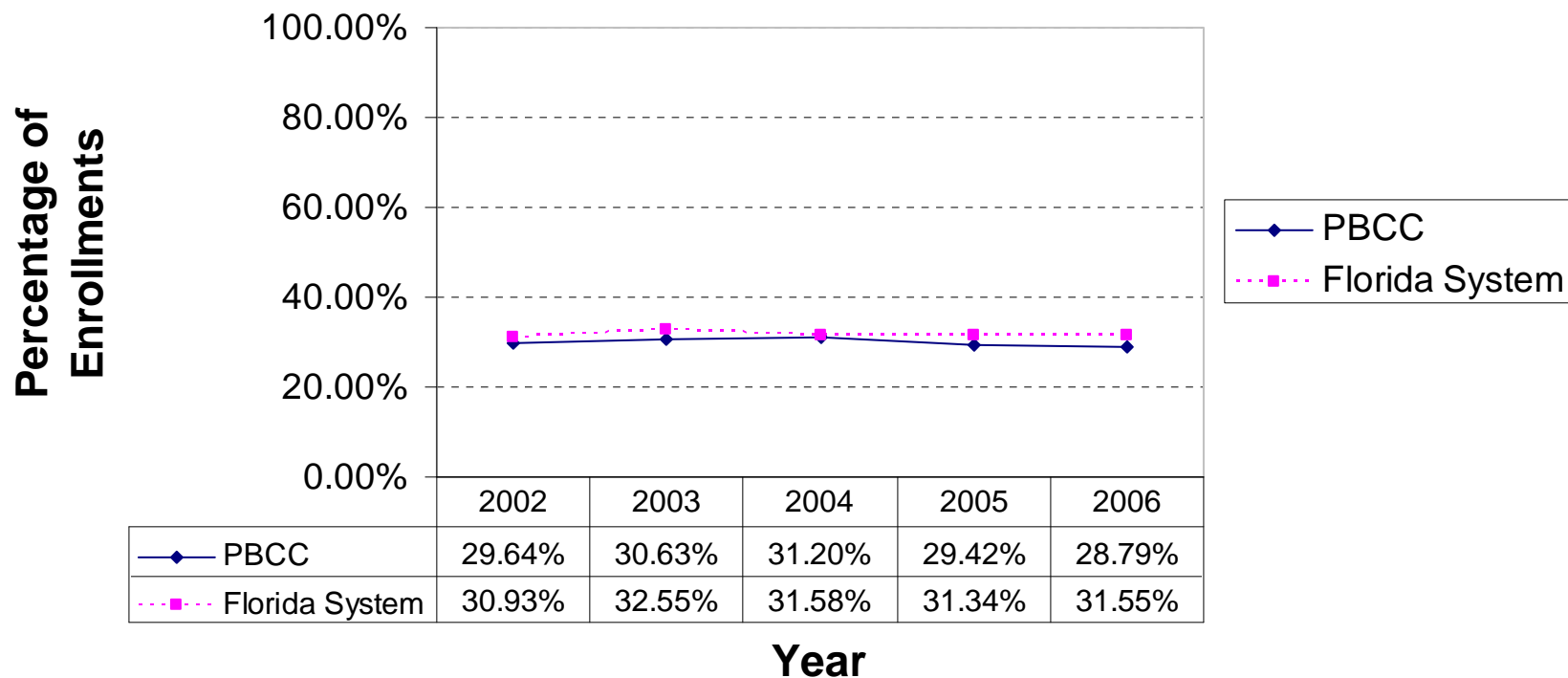
### **CONCLUSION**

Palm Beach Community College continues its excellent results on the accountability measures as established by the State of Florida. Throughout these measures, student performance while at PBCC continues to reach high levels of performance. This high level of performance carries through as students enter the state university system as evidenced by their GPA once they attain junior status. In addition, our high placement rates in career programs indicate that our students are able to enter their chosen profession once they complete a career program at PBCC.

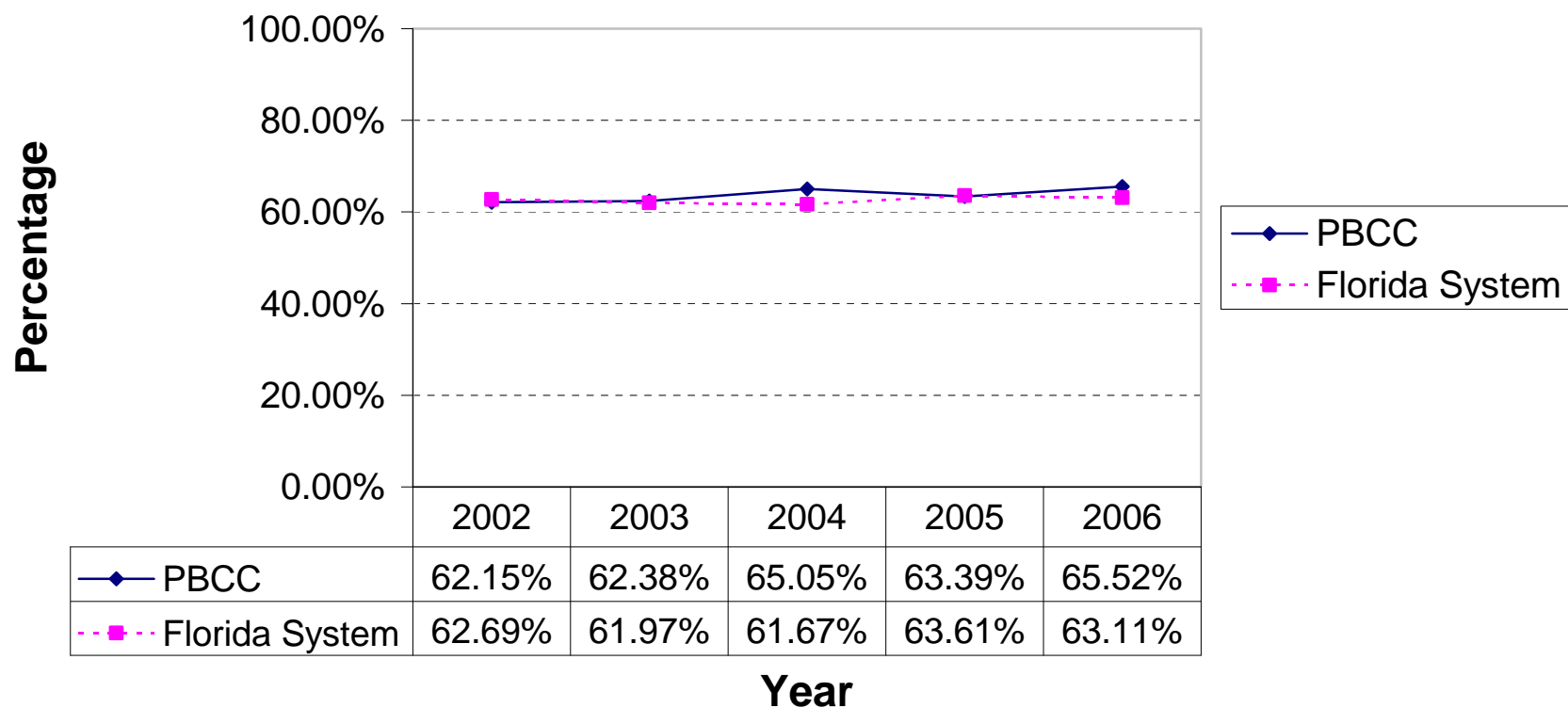
# **APPENDIX**

# **TABLES AND GRAPHS**

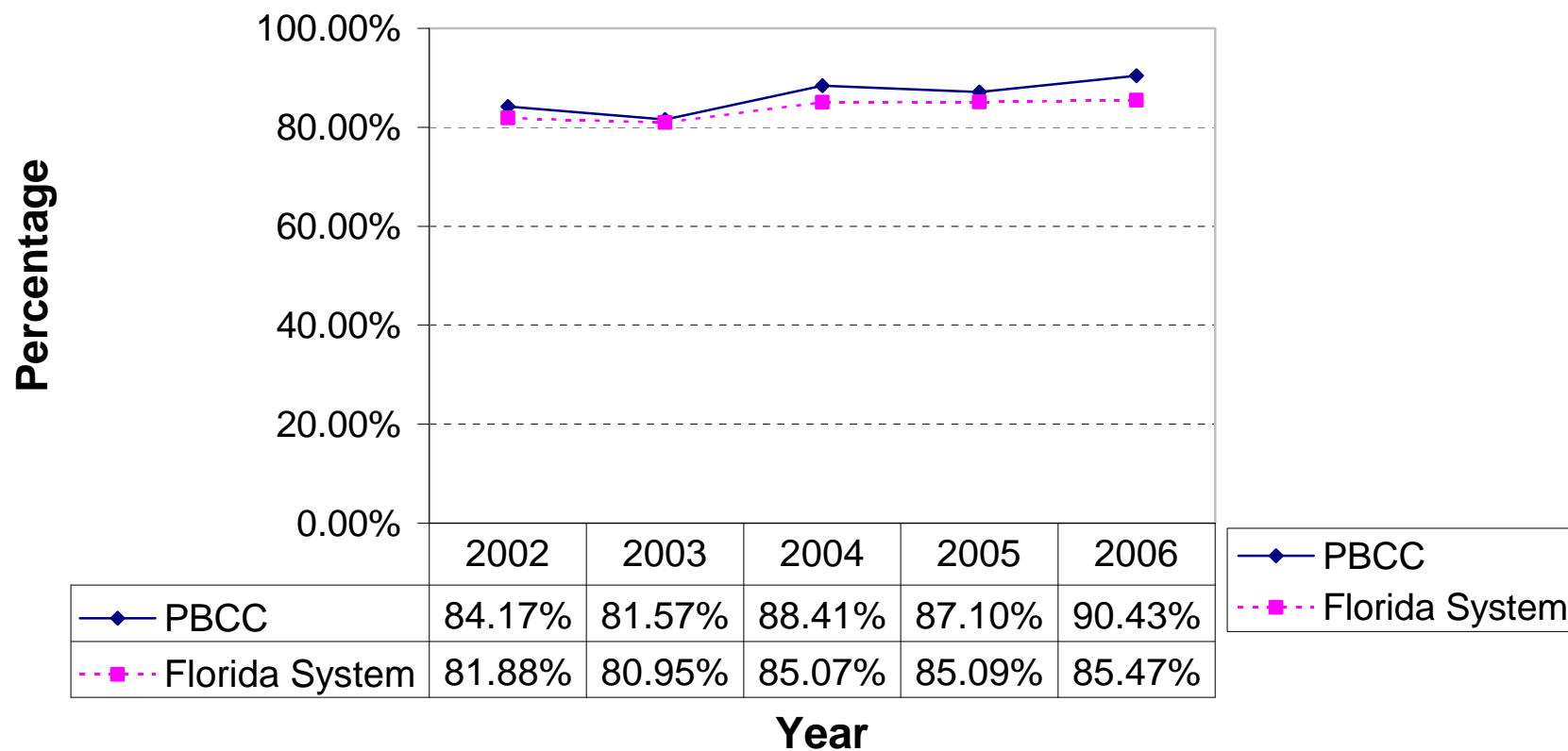
**Figure 1**  
**Accountability Outcome Measure 1 Part 1**  
**Comparison of Prior Year High School Enrolled the**  
**Following Year between PBCC and Florida System**  
**Enrollment Report - Total Students (2002-2006)**



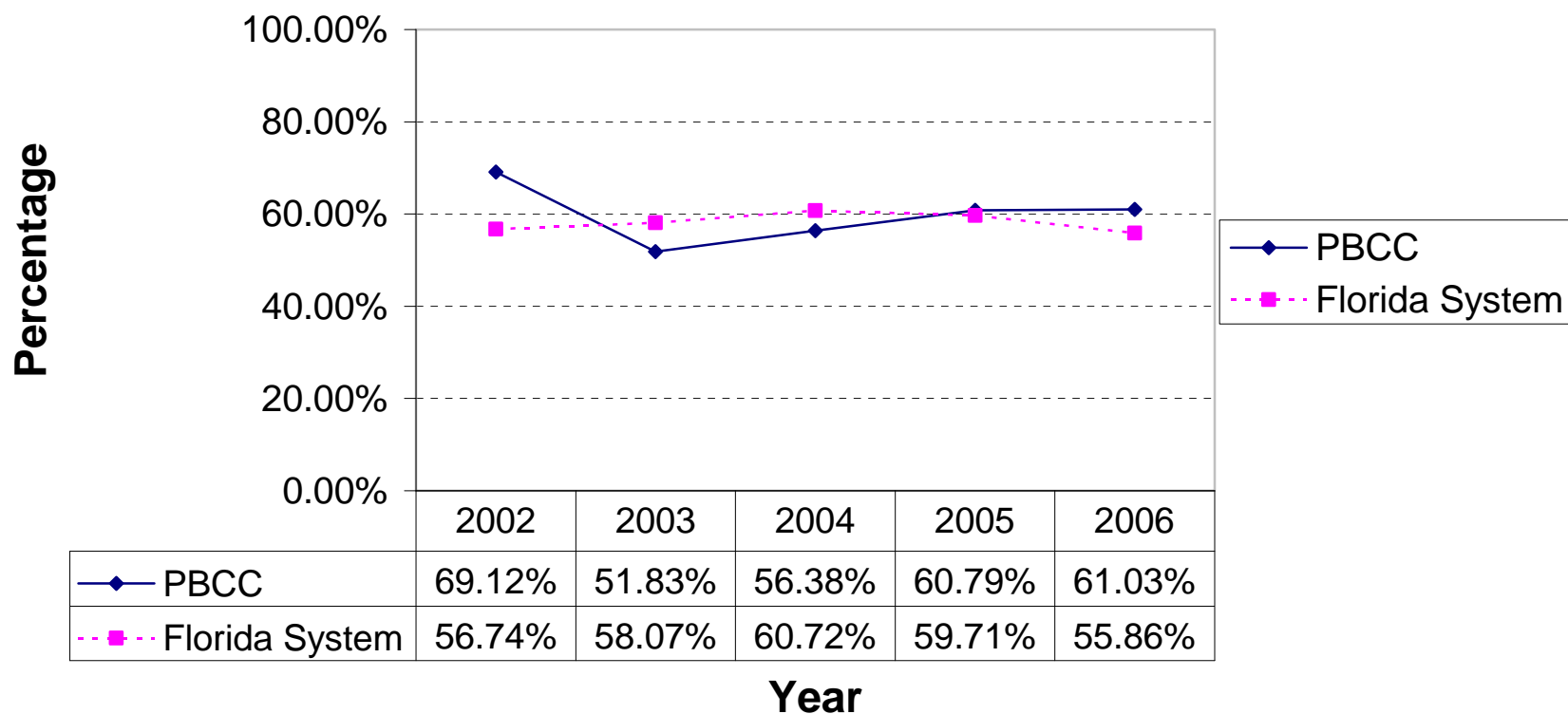
**Figure 2**  
**Accountability Outcome Measure 1 Part 2**  
**Comparison of Retention Rate Report for Total**  
**Associate in Arts Students between PBCC and Florida System**  
**Total Students (2002-2006)**



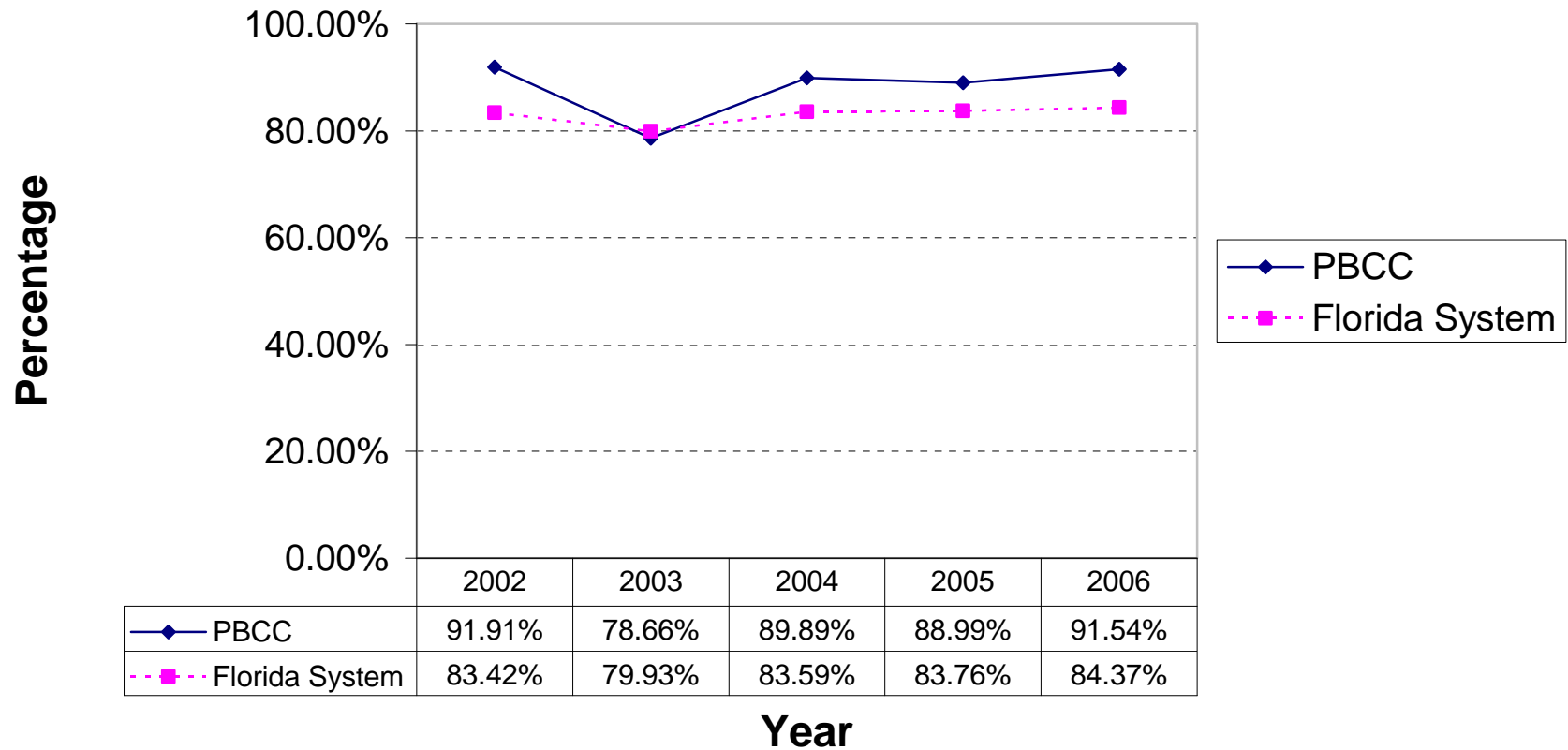
**Figure 3**  
**Accountability Outcome Measure 1 Part 2**  
**Comparison of Success Rate Report for Total**  
**Associate in Arts Students between PBCC and Florida System**  
**Total Students (2002-2006)**



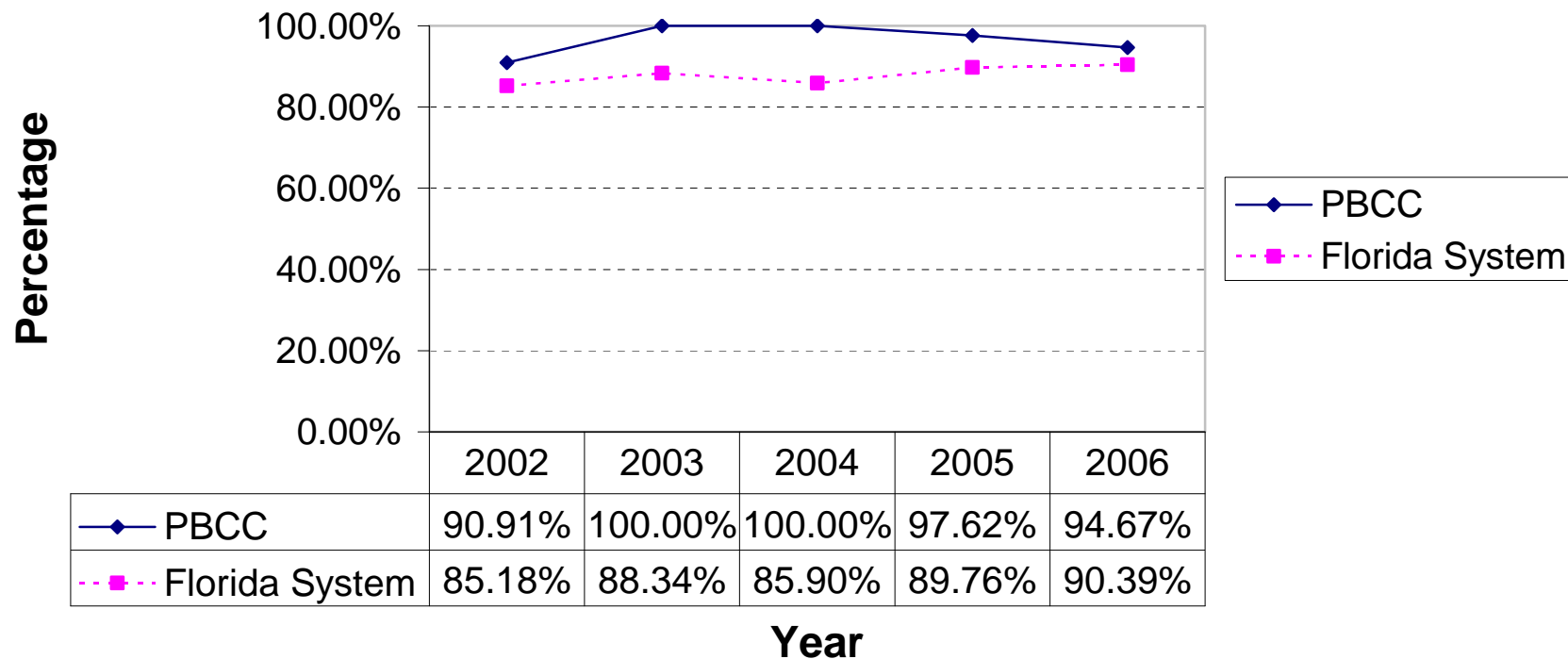
**Figure 4**  
**Accountability Outcome Measure 1 Part 2**  
**Comparison of Retention Rate Report for Total**  
**Associate in Science Students between PBCC and Florida System**  
**Total Students (2002-2006)**



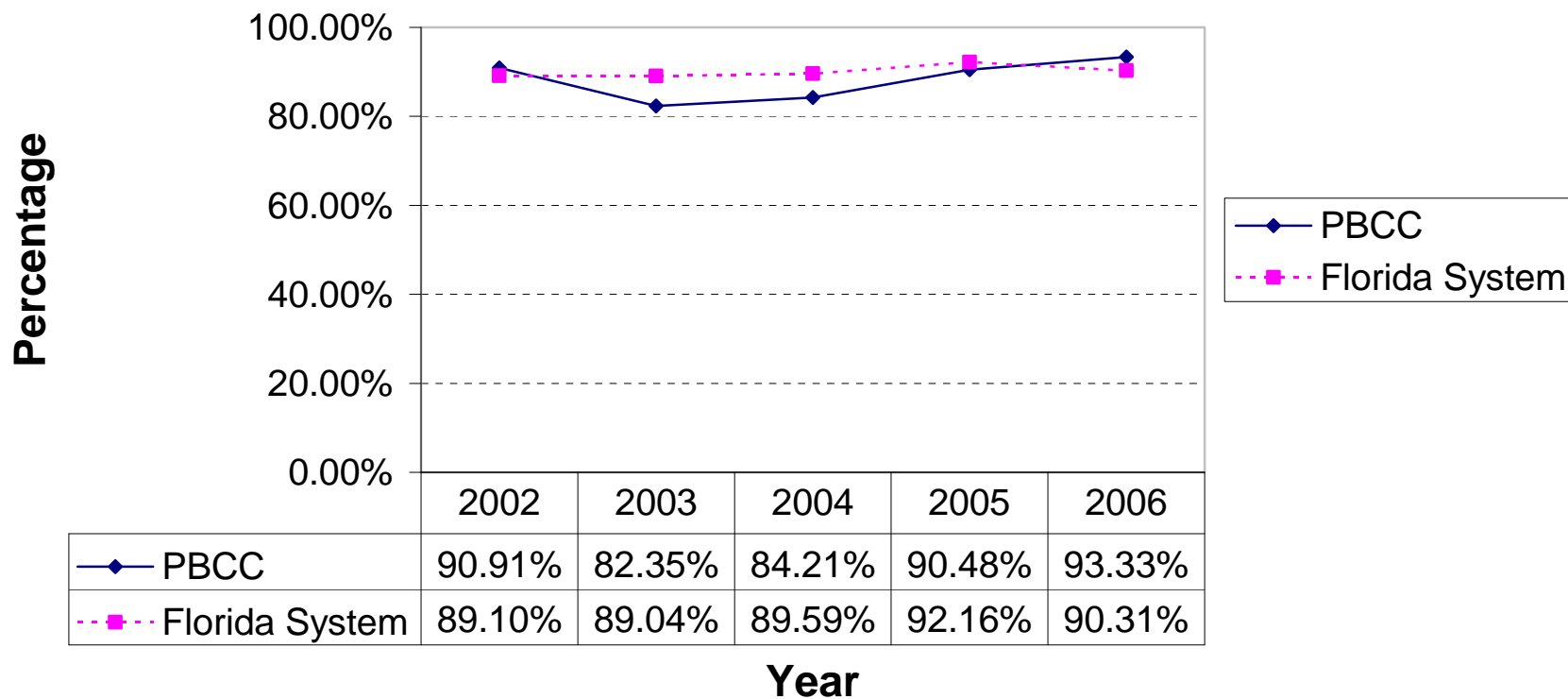
**Figure 5**  
**Accountability Outcome Measure 1 Part 2**  
**Comparison of Success Rate Report for Total**  
**Associate in Science Students between PBCC and Florida System**  
**Total Students (2002-2006)**



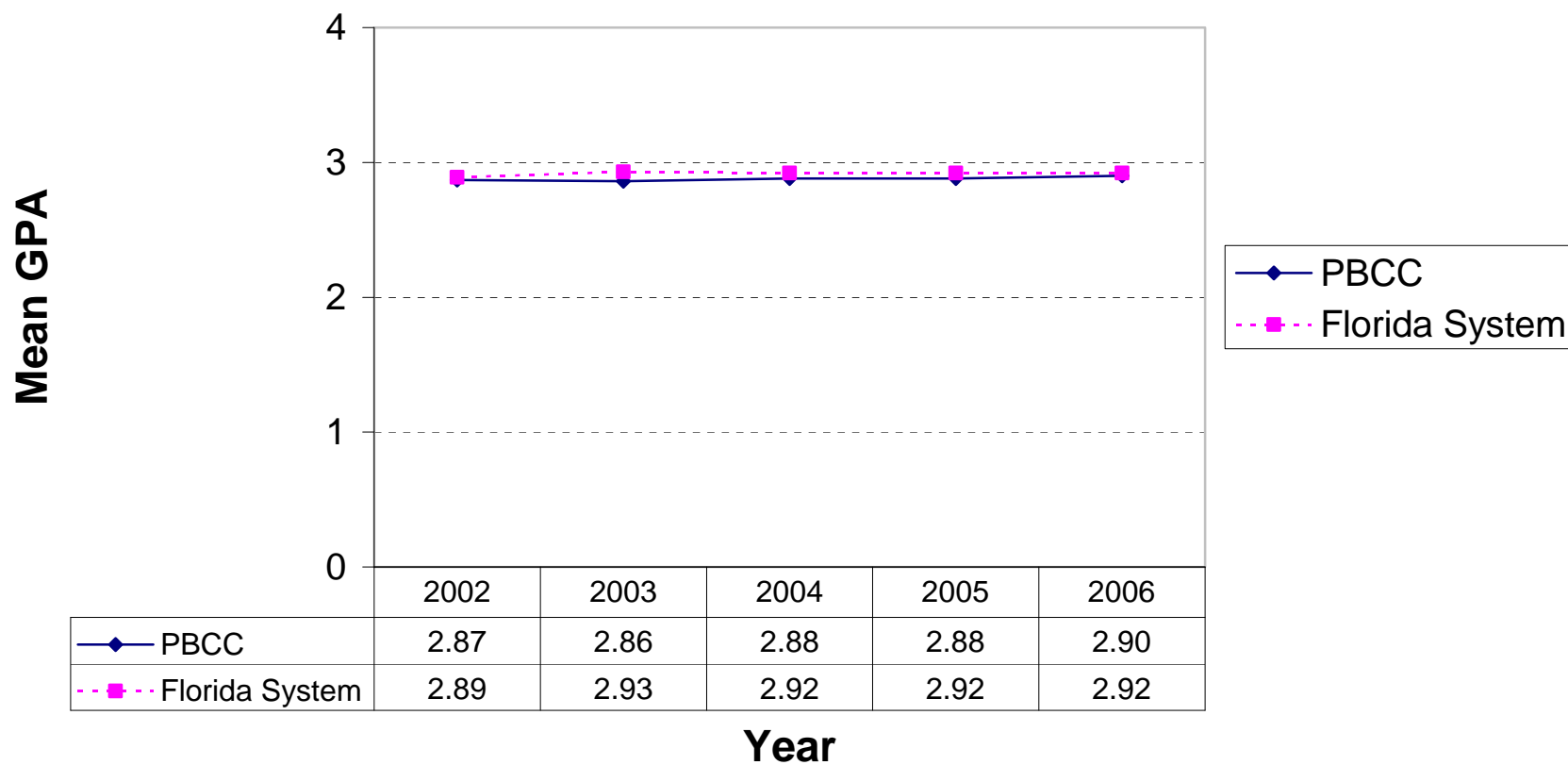
**Figure 6**  
**Accountability Outcome Measure 1 Part 2**  
**Comparison of Retention Rate Report for Total**  
**Postsecondary Vocational Certificate Students**  
**between PBCC and Florida System**  
**Total Students (2002-2006)**



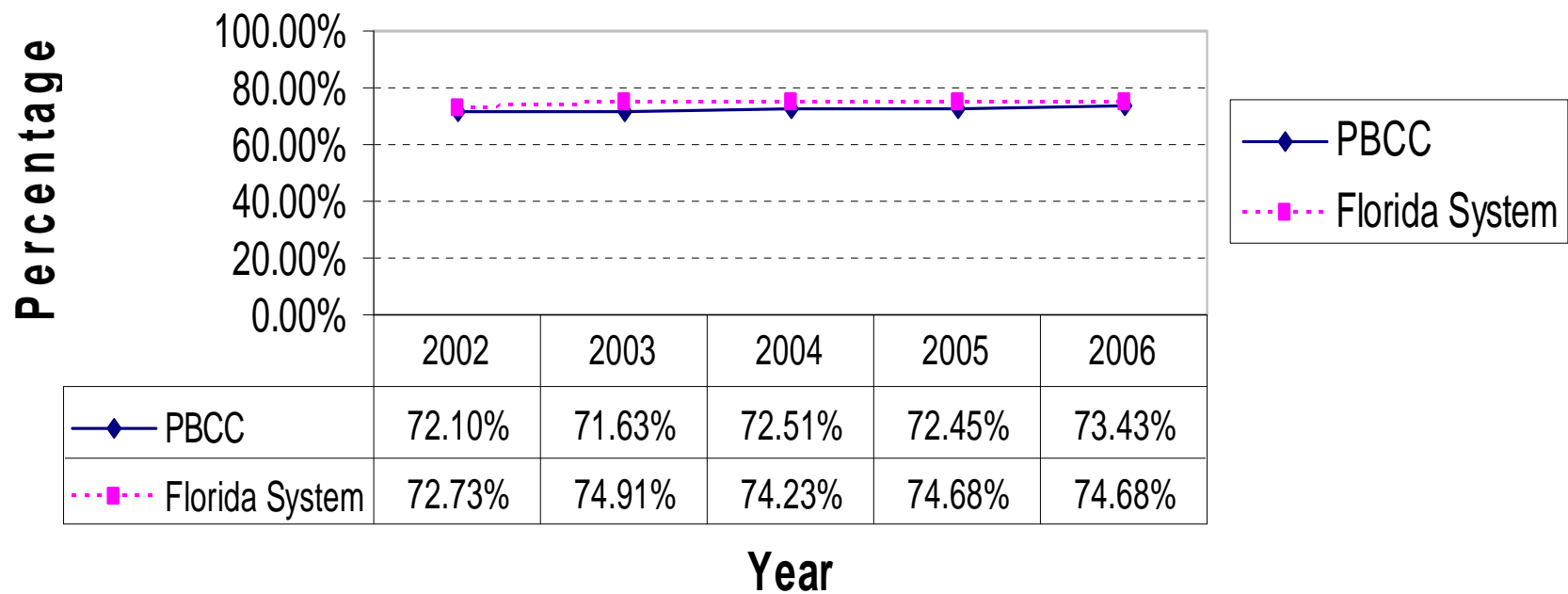
**Figure 7**  
**Accountability Outcome Measure 1 Part 2**  
**Comparison of Success Rate Report for Total**  
**Postsecondary Vocational Certificate Students**  
**between PBCC and Florida System**  
**Total Students (2002-2006)**



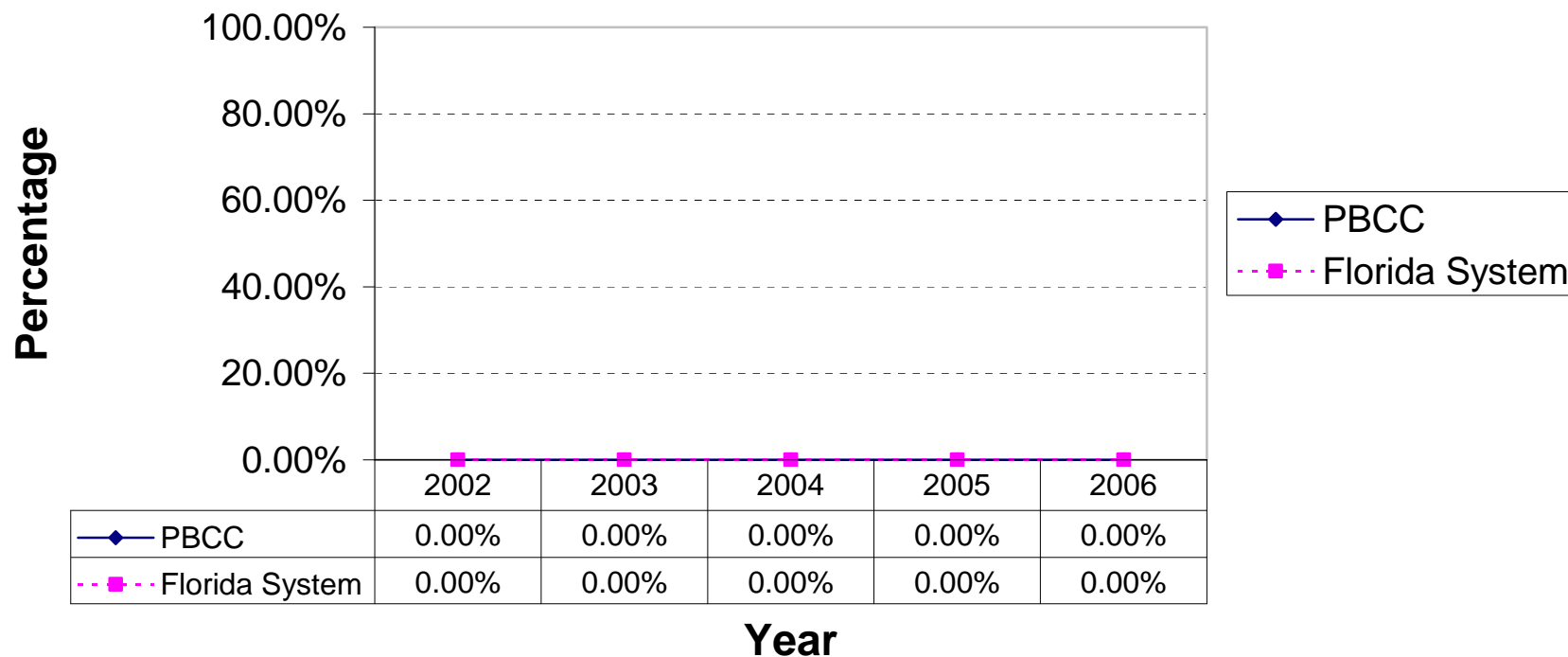
**Figure 8**  
**Accountability Outcome Measure 2**  
**Comparison of Associate in Arts Degree Transfer Performance for Mean GPA**  
**between PBCC and Florida System**  
**Total Students (2002-2006)**



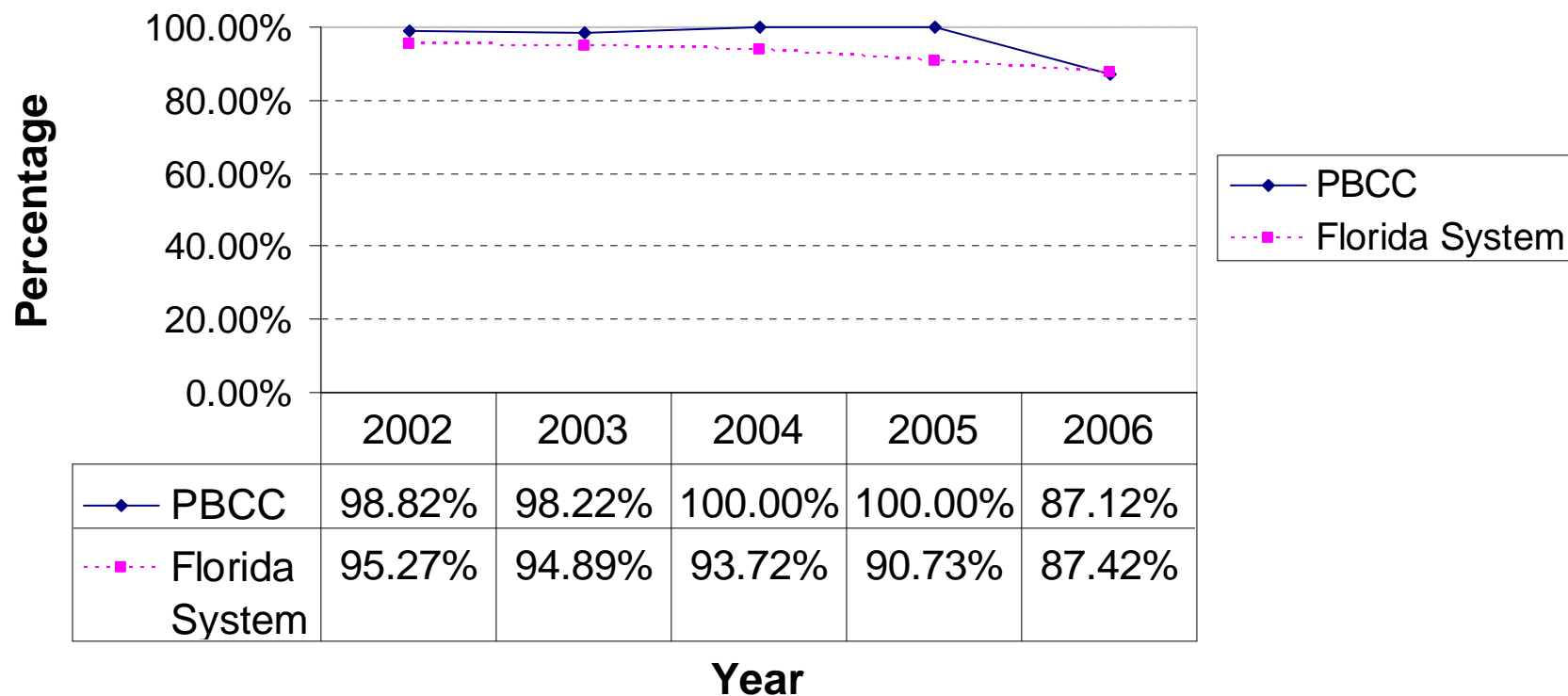
**Figure 9**  
**Accountability Outcome Measure 2**  
**Comparison of Associate in Arts Degree Transfer Performance for Percent**  
**with GPAs at or above 2.5**  
**between PBCC and Florida System**  
**Total Students (2002-2006)**



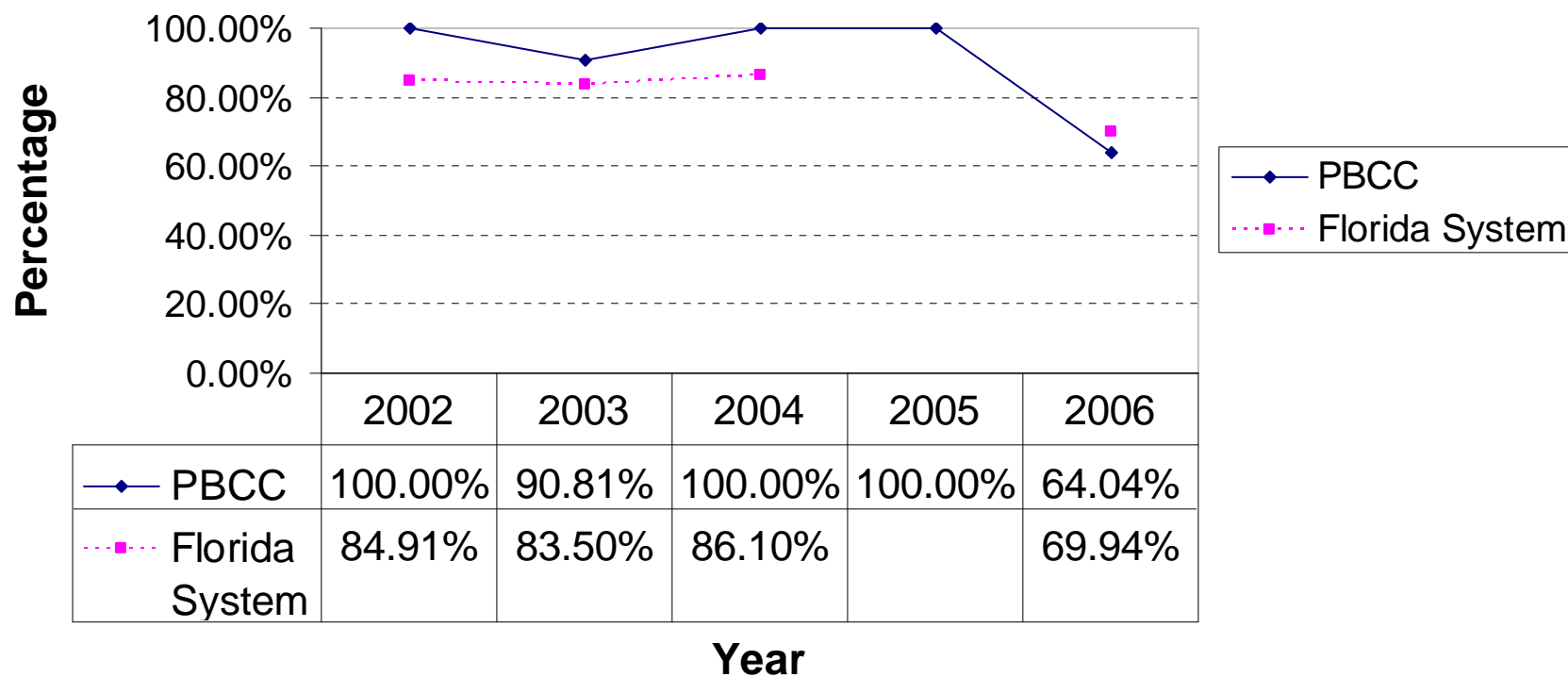
**Figure 10**  
**Accountability Outcome Measure 3 Part 1**  
**Comparison of State Licensure Passing Rate Report**  
**between PBCC and Florida System**  
**Total Students (2002)**  
**(2002, 2003, 2004, 2005 and 2006 DATA NOT AVAILABLE)**



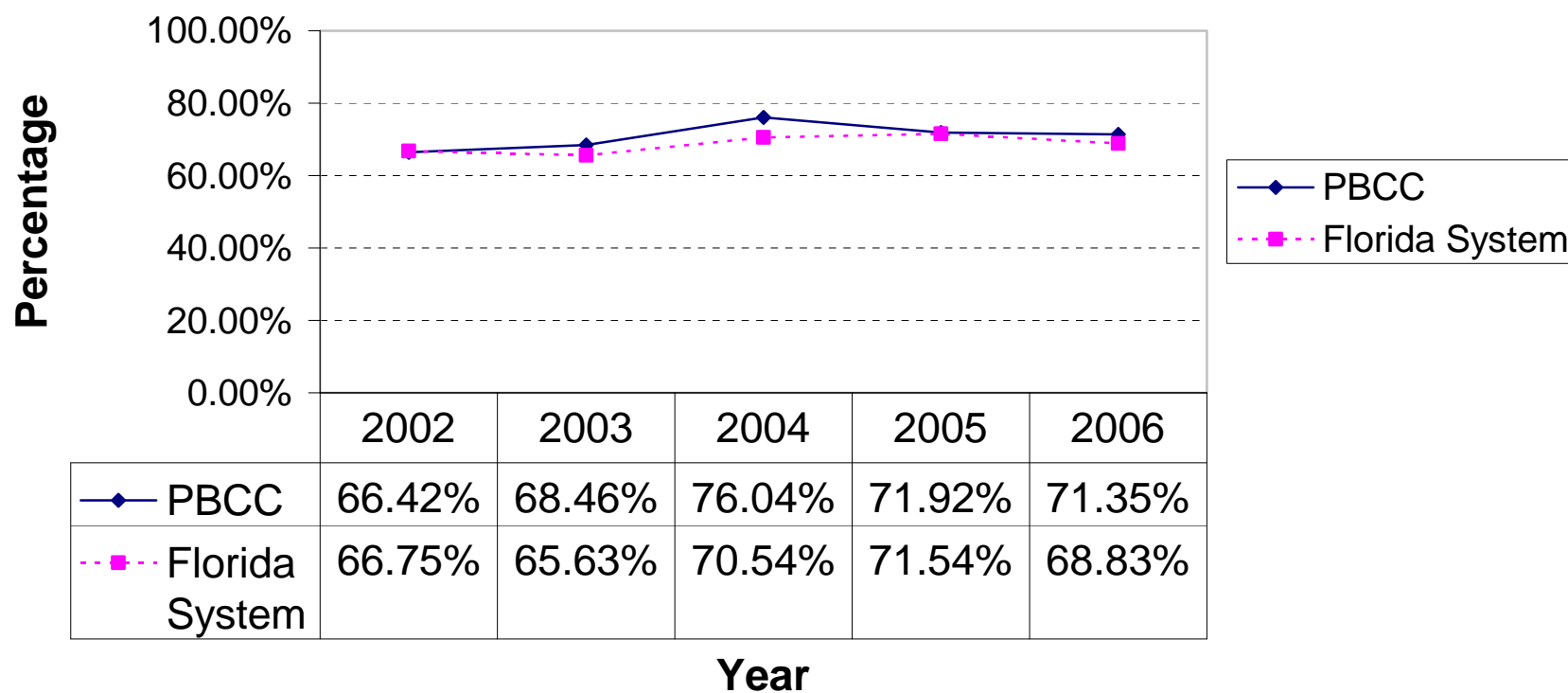
**Figure 11**  
**Accountability Outcome Measure 3 Part 2**  
**Comparison of Vocational Placement Rates for Completers**  
**between PBCC and Florida System**  
**Total Students (2002-2006)**



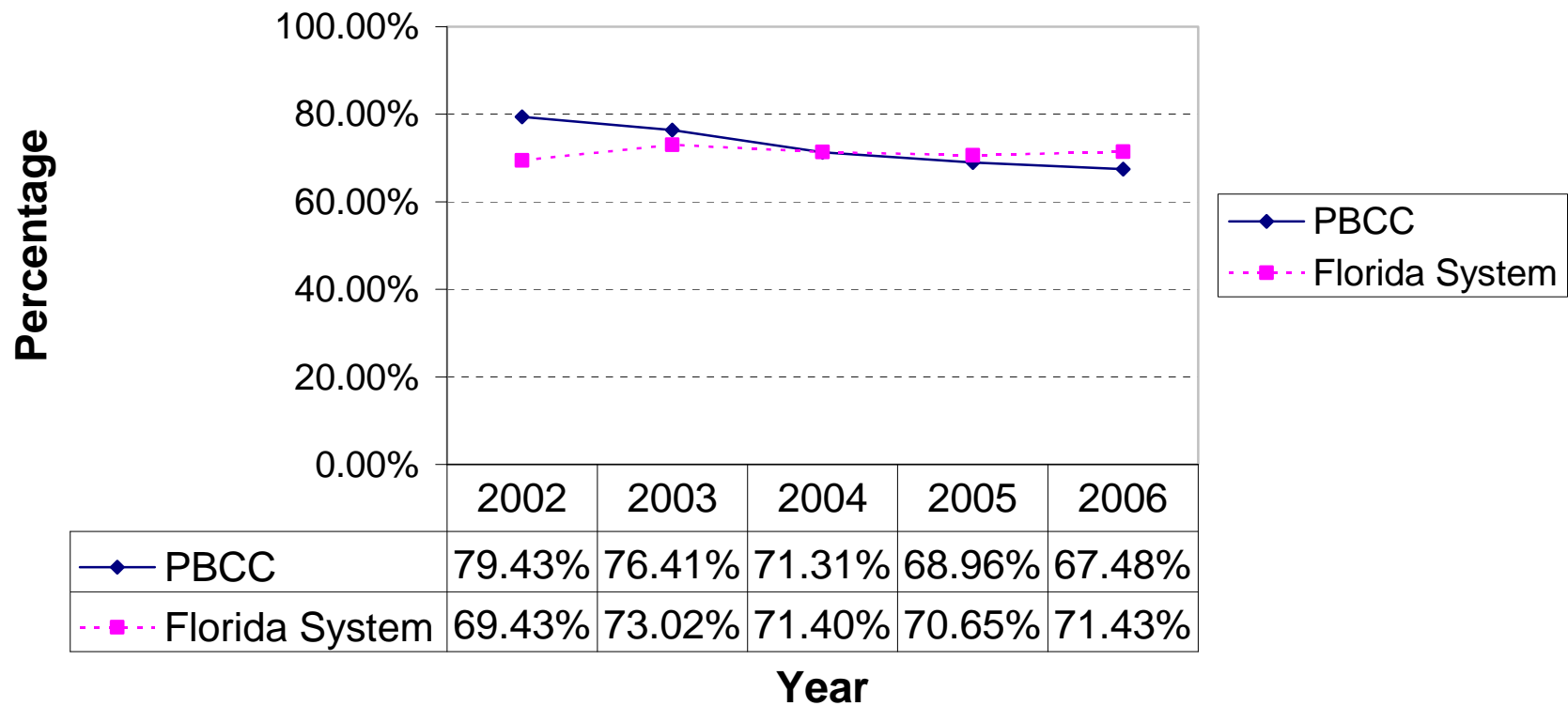
**Figure 12**  
**Accountability Outcome Measure 3 Part 2**  
**Comparison of Vocational Placement Rates for Leavers**  
**between PBCC and Florida System**  
**Total Students (2002-2006)**



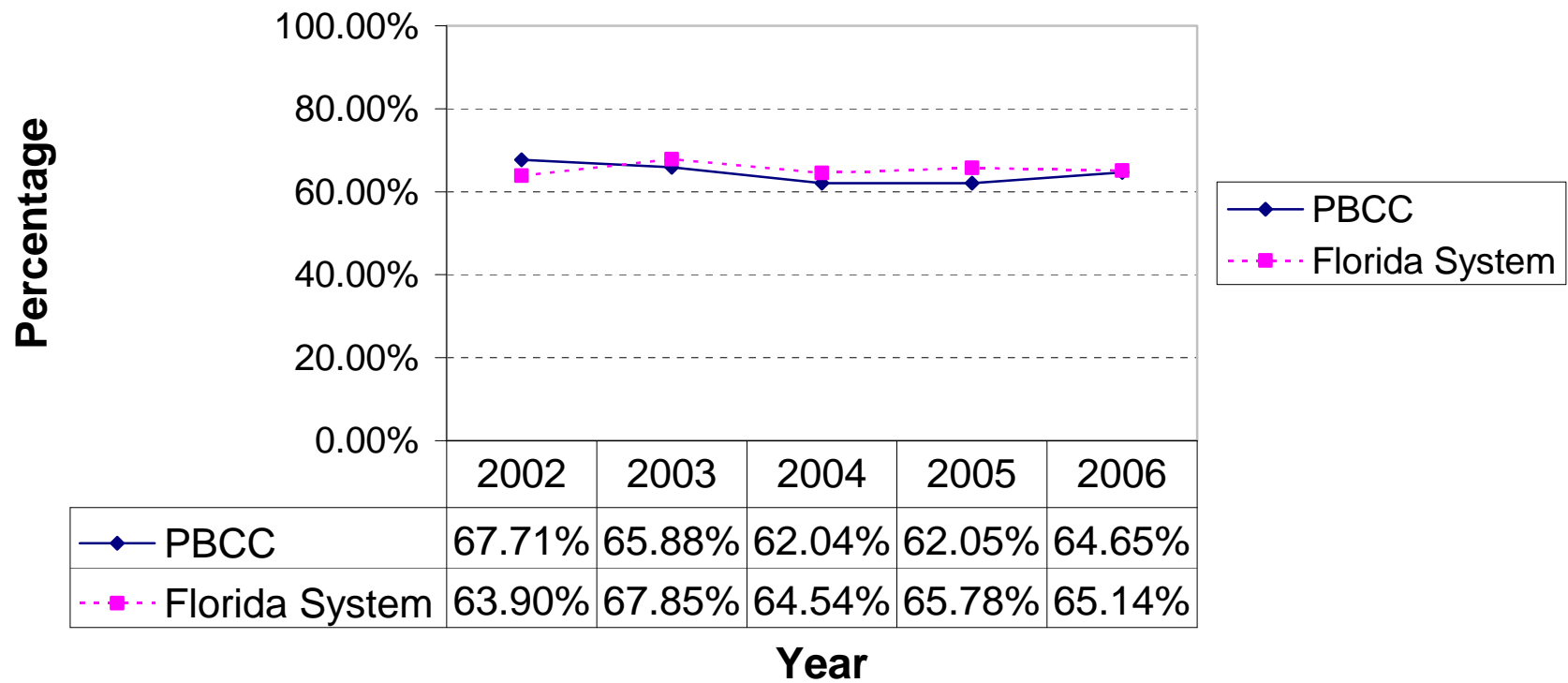
**Figure 13**  
**Accountability Outcome Measure 4 Part 1**  
**Comparison of FTIC Students Failed Any Entry-Level Test**  
**between PBCC and Florida System**  
**Total Students (2002-2006)**



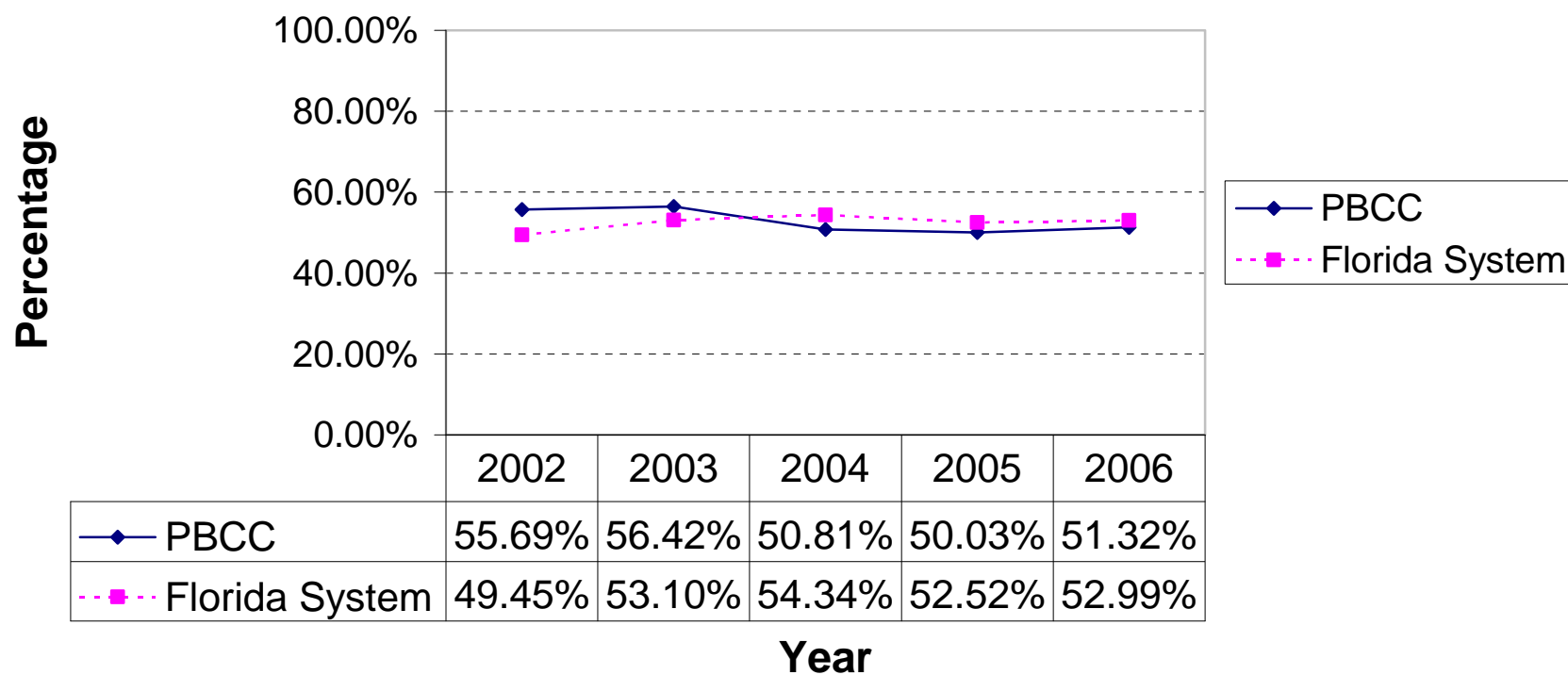
**Figure 14**  
**Accountability Outcome Measure 4 Part 1**  
**Comparison of Percent Passed Highest Level for College Preparatory**  
**Reading between PBCC and Florida System**  
**Total Students (2002-2006)**



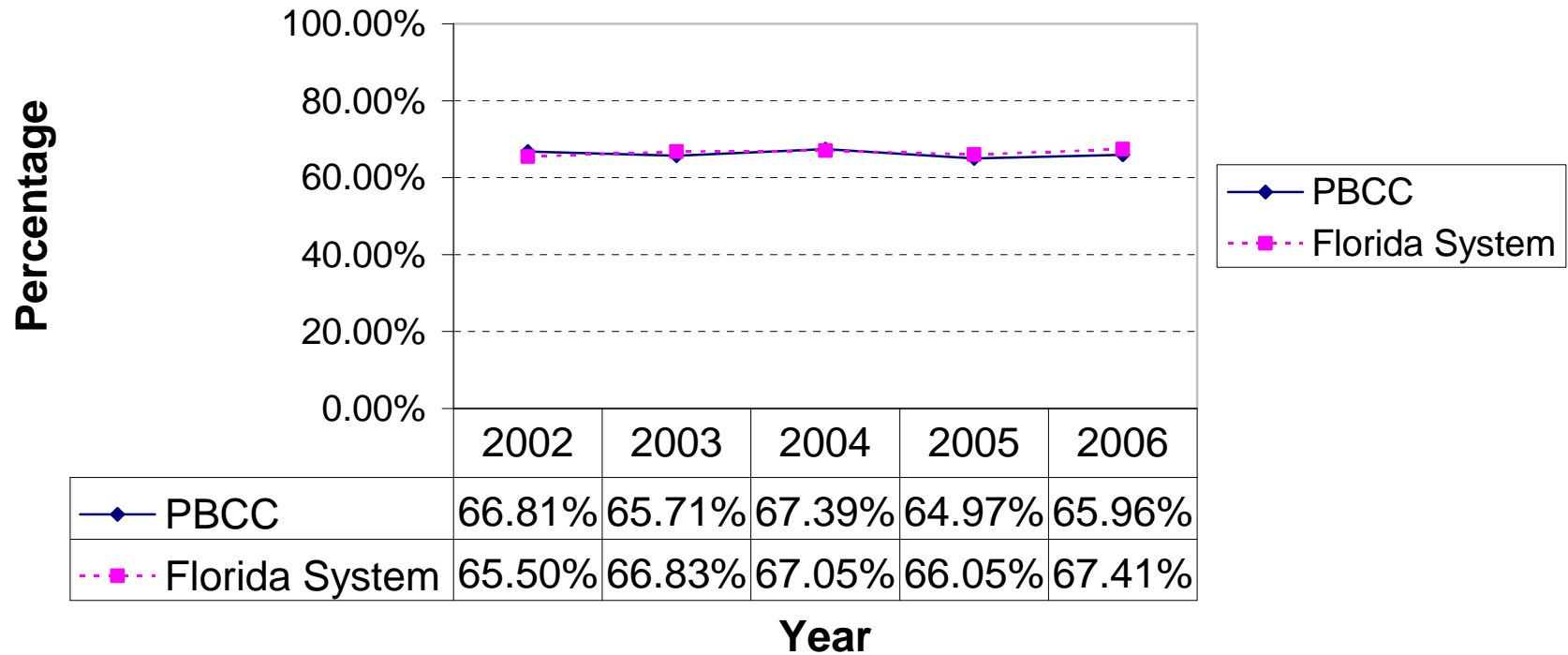
**Figure 15**  
**Accountability Outcome Measure 4 Part 1**  
**Comparison of Percent Passed Highest Level for College Preparatory**  
**Writing between PBCC and Florida System**  
**Total Students (2002-2006)**



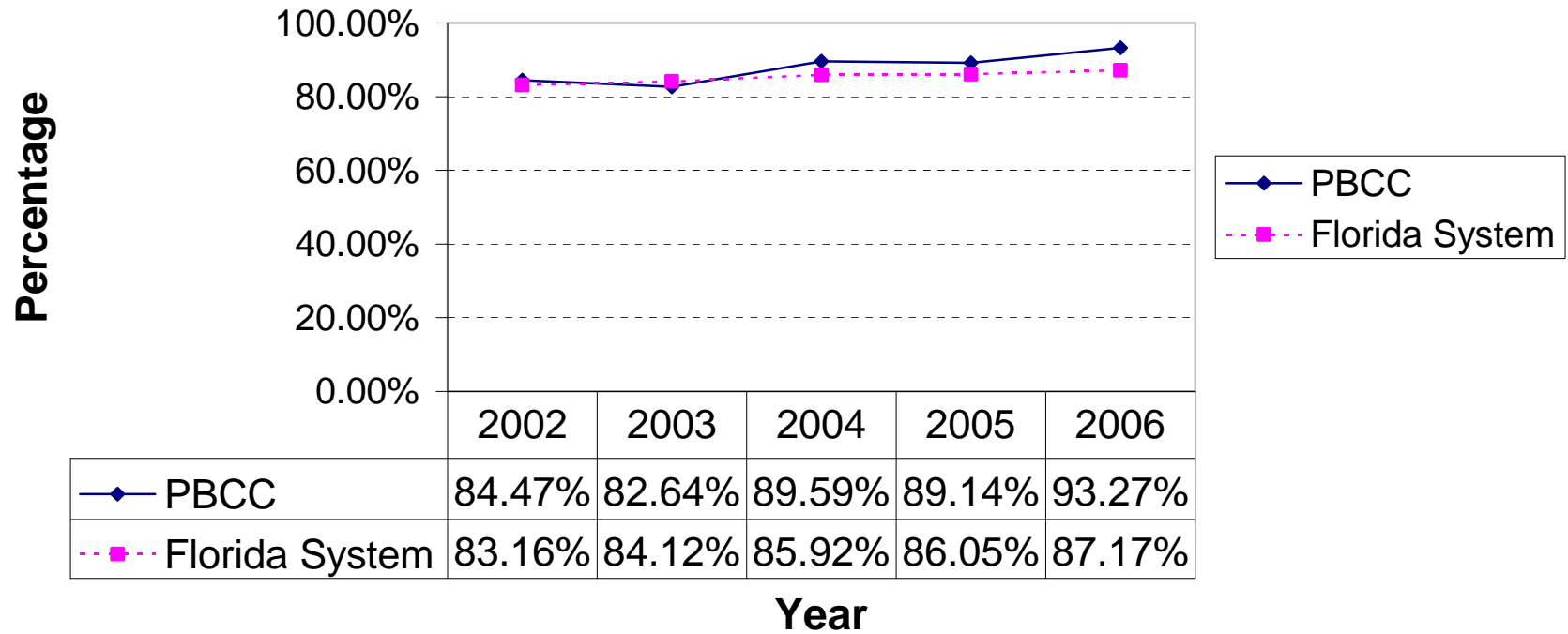
**Figure 16**  
**Accountability Outcome Measure 4 Part 1**  
**Comparison of Percent Passed Highest Level for College**  
**Preparatory Math between PBCC and Florida System**  
**Total Students (2002-2006)**



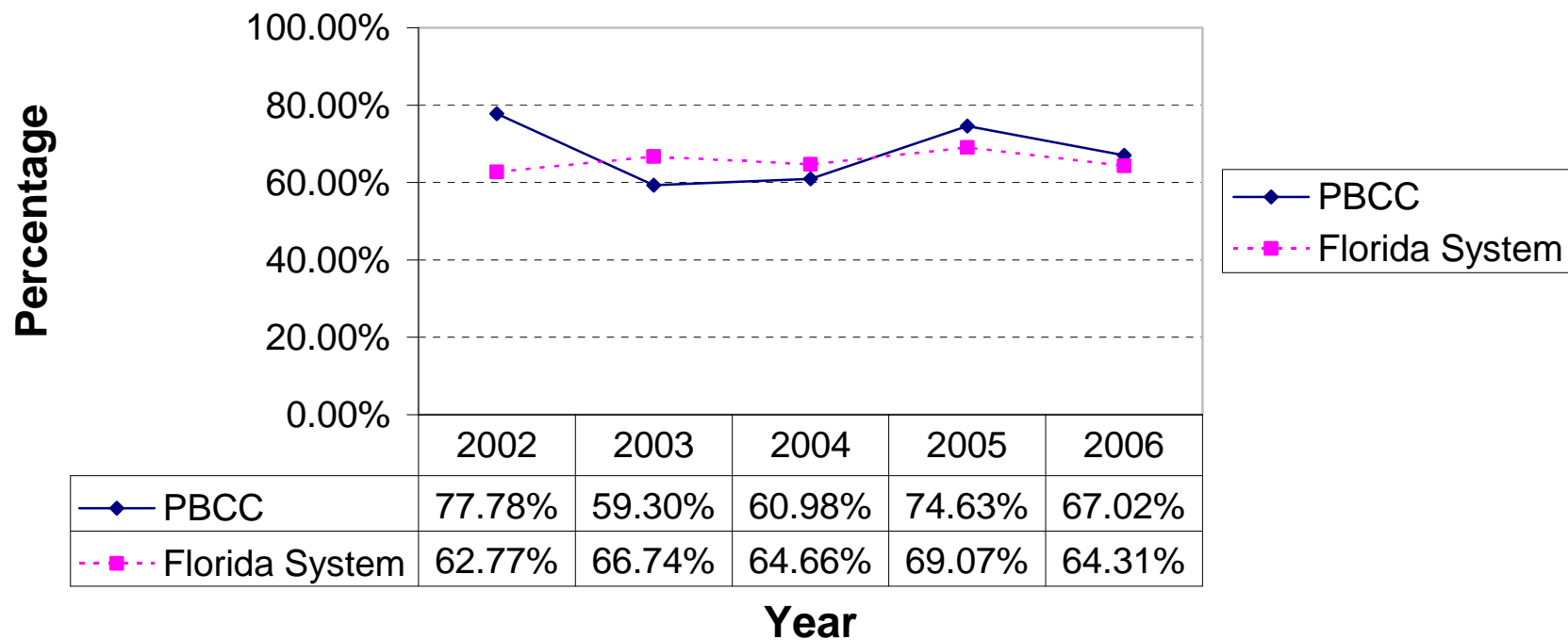
**Figure 17**  
**Accountability Outcome Measure 4 Part 2**  
**Comparison of College Preparatory Retention Rate Report for**  
**Associate in Arts Students**  
**between PBCC and Florida System**  
**Total Students (2002-2006)**



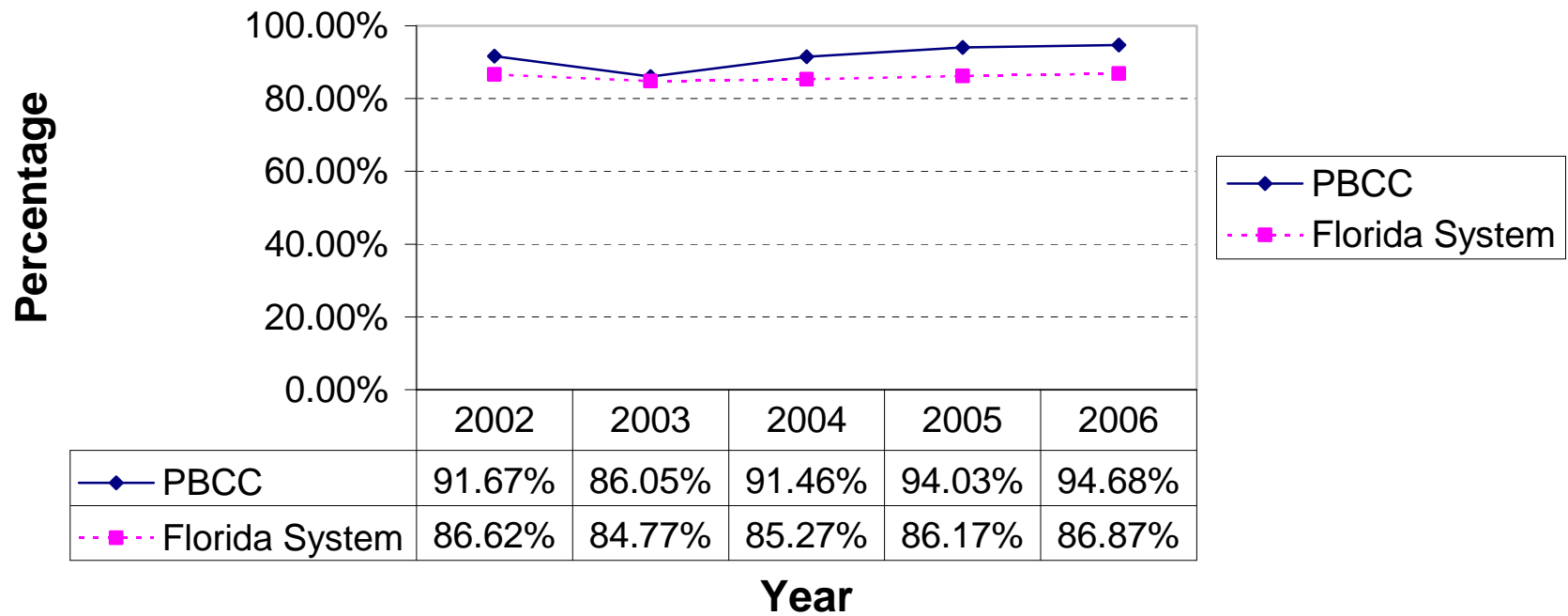
**Figure 18**  
**Accountability Outcome Measure 4 Part 2**  
**Comparison of College Preparatory Success Rate Report for**  
**Associate in Arts Students**  
**between PBCC and Florida System**  
**Total Students (2002-2006)**



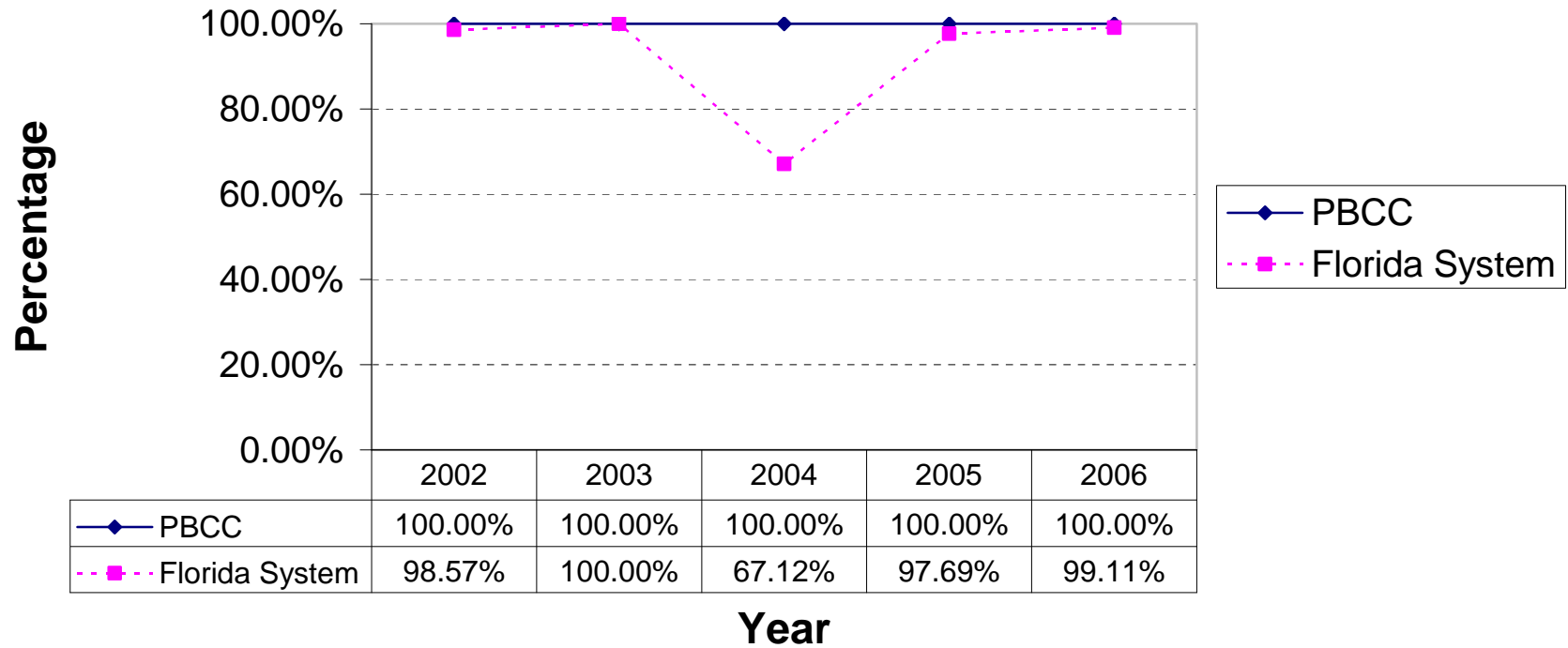
**Figure 19**  
**Accountability Outcome Measure 4 Part 2**  
**Comparison of College Preparatory Retention Rate Report**  
**for Associate in Science Students**  
**between PBCC and Florida System**  
**Total Students (2002-2006)**



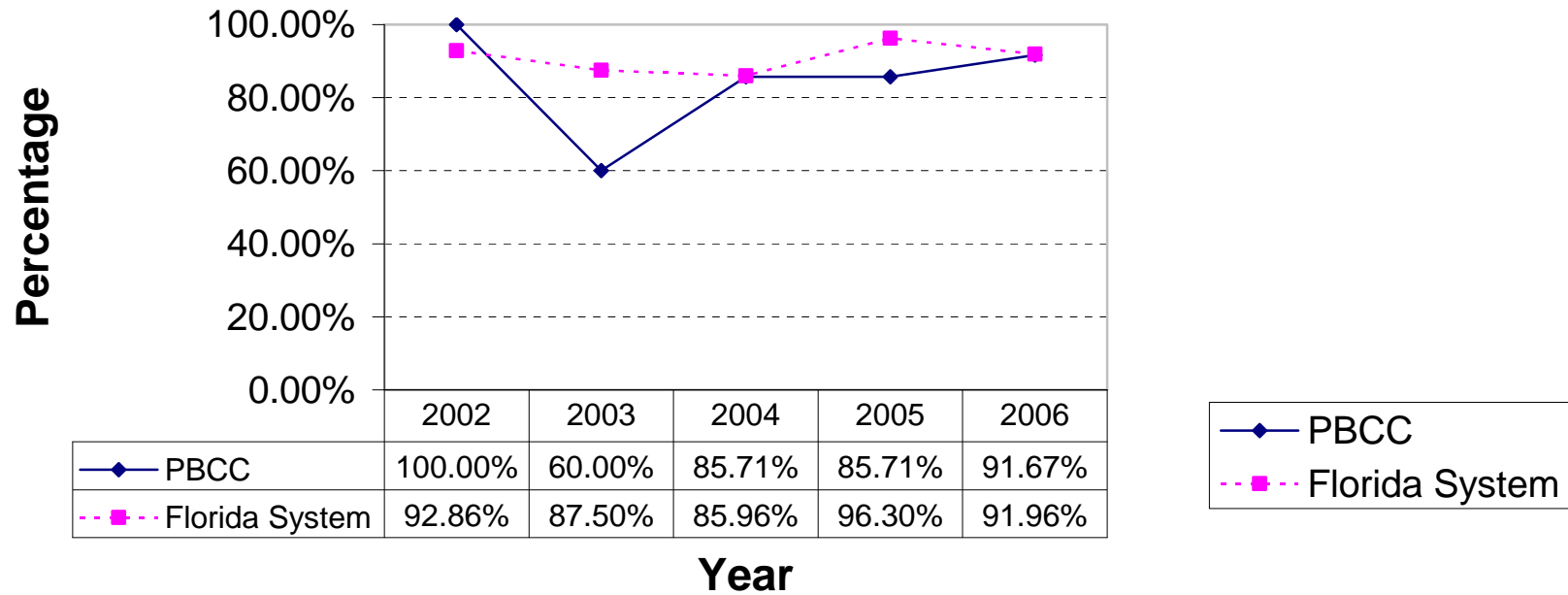
**Figure 20**  
**Accountability Outcome Measure 4 Part 2**  
**Comparison of College Preparatory Success Rate Report**  
**for Associate in Science Students**  
**between PBCC and Florida System**  
**Total Students (2002-2006)**



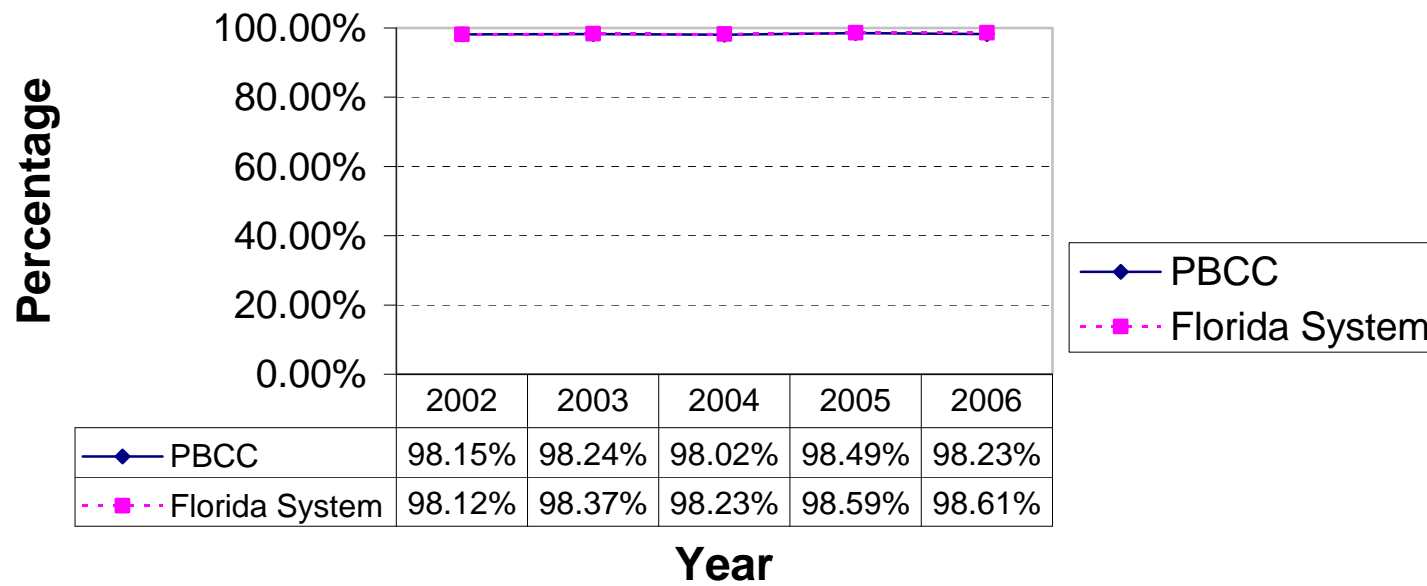
**Figure 21**  
**Accountability Outcome Measure 4 Part 2**  
**Comparison of College Preparatory Retention Rate Report for**  
**Postsecondary Vocational Certificate Students**  
**between PBCC and Florida System**  
**Total Students (2002-2006)**



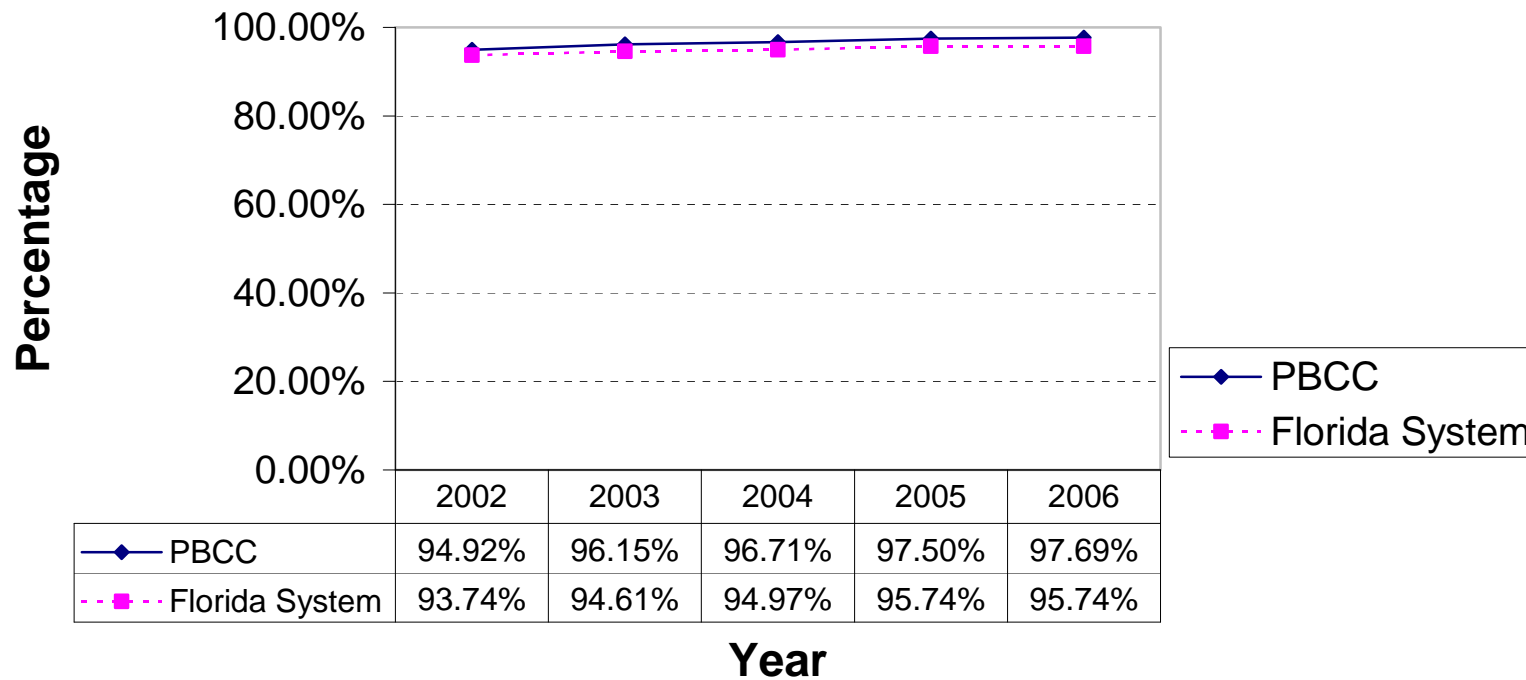
**Figure 22**  
**Accountability Outcome Measure 4 Part 2**  
**Comparison of College Preparatory Success Rate Report**  
**for Postsecondary Vocational Certificate Students**  
**between PBCC and Florida System**  
**Total Students (2002-2006)**



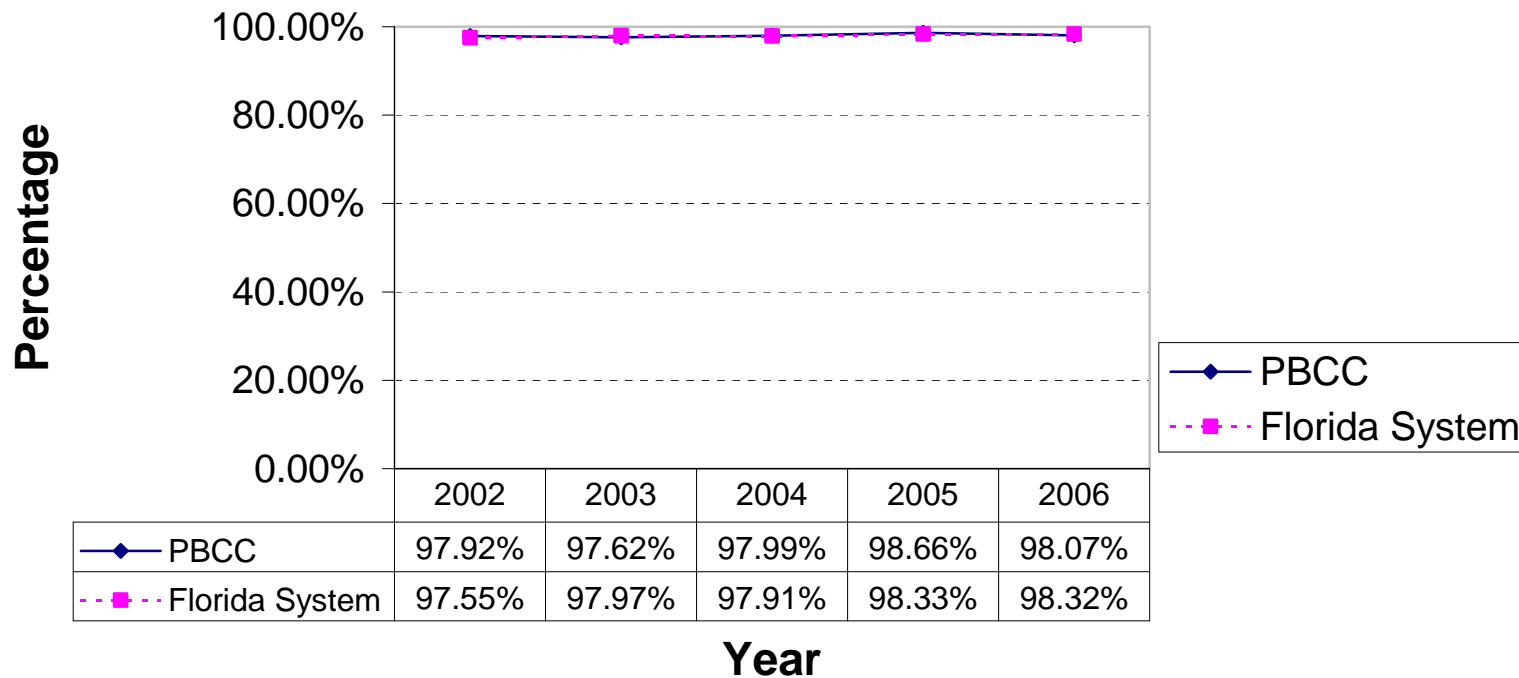
**Figure 23**  
**Accountability Outcome Measure 5**  
**Comparison of CLAST Performance Report For Essay Subtest**  
**between PBCC and Florida System**  
**Total Students Who Attempted the CLAST or Had a CLAST Alternative**  
**(2002-2006)**



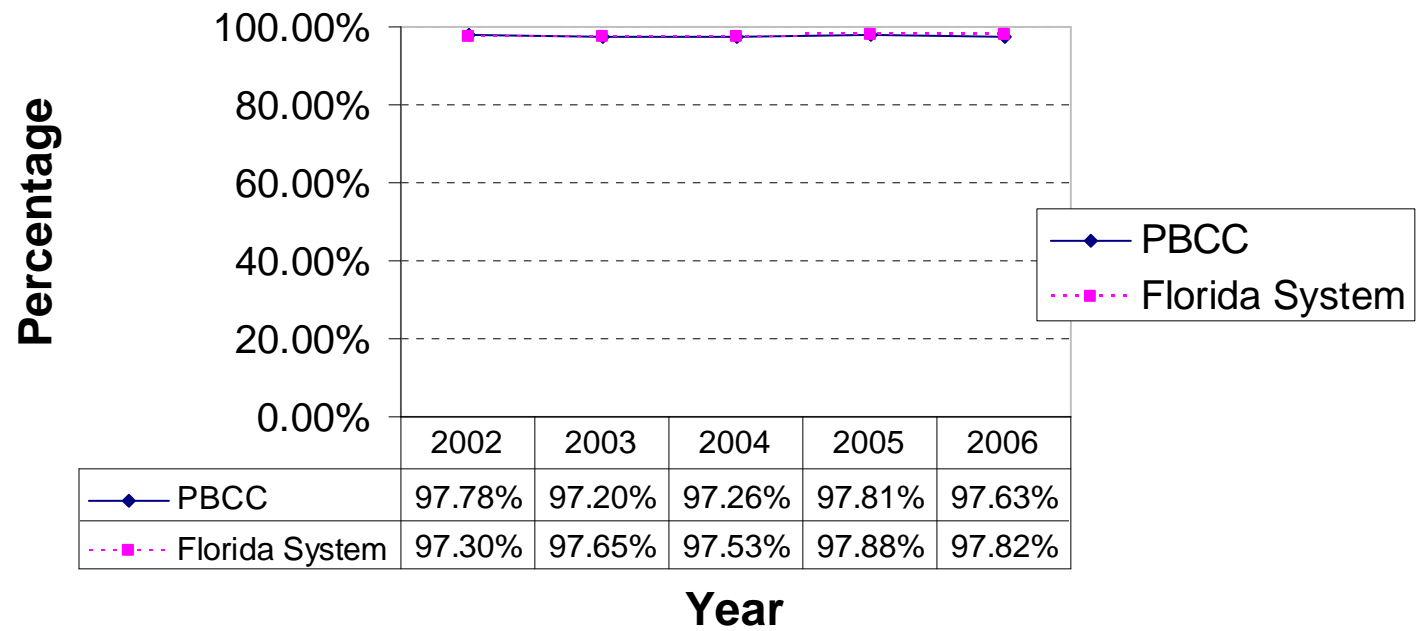
**Figure 24**  
**Accountability Outcome Measure 5**  
**Comparison of CLAST Performance Report For Mathematics Subtest**  
**between PBCC and Florida System**  
**Total Students Who Attempted the CLAST or Had a CLAST Alternative**  
**(2002-2006)**



**Figure 25**  
**Accountability Outcome Measure 5**  
**Comparison of CLAST Performance Report For Reading Subtest**  
**between PBCC and Florida System**  
**Total Students Who Attempted the CLAST or Had a CLAST Alternative**  
**(2002-2006)**



**Figure 26**  
**Accountability Outcome Measure 5**  
**Comparison of CLAST Performance Report For English Subtest**  
**between PBCC and Florida System**  
**Total Students Who Attempted the CLAST or Had a CLAST Alternative**  
**(2002-2006)**



**Figure 27**  
**Accountability Outcome Measure 5**  
**Comparison of CLAST Performance Report For All Subtests**  
**between PBCC and Florida System**  
**Total Students Who Attempted the CLAST or Had a CLAST Alternative**  
**(2002-2006)**

